

Wehr Nature Center

Nature Mapping year round



	Records	Species
Birds	459	97
Mammals	74	15
Turtles	8	4
Frogs	14	4
Snakes	1	1



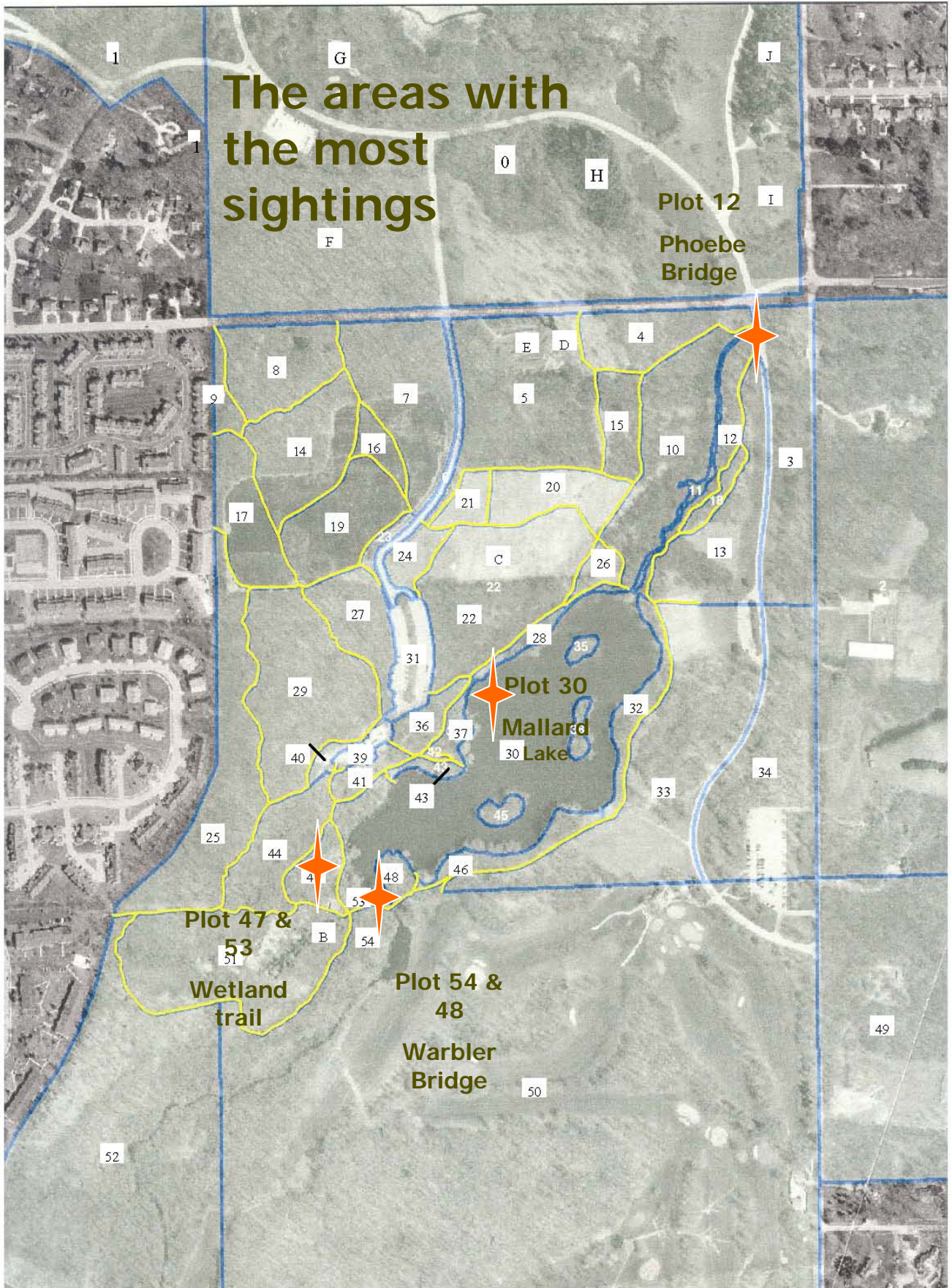
The nature mapping program at Wehr nature center is to document and make convenient analysis of the observations that are being recorded through a weekly phenology group. By developing standard blocks along the paths and coding each block to the dominant habitat type, we are able to utilize a variety of volunteers to observe and enter the data.

This makes the data user-friendly while maintaining trail rules, such as no walking off trail, in this high traffic natural landscape.

Habitat Codes were created for 63 areas

		Habitat	Latitude	Longitude
3	3 Park Dr. Woods	UOO	42.928173/	-88.029365
4	4 college	SUN	42.930174/	-88.030154
5	5 forest edge	SUN	42.929698/	-88.032638
6	6 Wehr Drive	UOO		
7	7 mixed savanah	FUH	42.929661/	-88.035352
8	8 College Woods	FUH	42.928271/	-88.037009
9	9 College Woods edge	SUN	42.929644/	-88.037205
10	10 shrubland	SLN	42.928467/	-88.031423
11	11 trail spur	OLWr	42.928405/	-88.030580
12	12 trail	SLN	42.929188/	-88.030256
13	13 waterfall	UOO	42.926942/	-88.031158
15	15 Junk Prairie	SLMn	42.929056/	-88.031815
16	16 Savanah triangle	OUN		
17	17 Savanah end	OUN		
18	18 trail	SLN	42.928218/	-88.030392
19	19 Savanah proper	OUN	42.928271/	-88.037009

Wisconsin Nature Map -Wehr Nature Center



The areas with the most sightings

Plot 12
Phoebe Bridge

Plot 30
Mallard Lake

Plot 47 & 53
Wetland trail

Plot 54 & 48
Warbler Bridge