

Photo by D. Berganza; Wikimedia Commons

Project Nighthawk

Noel Cutright and William Mueller

The Western Great Lakes Bird and Bat Observatory

Belgium, WI – WGLBBO Online at: wglbbo.org



Photo by M. Manske; Wikimedia Commons

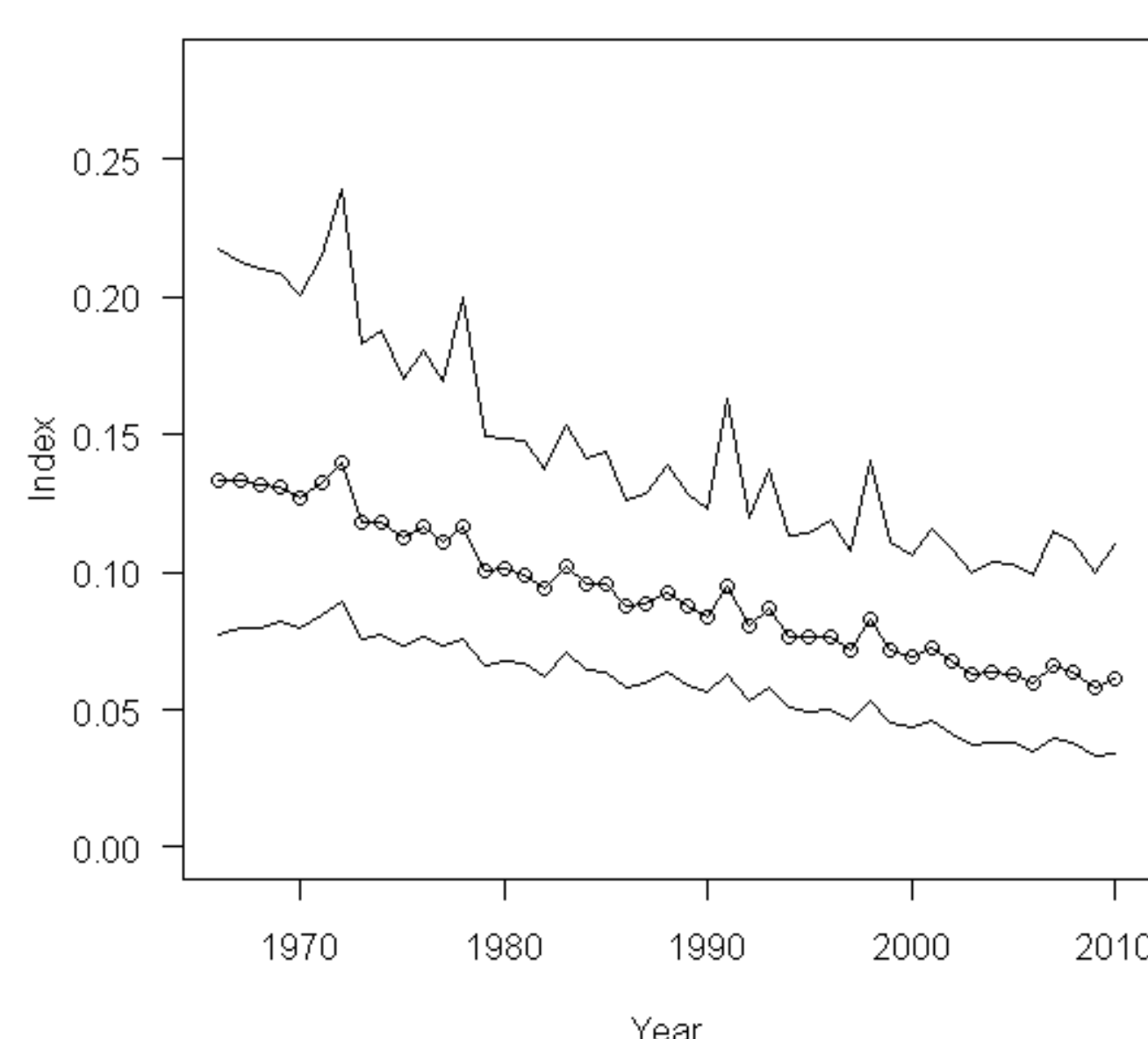
Abstract

The Common Nighthawk (*Chordeiles minor*) is a cryptic, nocturnal, aerial insectivore whose populations, behaviors, and habitat needs are relatively poorly known (R. Brady 2009 Wisconsin Nightjar Survey). The Common Nighthawk (CONI) was recently (June 1, 2011) added to the Wisconsin Natural Heritage Working List with a state rank of S2S3B (http://dnr.wi.gov/org/land/er/wlist/06_2011_Working_List.pdf). This project seeks to determine abundance of CONI within Wisconsin's borders, and lead to enhanced methods for a more robust, long-term monitoring protocol.

Introduction

CONI is thought to be declining based on anecdotal accounts and limited survey information. For example, the North American Breeding Bird Survey (BBS) inadequately monitors the species because of its crepuscular habits; BBS results for Wisconsin (<http://www.mbr-pwrc.usgs.gov/cgi-bin/atlas10.pl?04200&1&10>) indicate a 1.7% annual decline long-term (1966-2010) and 1.4% short-term (2000-2010). The Wisconsin Checklist Project data also show a slow but steady, significant decrease from the early 1980s through 2012 (R. Rolley. 2012 Wisconsin Checklist Project).

CONI is widely distributed in Wisconsin and inhabits both native habitats and those more closely associated with humans. CONI was Confirmed in 3% and Probable in 9% of 1,132 quads during the six years of field work during the Wisconsin Breeding Bird Atlas (Atlas) project, with approximately half of the probable and confirmed breeding records from priority blocks from urban, rural residential, or agricultural habitats (N. J. Cutright et al. 2006 WSO). In urban settings, CONI uses flat rooftops for nesting and the vast airspaces above for foraging. The remaining Atlas records were from native habitats.



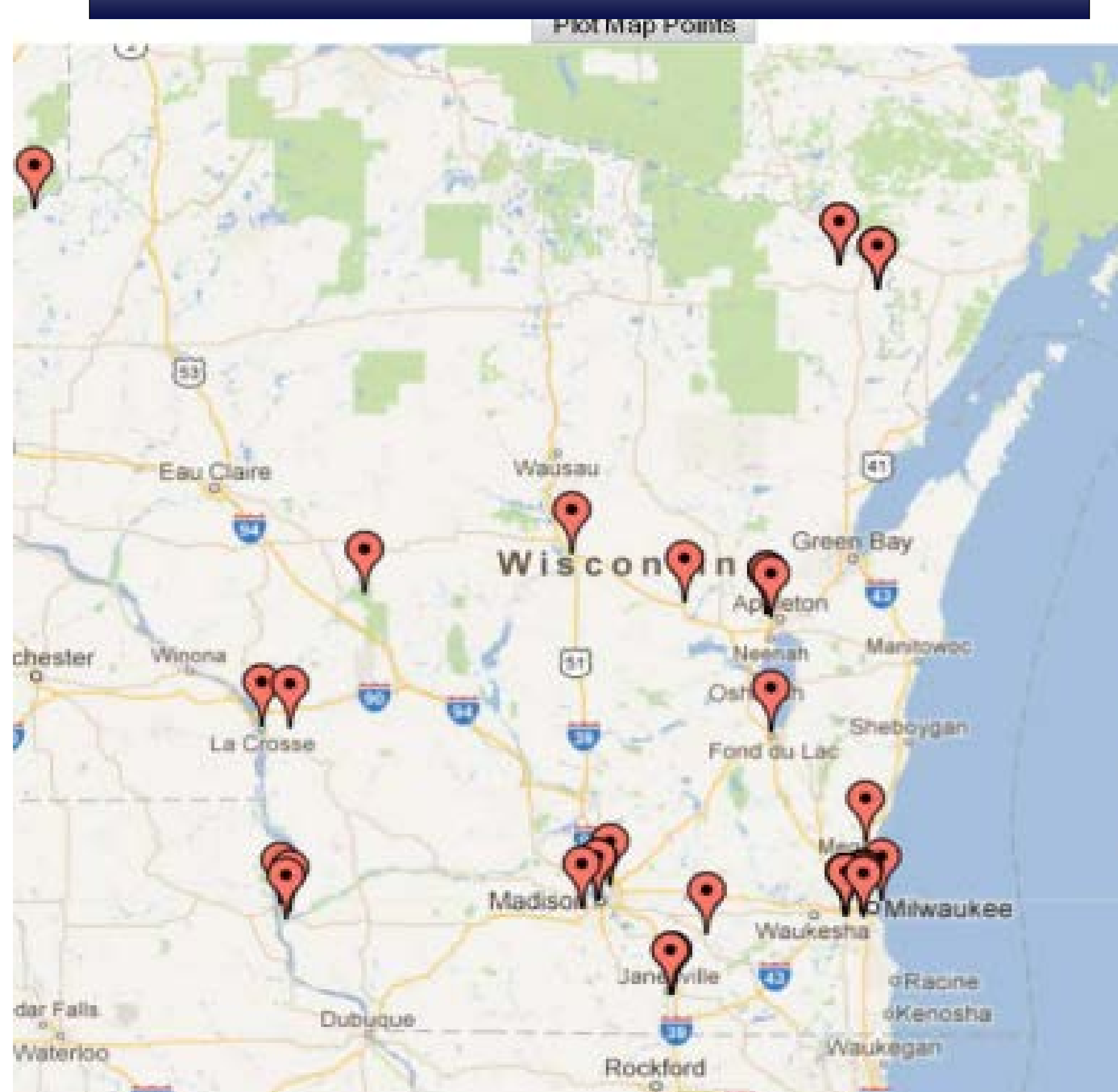
Common Nighthawk
WI BBS results 1966-2010
USGS Breeding Bird Survey

Methods

During the summer 2012 breeding season, we asked cooperators to submit records of Common Nighthawk observations from anywhere in Wisconsin. See a map below detailing the statewide distribution of records. Not all volunteer observer records have been received as of 9-21-2012. Data submitted through WI eBird as well as via other methods of electronic submission was accepted.

Project Nighthawk is ongoing. A Geographic Information System spatial analysis of all observation records from 2012 will be mapped using satellite derived landcover layers for WI, with a focus on the concentration of records within urban areas.

Results



Results

Table 1: 2012 Summer Observations

number of indiv	location name	coordinates	county	date in 2012	observer(s)
1	Staffon Rd. & Kirck Rd.	44.358899, -90.670681	Jackson	6/12/12	Doug Stratton
2	Appleton	44.281586, -88.49899	Outagamie	6/22/12	Karen Straub
1	Greenfield Park	43.005226, -88.06185	Milwaukee	6/2/12	Sarah Stokes
3	Staffon Rd. & Kirck Rd.	44.358899, -90.670681	Jackson	6/2/12	Scott Puchalski
1	Kettle Moraine State Forest ; Young Rd.	42.8403529, -88.5954666	Walworth	6/2/12	Quentin Yoergler
2	Aldenwood	44.085222, -90.658158	Monroe	6/2/12	Ben Carlson
1	Boscobel	43.133796, -90.7043254	Grant	6/5/12	Paul Schrike
2	Sun Prairie	43.1897727, -89.1925465	Dane	6/5/12	Ted Keyel
1	Belden Marshbird PSU	46.3825179, -92.1650006	Douglas	6/6/12	Ryan Brady
1	Greenfield Park	43.005226, -88.06185	Milwaukee	6/6/12	Sarah Stokes
1	Staffon Rd. & Kirck Rd.	44.358899, -90.670681	Jackson	6/6/12	Andy Paulios
x	Sarocka Park - Rittmiller	45.6391725, -89.405601	Oneida	6/7/12	Vanessa Haese-Lehman
1	S 45 St near Scott St	43.017796, -87.96987	Milwaukee	6/7/12	Bill Mueller
2	near Pembine	45.631084, -87.88977	Marinette	6/9/12	Jack Swelstad
1	Marshfield, Circle Dr.	44.67998, -90.16333	Wood	6/12/12	Andy Paulios, Tom Prestby
1	Solon Springs	46.3562966, -91.8129578	Douglas	6/12/12	Paul Hayes
1	Kohler	43.7451499, -87.7729082	Sheboygan	6/13/12	Davor Gircic
2	Greenfield Park	43.005226, -88.06185	Milwaukee	6/18/12	Sarah Stokes
2	Fox River Mall	44.289872, -88.4706654	Winnebago	6/18/12	Paul Bruce
1	near Pembine	45.631084, -87.88977	Marinette	6/20/12	Jack Swelstad
1	Union TWP BBS	45.96023, -92.497894	Burnett	6/22/12	Andy Paulios
2	Elver Park	43.038258, -89.50375	Dane	6/22/12	Kyle Lindemer
1	Vyalusing State Park	42.99104, -91.11997	Grant	6/22/12	Cynthia Bridge
2	Greenfield Park	43.005226, -88.06185	Milwaukee	6/24/12	Sarah Stokes
3	Dawson Field	42.689544, -89.01324	Rock	6/25/12	Joshua Cullum
2	Greenfield Park	43.005226, -88.06185	Milwaukee	6/25/12	Sarah Stokes
3	Bark River Nature Park	42.922806, -88.82721	Jefferson	6/26/12	Cynthia Bridge
2	Greenfield Park	43.005226, -88.06185	Milwaukee	6/26/12	Sarah Stokes
1	Jackson Park	42.994415, -87.964096	Milwaukee	6/26/12	Bill Mueller
1	LaCrosse	43.808639, -91.25345	LaCrosse	6/26/12	Mary Strasser
2	Kirch, Bartos, and Staffon Rds	44.364899, -90.690255	Jackson	6/26/12	Rob Pendergast
1	Greenfield Park	43.005226, -88.06185	Milwaukee	6/27/12	Sarah Stokes
1	La Riviere Park	43.023681, -91.102875	Crawford	6/28/12	Dennis Kirschbaum
7	Cemetery Road	44.36838, -90.687294	Jackson	6/29/12	Scott Meyer
x	Weyauwega	44.328815, -88.950516	Waupaca	6/29/12	Chuck Patters
2	Grafton	43.317523, -	Ozaukee	June - July	Jeff Baughman
1	Bukott Park	44.5304982, -89.5061232	Portage	7/1/12	Joe Schaufentuel
2	Appleton	44.281586, -88.49899	Outagamie	7/2/12	Karen Straub
1	Vyalusing State Park	42.99104, -91.11997	Grant	7/2/12	Cynthia Bridge
14	Grant Park	42.9114153, -87.8416871	Milwaukee	7/2/12	David Flores
10	Lake Park	43.070658, -87.868139	Milwaukee	7/2/12	Thora Vervoren
1	Fond du Lac, Forest Mall	43.78546, -88.47721	Fond du Lac	7/3/12	Alia Dufee, Sam Kierowicz
1	near Pembine	45.631084, -87.88977	Marinette	7/6/12	Jack Swelstad
1	Greenfield Park	43.005226, -88.06185	Milwaukee	7/8/12	Sarah Stokes
1	Dawson Field	42.689544, -89.01324	Rock	7/9/12	Joshua Cullum
1	Monterey Park	42.66935, -89.02645	Rock	7/9/12	Joshua Cullum
1	Schmeekle Reserve	44.535675, -89.581066	Portage	7/10/12	Elizabeth Riley
1	Wiegels	43.80059, -91.0361	LaCrosse	7/13/12	Cary Wiegels
2	Appleton	44.281586, -88.49899	Outagamie	7/14/12	Karen Straub
1	Villa Louis	43.056008, -91.157539	Crawford	7/14/12	Dennis Kirschbaum
1	Bear Bottoms	45.727203, -88.09722	Florence	7/15/12	Bob and Kay Kavanagh
1	S 45 St near Scott St	43.017796, -87.96987	Milwaukee	7/17/12	Bill Mueller
1	Bear Bottoms	45.727203, -88.09722	Florence	7/20/12	Bob and Kay Kavanagh
2	Dane Co Regional Airport	43.131653, -89.346596	Dane	7/20/12	Kyle Lindemer
3	West Milwaukee Park	43.011047, -87.97521	Milwaukee	7/20/12	Tim Hahn
1	Madison	43.06972, -89.42265	Dane	7/22/12	Kyle Lindemer
1	Delta Lake Cabin	46.4788716, -91.2969357	Bayfield	7/26/12	Richard Ouren
2	BRSF	44.361744, -90.69045	Jackson	7/28/12	Dave & Margaret Brasser
2	Horicon Marsh	43.5555151, -88.6301422	Dodge	7/28/12	Richard Norton
1	Appleton	44.281586, -88.49899	Outagamie	7/28/12	Karen Straub

References

Brady, R. 2009. Wisconsin nightjar survey – overview. [Online: Accessed 9-14-12]. <http://wiatri.net/projects/birdroutes/nightjars.htm>

Cutright, N. J., B. R. Harriman, and R. W. Howe. 2006. Atlas of the breeding birds of Wisconsin. Wisconsin Society for Ornithology, Inc. Waukesha, WI.

Rolley, R. 2012. The Wisconsin Checklist Project 1982-2010. Passenger Pigeon 74(1): 9-25.

Sauer, J. R., J. E. Hines, J. E. Fallon, K. L. Pardieck, D. J. Ziolkowski, Jr., and W. A. Link. 2011. *The North American Breeding Bird Survey, Results and Analysis 1966 - 2010. Version 12.07.2011 USGS Patuxent Wildlife Research Center, Laurel, MD*

Acknowledgements

We would like to acknowledge the many citizen observers who provided observation data for Project Nighthawk during the summer of 2012.

WI Breeding Bird Atlas map for CONI – 1995-2001

