

Acoustic Bat Encounters

Survey Route

SPECIES/GROUP

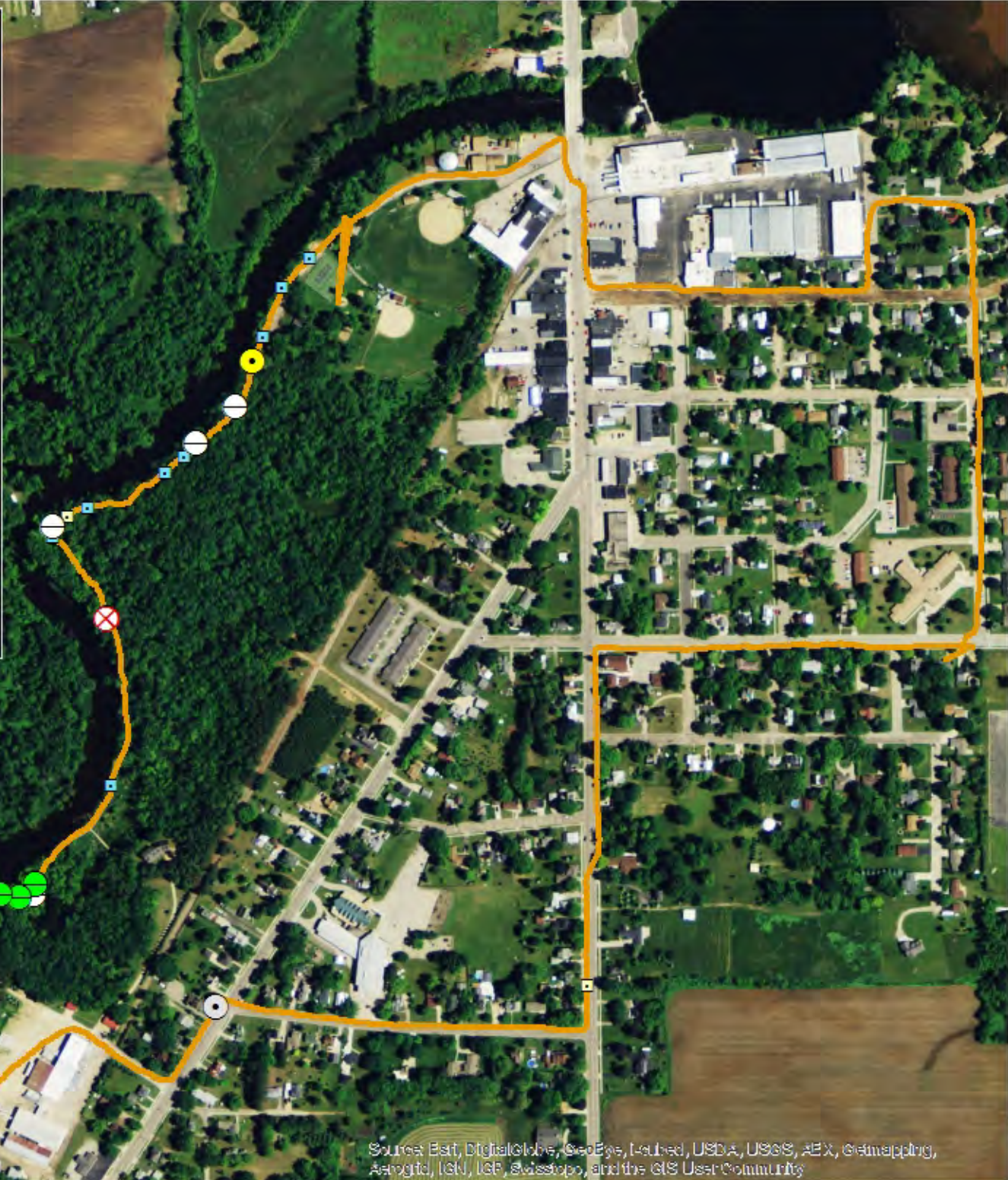
High Frequency ≥ 35 kHz

- Little Brown/
Northern Long-eared
- Little Brown
- Northern Long-eared
- ⊗ Eastern Red/ Pipistrelle
- Eastern Red
- ⊕ Eastern Pipistrelle

Low Frequency ≤ 35 kHz

- Hoary
- Big Brown/ Silver-haired
- Big Brown
- Silver-haired





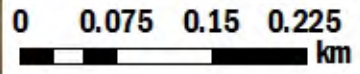
SURVEY RESULTS

Waupaca County
 Manawa-Little Wolf River Trail
 16 May 2015
 RT 3159
 Surveyors: B Johnston
 Route Length: 4.75 km
 3 Species Encountered

Time & Weather

Time (PM)	
8:47	9:48
Temperature (F)	
69.0	67.0
Relative Humidity (%)	
76.0	79.0
Wind (m/s)	
4.5	2.2

Notes:



Source: Esri, DigitalGlobe, GeoEye, Earthstar, USDA, USGS, AeroGRID, IGN, IGP, Swisstopo, and the GIS User Community