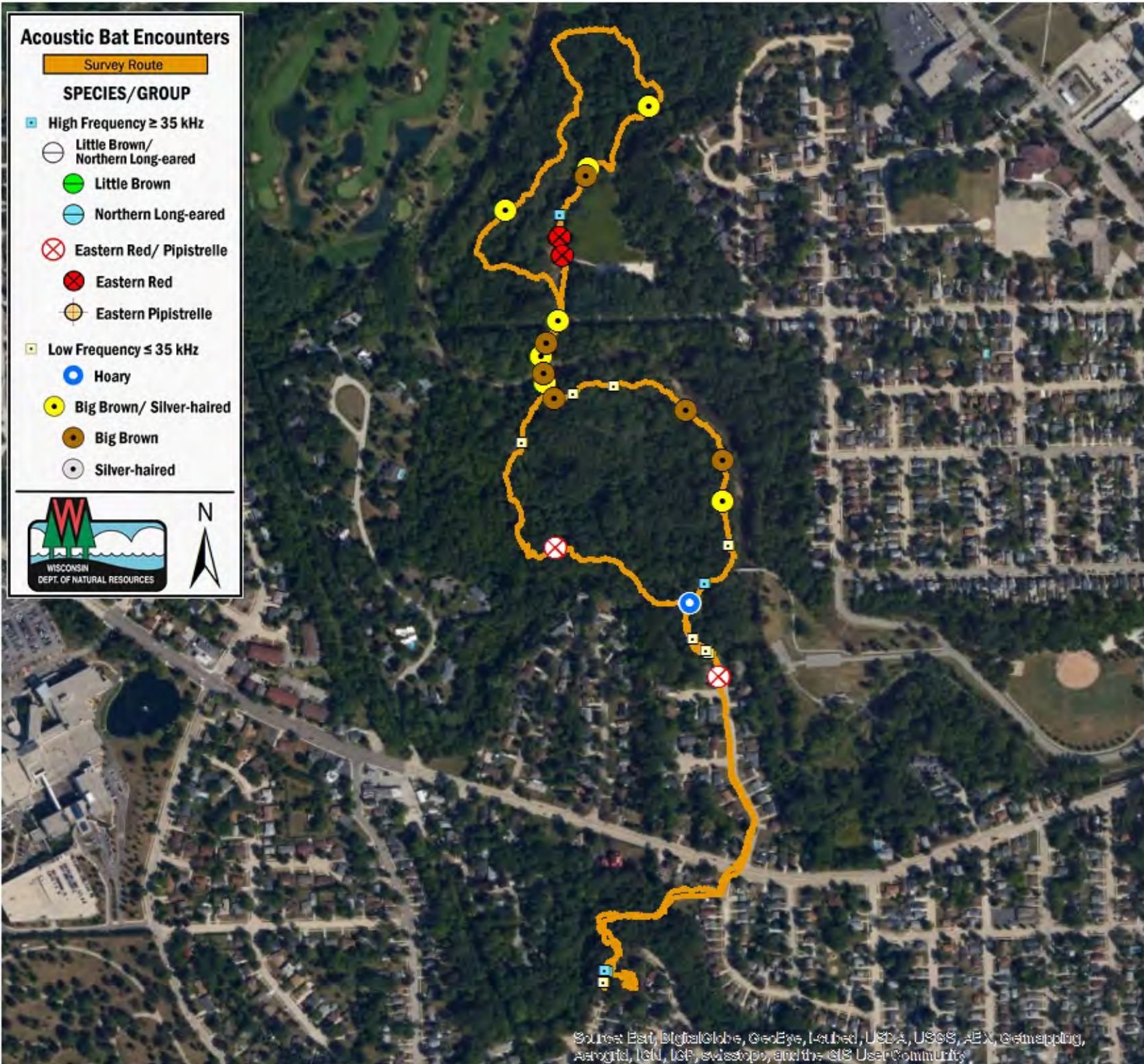


## Acoustic Bat Encounters

Survey Route

### SPECIES/GROUP

- High Frequency  $\geq 35$  kHz
- Little Brown/  
Northern Long-eared
- Little Brown
- Northern Long-eared
- ⊗ Eastern Red/ Pipistrelle
- Eastern Red
- Eastern Pipistrelle
- Low Frequency  $\leq 35$  kHz
- Hoary
- Big Brown/ Silver-haired
- Big Brown
- Silver-haired



## SURVEY RESULTS

Racine County  
 Colonial Park  
 18 May 2015  
 RT 3161  
 Surveyors: J Hanisko  
 Route Length: 4.62 km  
 3 Species Encountered

### Time & Weather

Time (PM)	
8:43	10:04
Temperature (F)	
56.0	53.0
Relative Humidity (%)	
53.0	57.0
Wind (m/s)	
5.8	4.5

Notes:



Source: Esri, DigitalGlobe, GeoEye, Earthstar, USDA, USGS, AeroGRID, IGN, SCS, Swisstopo, and the GIS User Community

