



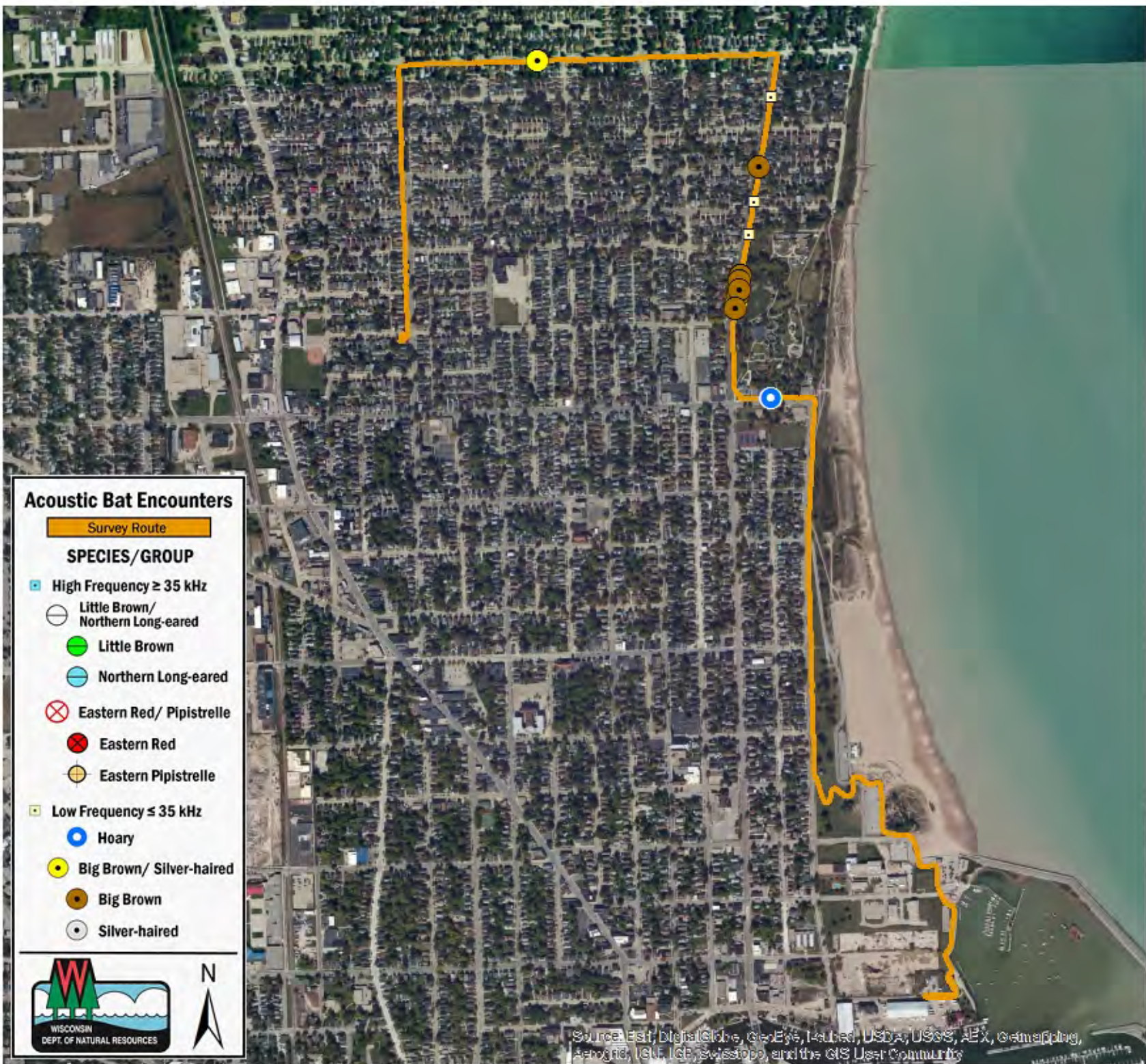
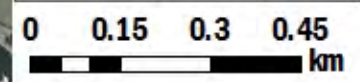
SURVEY RESULTS

Racine County
Lake Front
22 May 2015
RT 3163
 Surveyors: S Mason
 Route Length: 4.89 km
 2 Species Encountered

Time & Weather

Time (PM)	
8:41	9:45
Temperature (F)	
48.0	50.0
Relative Humidity (%)	
50.0	43.0
Wind (m/s)	
2.7	2.2

Notes:



Acoustic Bat Encounters

- Survey Route
- SPECIES/GROUP**
- High Frequency ≥ 35 kHz
 - Little Brown/
Northern Long-eared
 - Little Brown
 - Northern Long-eared
 - ⊗ Eastern Red/ Pipistrelle
 - Eastern Red
 - Eastern Pipistrelle
- Low Frequency ≤ 35 kHz
 - Hoary
 - Big Brown/ Silver-haired
 - Big Brown
 - Silver-haired



Source: Esri, DigitalGlobe, GeoEye, Earthstar, USDA, USGS, AeroGRID, IGN, GEBCO, Swisstopo, and the GIS User Community