

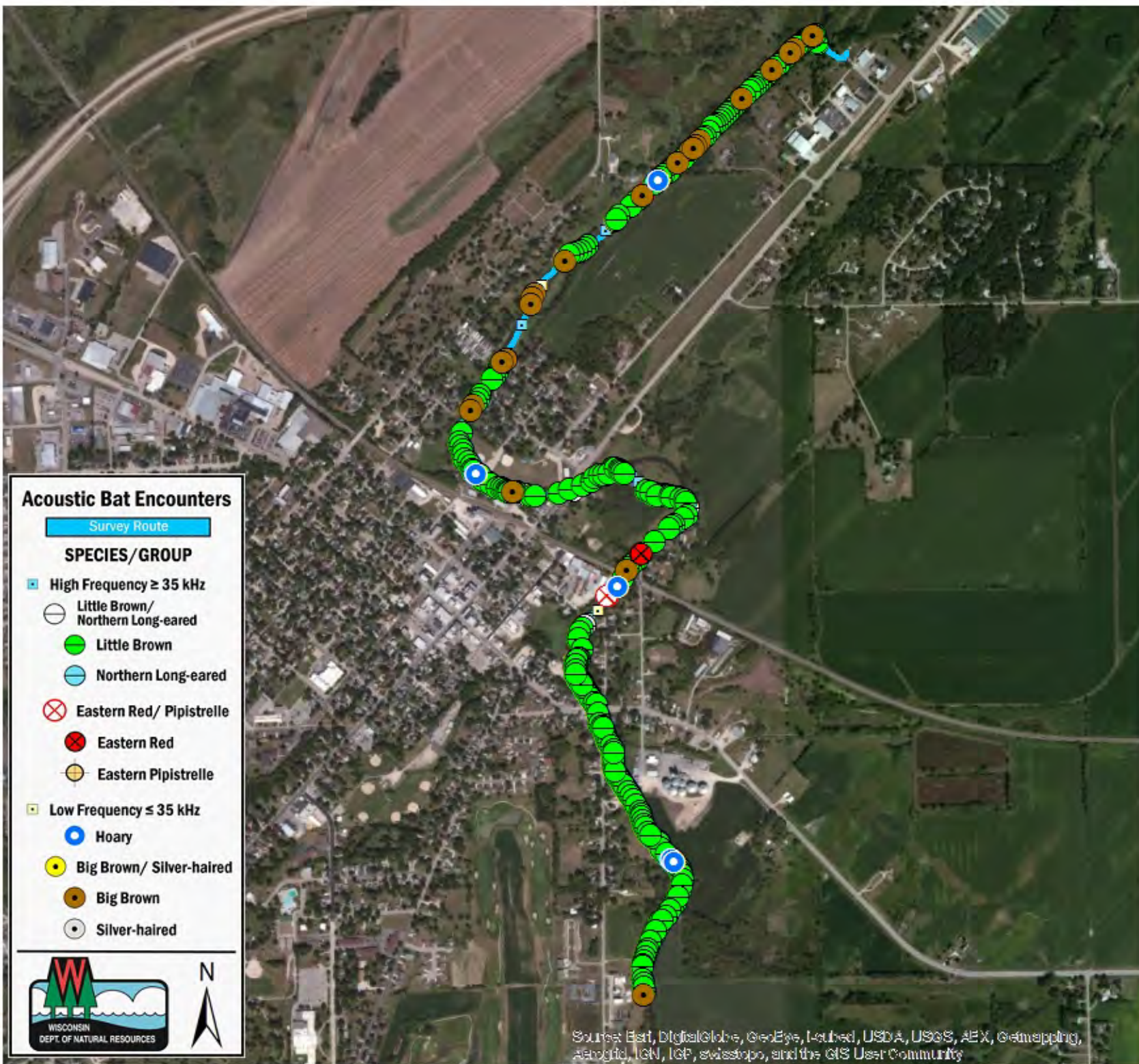
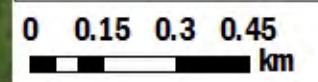


SURVEY RESULTS
 Columbia/Dodge County
 Crawfish River
 23 May 2015
 RT 3171
 Surveyors: S Chojnacki
 Route Length: 4.65 km
 4 Species Encountered

Time & Weather

Time (PM)	
8:58	10:40
Temperature (F)	
64.0	59.0
Relative Humidity (%)	
48.0	61.0
Wind (m/s)	
0.0	0.0

Notes: Columbus, WI



Acoustic Bat Encounters

Survey Route

SPECIES / GROUP

High Frequency ≥ 35 kHz

- Little Brown/ Northern Long-eared
- Little Brown
- Northern Long-eared
- Eastern Red/ Pipistrelle
- Eastern Red
- Eastern Pipistrelle

Low Frequency ≤ 35 kHz

- Hoary
- Big Brown/ Silver-haired
- Big Brown
- Silver-haired

Source: Esri, DigitalGlobe, GeoEye, Earthstar, USDA, USGS, AeroGRID, IGN, IGP, swisstopo, and the GIS User Community