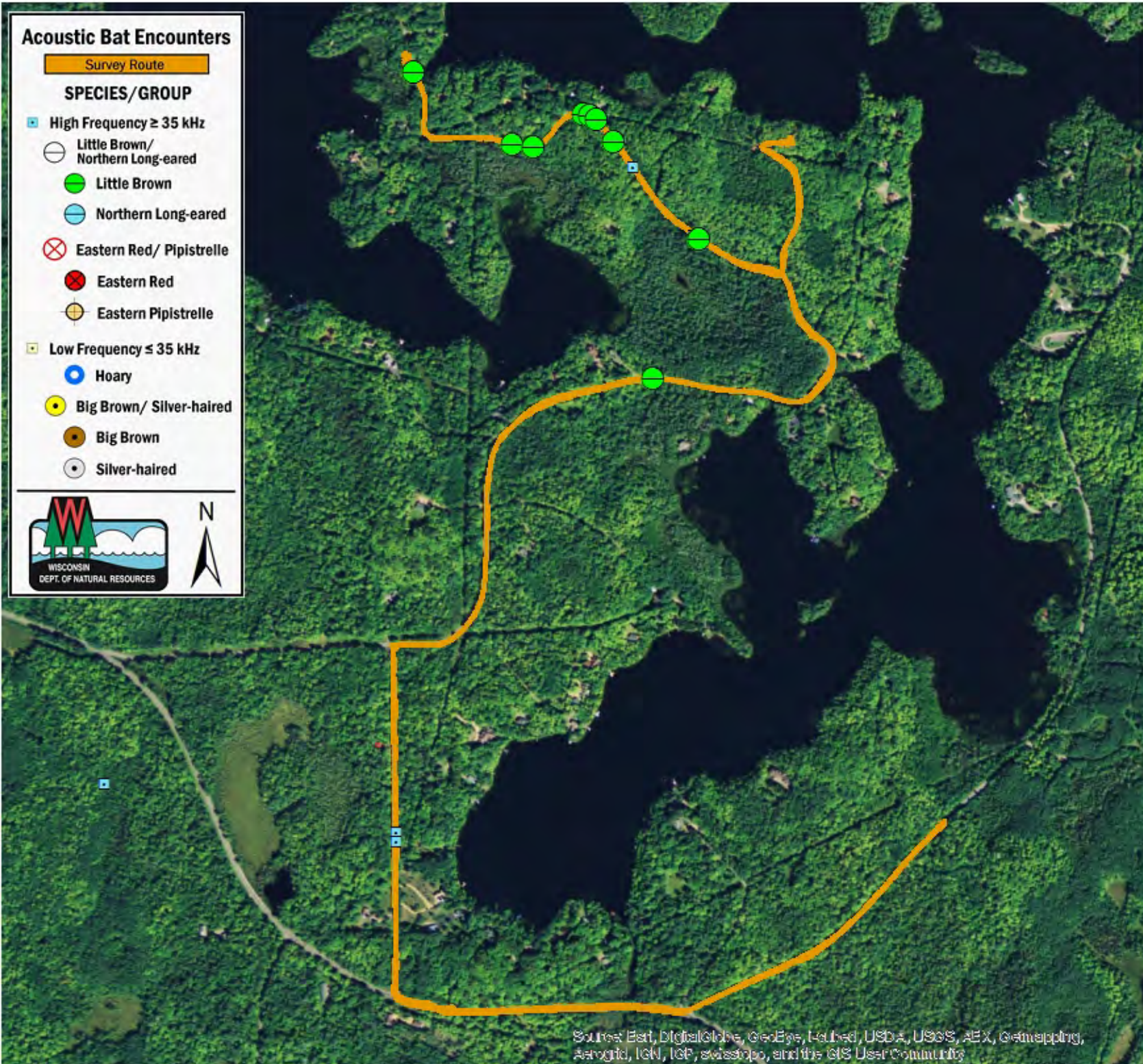


## Acoustic Bat Encounters

Survey Route

### SPECIES/GROUP

- High Frequency  $\geq 35$  kHz
  - Little Brown/  
Northern Long-eared
  - Little Brown
  - Northern Long-eared
  - Eastern Red/ Pipistrelle
  - Eastern Red
  - Eastern Pipistrelle
- Low Frequency  $\leq 35$  kHz
  - Hoary
  - Big Brown/ Silver-haired
  - Big Brown
  - Silver-haired



## SURVEY RESULTS

Vilas County  
 Bow Road  
 21 May 2015  
 RT 3178  
 Surveyors: S & B Schuppe  
 Route Length: 9.68 km  
 1 Species Encountered

### Time & Weather

Time (PM)	
9:00	10:00
Temperature (F)	
53.8	42.6
Relative Humidity (%)	
39.0	70.0
Wind (m/s)	
3.5	0.0

Notes: Presque Isle, WI



Source: Esri, DigitalGlobe, GeoEye, Earthstar, USDA, USGS, AeroGRID, IGN, IGP, swisstopo, and the GIS User Community

