

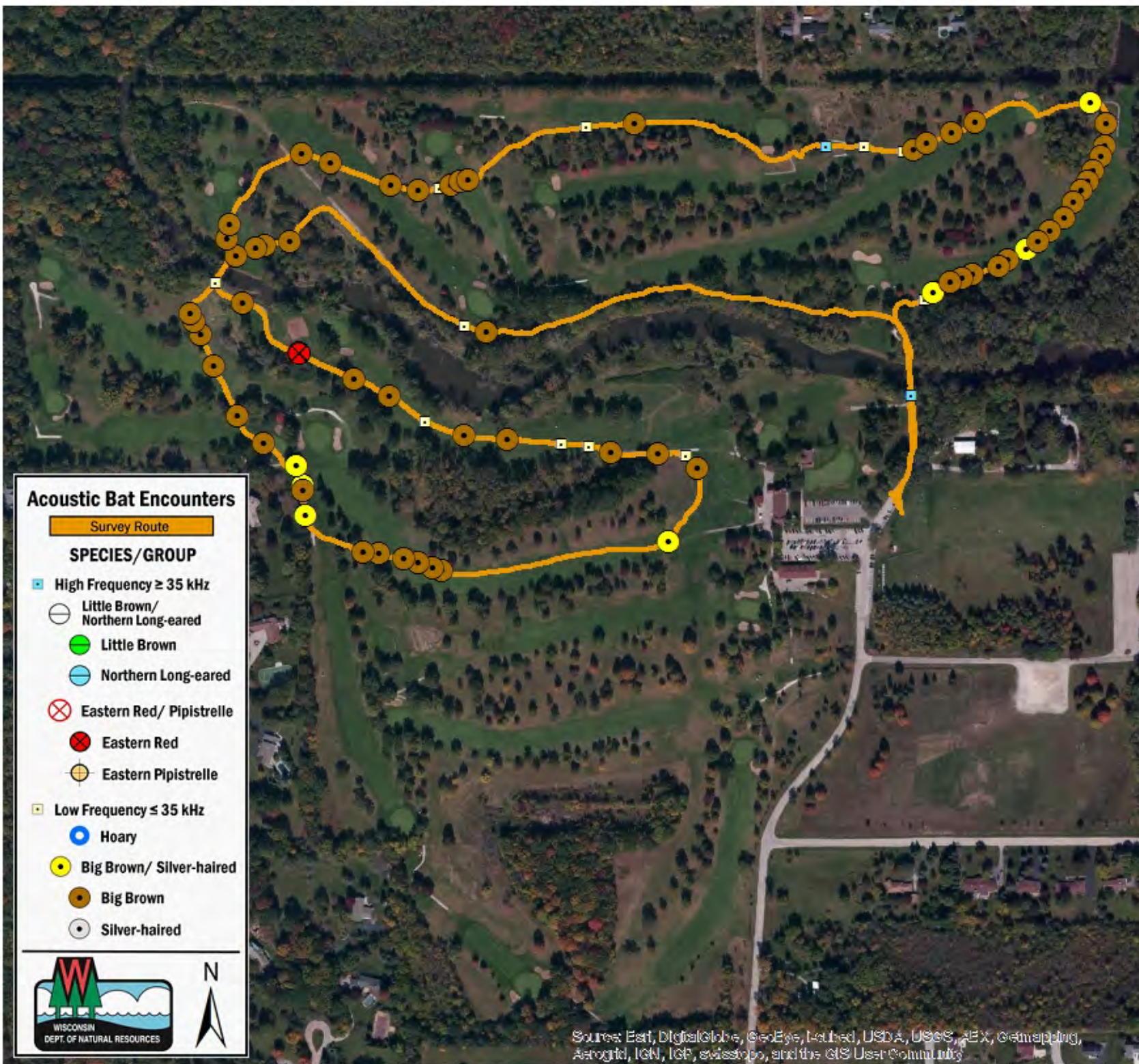
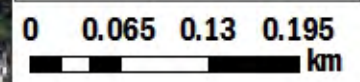


## SURVEY RESULTS

Racine County  
 Johnson Park Golf Course  
 10 June 2015  
 RT 3211  
 Surveyors: P Altenbach  
 Route Length: 4.26 km  
 2 Species Encountered

### Time & Weather

Time (PM)	
8:54	10:03
Temperature (F)	
62.0	61.0
Relative Humidity (%)	
78.0	81.0
Wind (m/s)	
2.2	2.2
Notes: Racine, WI	



**Acoustic Bat Encounters**

Survey Route

**SPECIES/GROUP**

- High Frequency  $\geq 35$  kHz
  - Little Brown/ Northern Long-eared
  - Little Brown
  - Northern Long-eared
- Eastern Red/ Pipistrelle
  - Eastern Red
  - Eastern Pipistrelle
- Low Frequency  $\leq 35$  kHz
  - Hoary
  - Big Brown/ Silver-haired
  - Big Brown
  - Silver-haired



Source: Esri, DigitalGlobe, GeoEye, Earthstar, USDA, USGS, AeroGRID, IGN, IGP, swisstopo, and the GIS User Community