



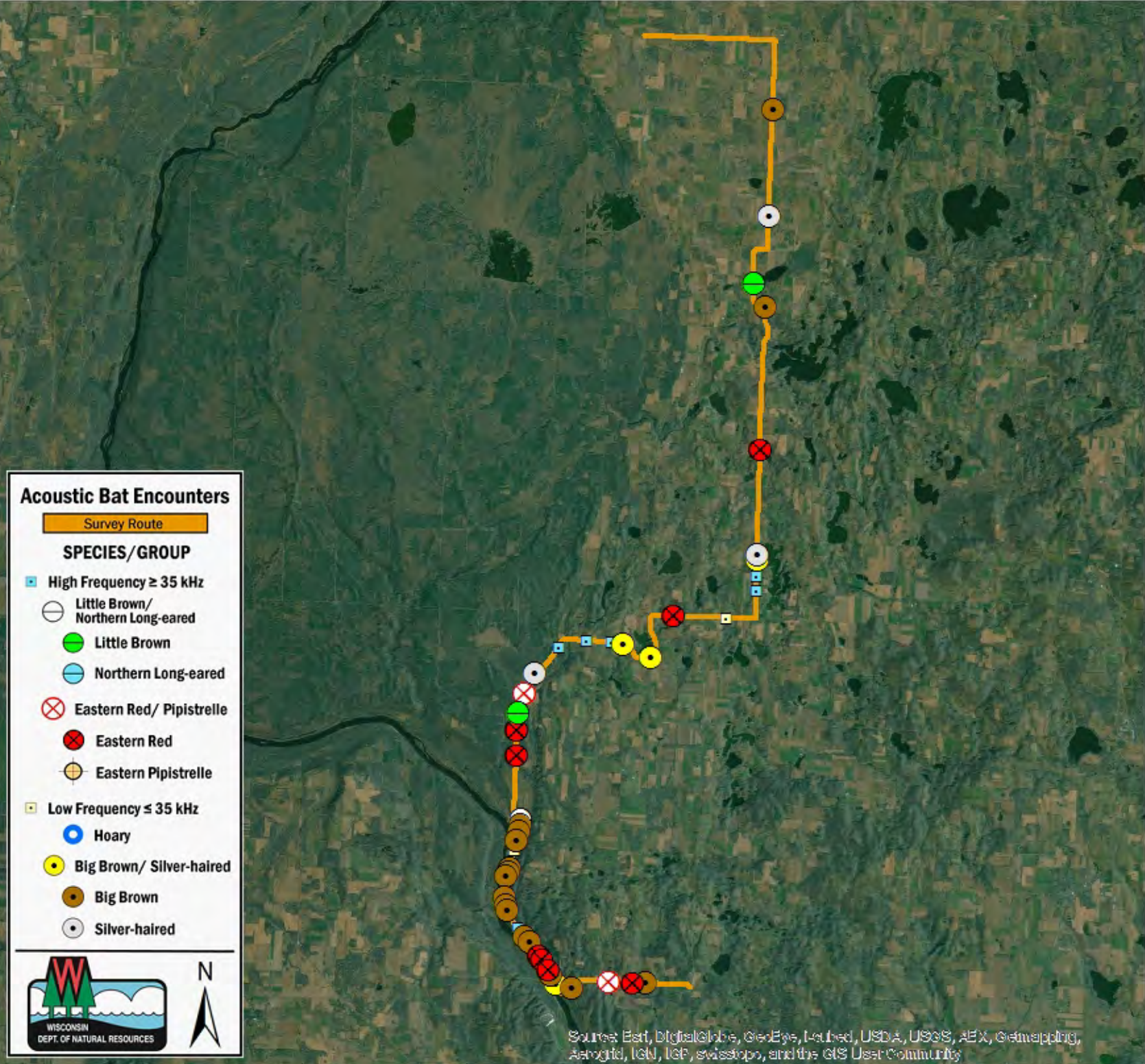
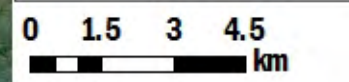
SURVEY RESULTS

Burnett/Polk County
 NWL 2 - Driving Rt
 11 June 2015
 RT 3214
 Surveyors: M Berg
 Route Length: 46.24 km
 4 Species Encountered

Time & Weather

Time (PM)	
9:45	11:17
Temperature (F)	
60.0	56.0
Relative Humidity (%)	
65.0	70.0
Wind (m/s)	
0.0	0.0

Notes: Survey completed N to S



Acoustic Bat Encounters

- Survey Route
- SPECIES/GROUP**
- High Frequency ≥ 35 kHz
 - Little Brown/
Northern Long-eared
 - Little Brown
 - Northern Long-eared
 - Eastern Red/ Pipistrelle
 - Eastern Red
 - Eastern Pipistrelle
- Low Frequency ≤ 35 kHz
 - Hoary
 - Big Brown/ Silver-haired
 - Big Brown
 - Silver-haired



Source: Esri, DigitalGlobe, GeoEye, Earthstar, USDA, USGS, AeroGRID, IGN, IGP, swisstopo, and the GIS User Community