



SURVEY RESULTS

Oneida/Vilas County

NH 1 - Driving Rt

12 June 2015

RT 3215

Surveyors: L Johnson & N Bentley

Route Length: 54.77 km

4 Species Encountered

Time & Weather

Time (PM)

9:21 11:32

Temperature (F)

67.0 60.0

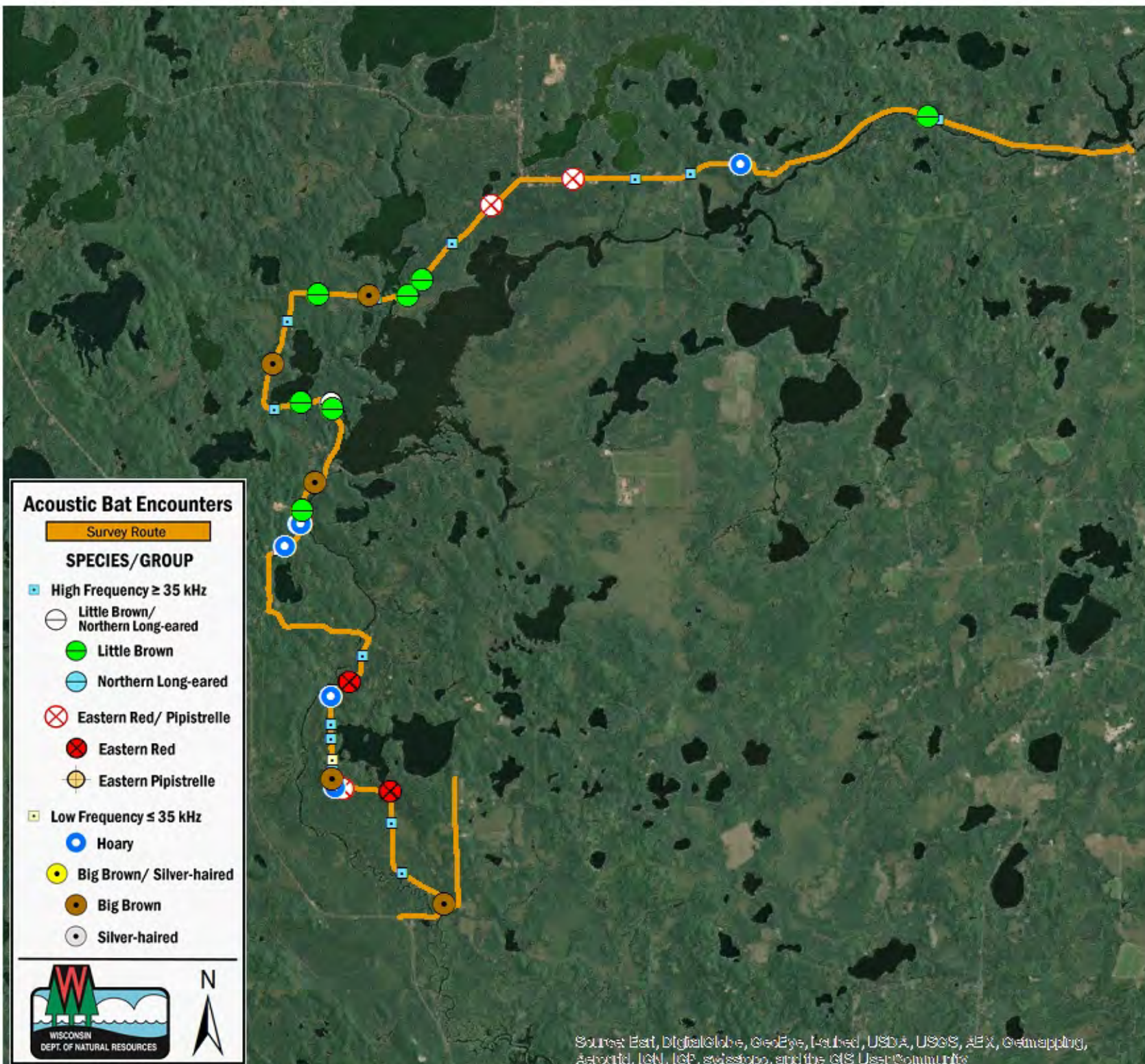
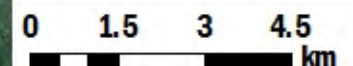
Relative Humidity (%)

55.0 58.0

Wind (m/s)

0.0 1.56

Notes: Survey completed SW to NE



Acoustic Bat Encounters

Survey Route

SPECIES/GROUP

- High Frequency ≥ 35 kHz
 - Little Brown/
Northern Long-eared
 - Little Brown
 - Northern Long-eared
 - ⊗ Eastern Red/ Pipistrelle
 - ⊗ Eastern Red
 - ⊗ Eastern Pipistrelle
- Low Frequency ≤ 35 kHz
 - Hoary
 - Big Brown/ Silver-haired
 - Big Brown
 - Silver-haired



Source: Esri, DigitalGlobe, GeoEye, Earthstar, USDA, USGS, AeroGRID, IGN, IGP, swisstopo, and the GIS User Community