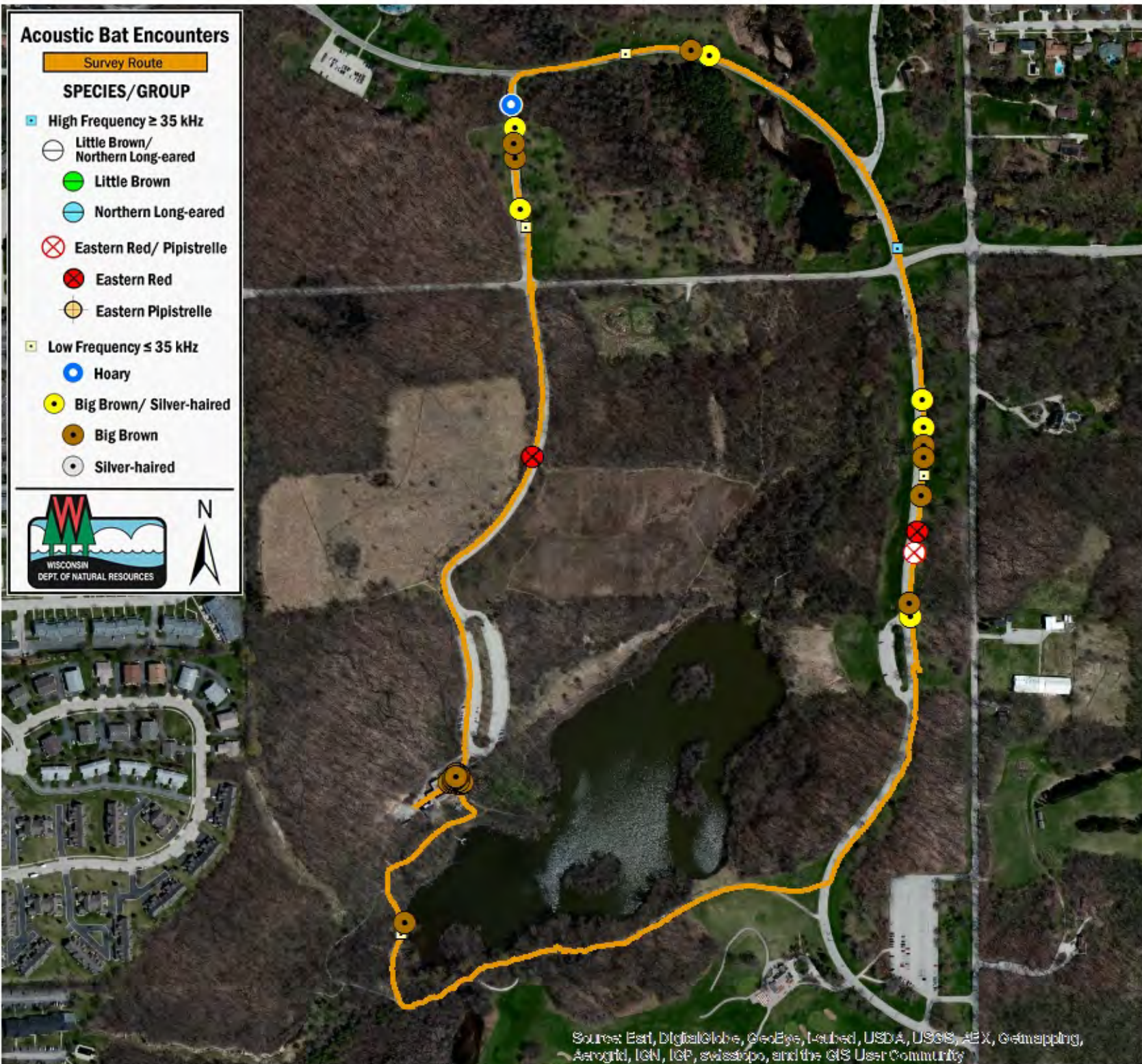


Acoustic Bat Encounters

Survey Route

SPECIES/GROUP

- High Frequency ≥ 35 kHz
 - Little Brown/
Northern Long-eared
 - Little Brown
 - Northern Long-eared
 - ⊗ Eastern Red/ Pipistrelle
 - Eastern Red
 - Eastern Pipistrelle
- Low Frequency ≤ 35 kHz
 - Hoary
 - Big Brown/ Silver-haired
 - Big Brown
 - Silver-haired



SURVEY RESULTS

Milwaukee County
Wehr Nature Center
12 June 2015
RT 3219

Surveyors: H April & Participants
Route Length: 3.43 km
3 Species Encountered

Time & Weather

Time (PM)

9:10 10:00

Temperature (F)

57.0 53.0

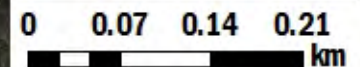
Relative Humidity (%)

83.0 83.0

Wind (m/s)

0.0 2.2

Notes: Whitnall Park



Source: Esri, DigitalGlobe, GeoEye, Earthstar, USDA, USGS, AeroGRID, IGN, IGP, swisstopo, and the GIS User Community