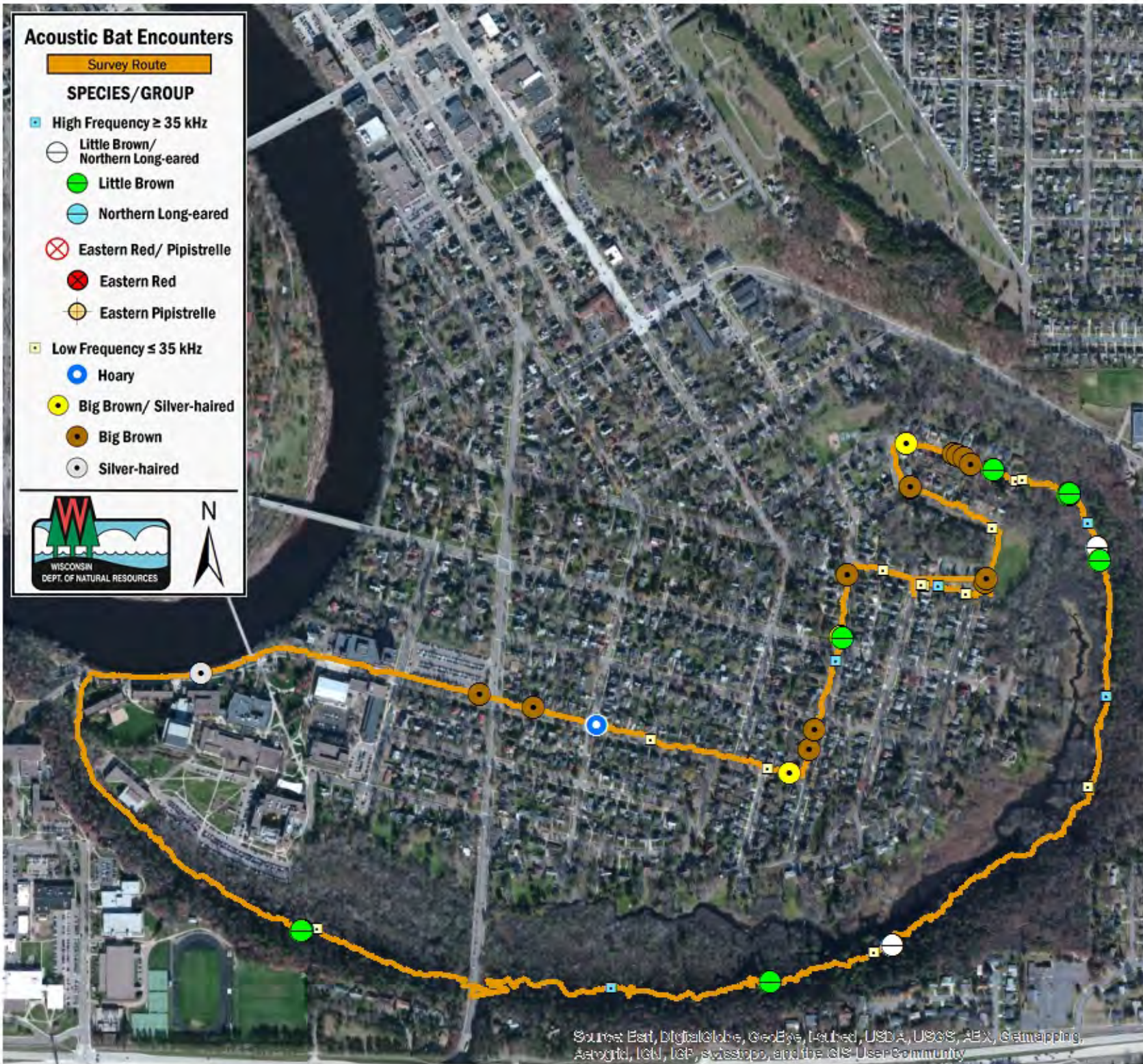


Acoustic Bat Encounters

Survey Route

SPECIES/GROUP

- High Frequency ≥ 35 kHz
- Little Brown/
Northern Long-eared
- Little Brown
- Northern Long-eared
- ⊗ Eastern Red/ Pipistrelle
- Eastern Red
- Eastern Pipistrelle
- Low Frequency ≤ 35 kHz
- Hoary
- Big Brown/ Silver-haired
- Big Brown
- Silver-haired



SURVEY RESULTS

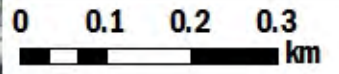
Eau Claire County
Putnam Park
8 June 2015
RT 3226

Surveyors: C Floyd & A DeVoe
Route Length: 7.25 km
4 Species Encountered

Time & Weather

Time (PM)	
9:26	10:45
Temperature (F)	
67.0	63.0
Relative Humidity (%)	
62.0	72.0
Wind (m/s)	
0.0	0.0

Notes:



Source: Esri, DigitalGlobe, GeoEye, Earthstar, USDA, USGS, AeroGRID, IGN, IGP, Swisstopo, and the GIS User Community