



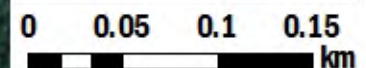
SURVEY RESULTS

Marathon County
Rib Mountain State Park
15 June 2015
RT 3268
Surveyors: C Anderson
Route Length: 2.63 km
1 Species Encountered

Time & Weather

Time (PM)	
8:46	9:42
Temperature (F)	
64.9	63.0
Relative Humidity (%)	
NA	NA
Wind (m/s)	
0.0	1.6

Notes: Relative humidity readings not available online

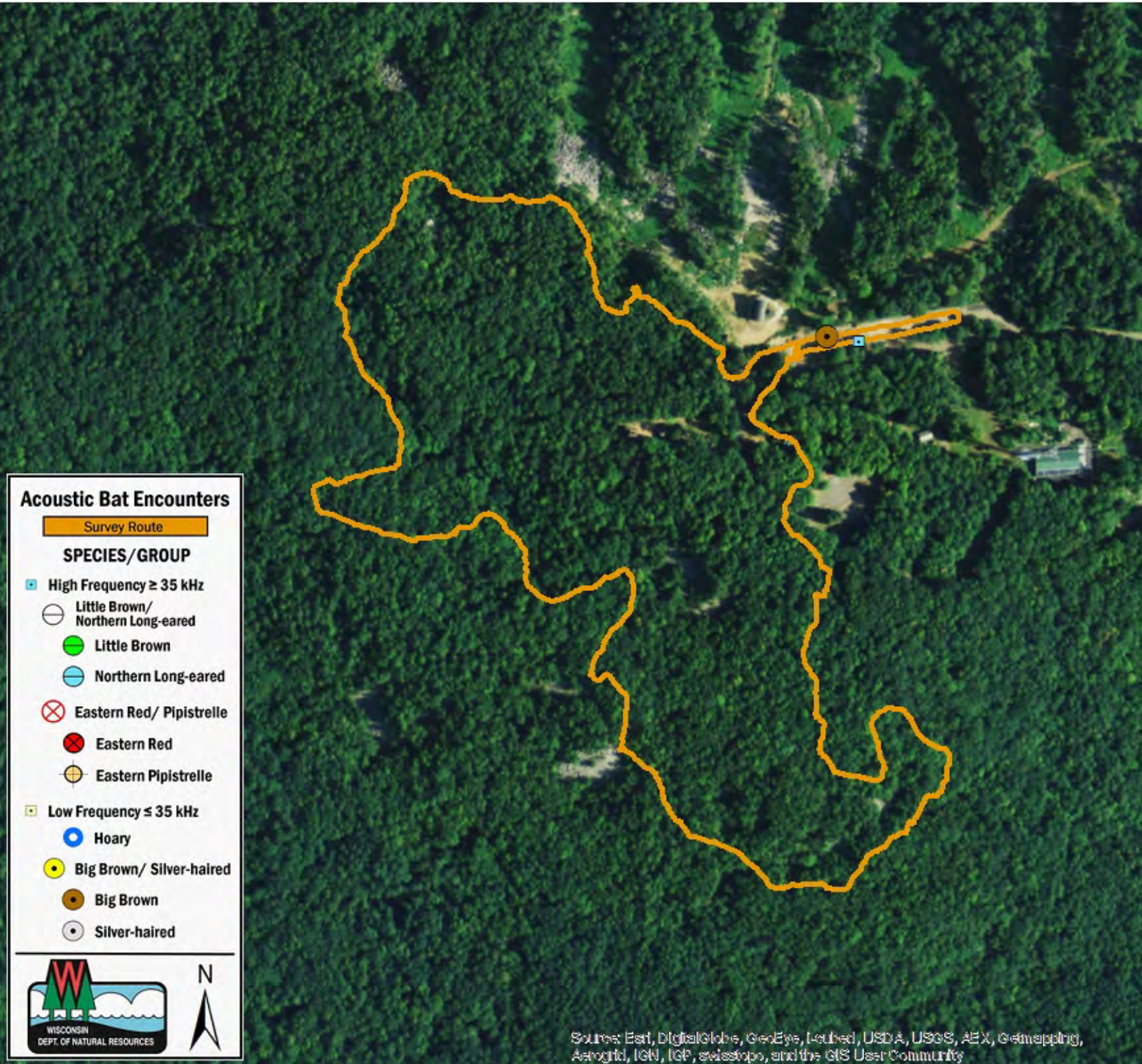




Acoustic Bat Encounters

Survey Route

SPECIES/GROUP

- High Frequency ≥ 35 kHz
 - Little Brown/Northern Long-eared
 - Little Brown
 - Northern Long-eared
 - Eastern Red/ Pipistrelle
 - Eastern Red
 - Eastern Pipistrelle
- Low Frequency ≤ 35 kHz
 - Hoary
 - Big Brown/ Silver-haired
 - Big Brown
 - Silver-haired



Sources: Esri, DigitalGlobe, GeoEye, Earthstar, USDA, USGS, AeroGRID, IGN, IGP, swisstopo, and the GIS User Community