



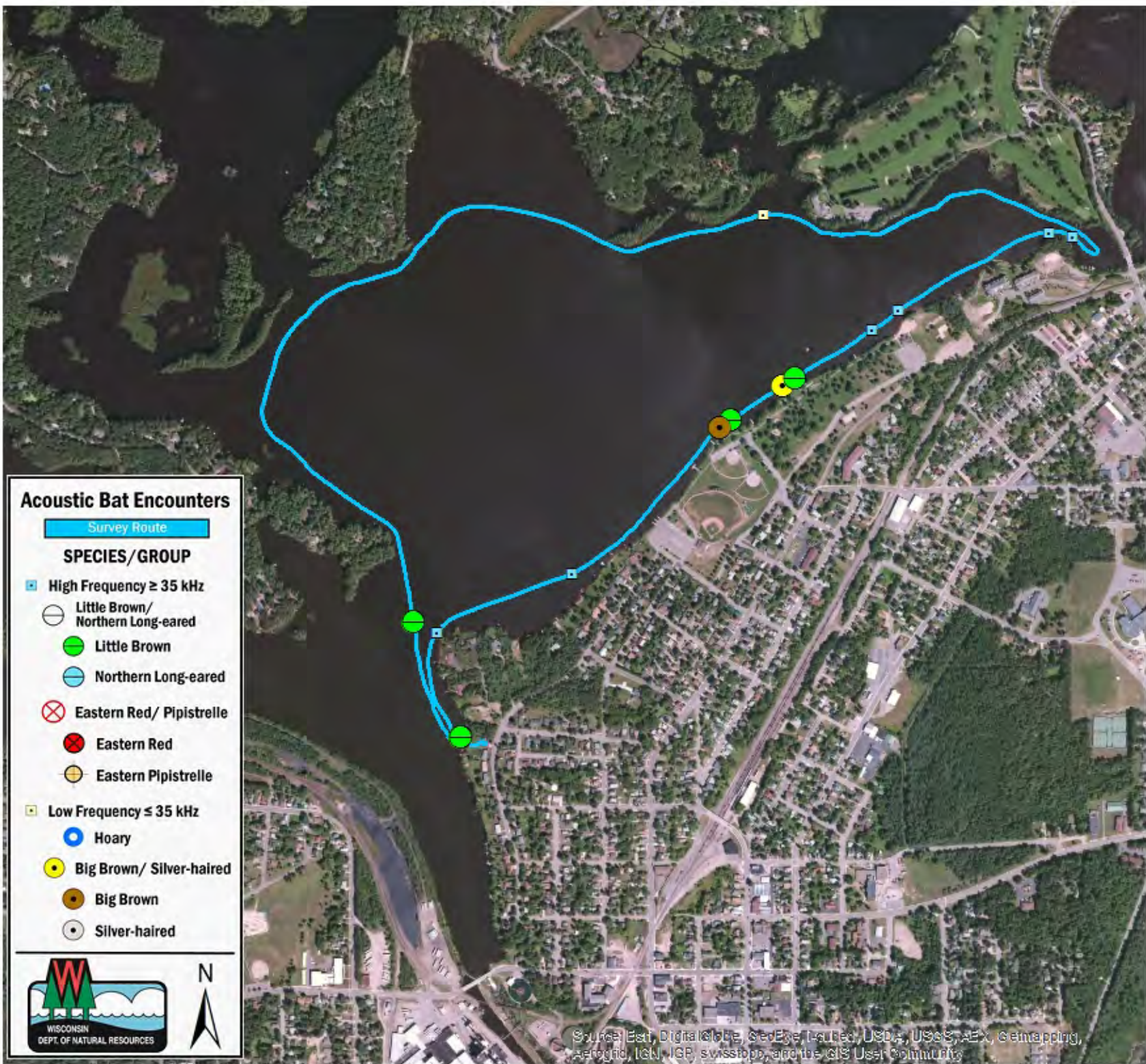
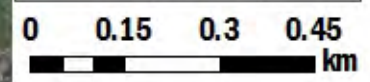
SURVEY RESULTS

Oneida County
 Boom Lake
 4 July 2015
 RT 3335
 Surveyors: E Taylor
 Route Length: 5.67 km
 2 Species Encountered

Time & Weather

Time (PM)	
9:30	11:15
Temperature (F)	
64.0	62.0
Relative Humidity (%)	
93.0	93.0
Wind (m/s)	
0.0	0.0

Notes: Rhinelander, WI



Acoustic Bat Encounters

Survey Route

SPECIES/GROUP

- High Frequency ≥ 35 kHz
 - Little Brown/Northern Long-eared
 - Little Brown
 - Northern Long-eared
 - Eastern Red/ Pipistrelle
 - Eastern Red
 - Eastern Pipistrelle
- Low Frequency ≤ 35 kHz
 - Hoary
 - Big Brown/ Silver-haired
 - Big Brown
 - Silver-haired



Source: Esri, DigitalGlobe, GeoEye, Earthstar (USA), USGS, AeroGRID, IGN, JGP, swisstopo, and the GIS User Community