

# Acoustic Bat Encounters

Survey Route

## SPECIES/GROUP

### High Frequency ≥ 35 kHz

- Little Brown/  
Northern Long-eared
- Little Brown
- Northern Long-eared
- ⊗ Eastern Red/ Pipistrelle
- Eastern Red
- Eastern Pipistrelle

### Low Frequency ≤ 35 kHz

- Hoary
- Big Brown/ Silver-haired
- Big Brown
- Silver-haired



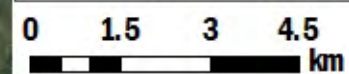
## SURVEY RESULTS

Bayfield/Douglas County  
 NWS 2 - Driving Rt  
 10 July 2015  
 RT 3342  
 Surveyors: A Ledin  
 Route Length: 47.50 km  
 4 Species Encountered

### Time & Weather

Time (PM)	
10:13	12:12 AM
Temperature (F)	
69.0	65.0
Relative Humidity (%)	
70.0	65.0
Wind (m/s)	
0.0	4.47

Notes: Survey completed SW to NE



Source: Esri, DigitalGlobe, GeoEye, Earthstar, USDA, USGS, AeroGRID, IGN, IGP, swisstopo, and the GIS User Community