

## Acoustic Bat Encounters

Survey Route

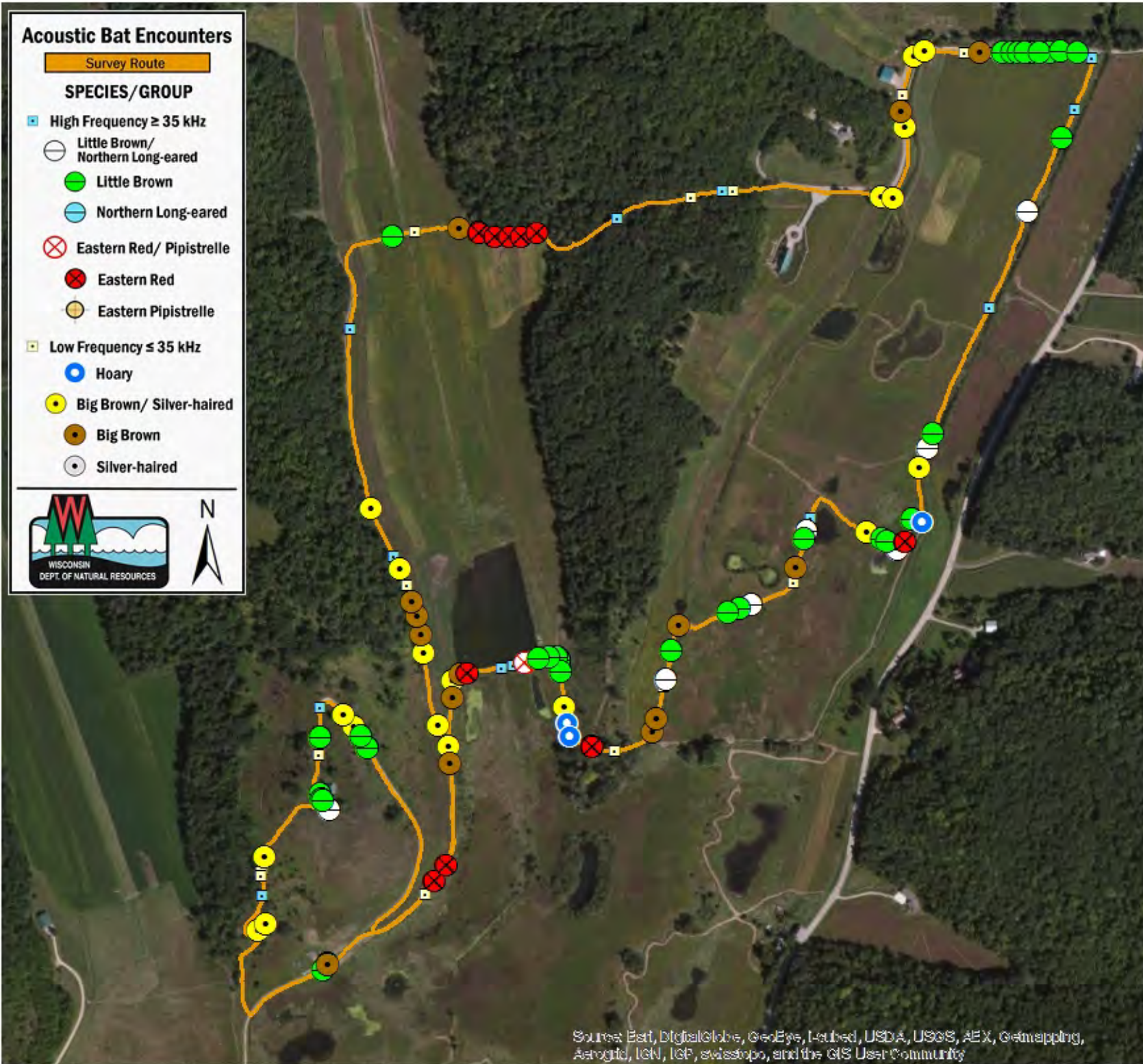
### SPECIES/GROUP

#### High Frequency $\geq 35$ kHz

- Little Brown/  
Northern Long-eared
- Little Brown
- Northern Long-eared
- Eastern Red/ Pipistrelle
- Eastern Red
- Eastern Pipistrelle

#### Low Frequency $\leq 35$ kHz

- Hoary
- Big Brown/ Silver-haired
- Big Brown
- Silver-haired



## SURVEY RESULTS

Dane County

Swamplovers

15 July 2015

RT 3363

Surveyors: J Durbin

Route Length: 5.75 km

4 Species Encountered

### Time & Weather

Time (PM)

9:12      10:23

Temperature (F)

66.0      65.0

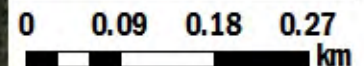
Relative Humidity (%)

86.0      94.0

Wind (m/s)

0.0      0.0

Notes: Cross Plains, WI



Source: Esri, DigitalGlobe, GeoEye, Earthstar, USDA, USGS, AeroGRID, IGN, IGP, swisstopo, and the GIS User Community