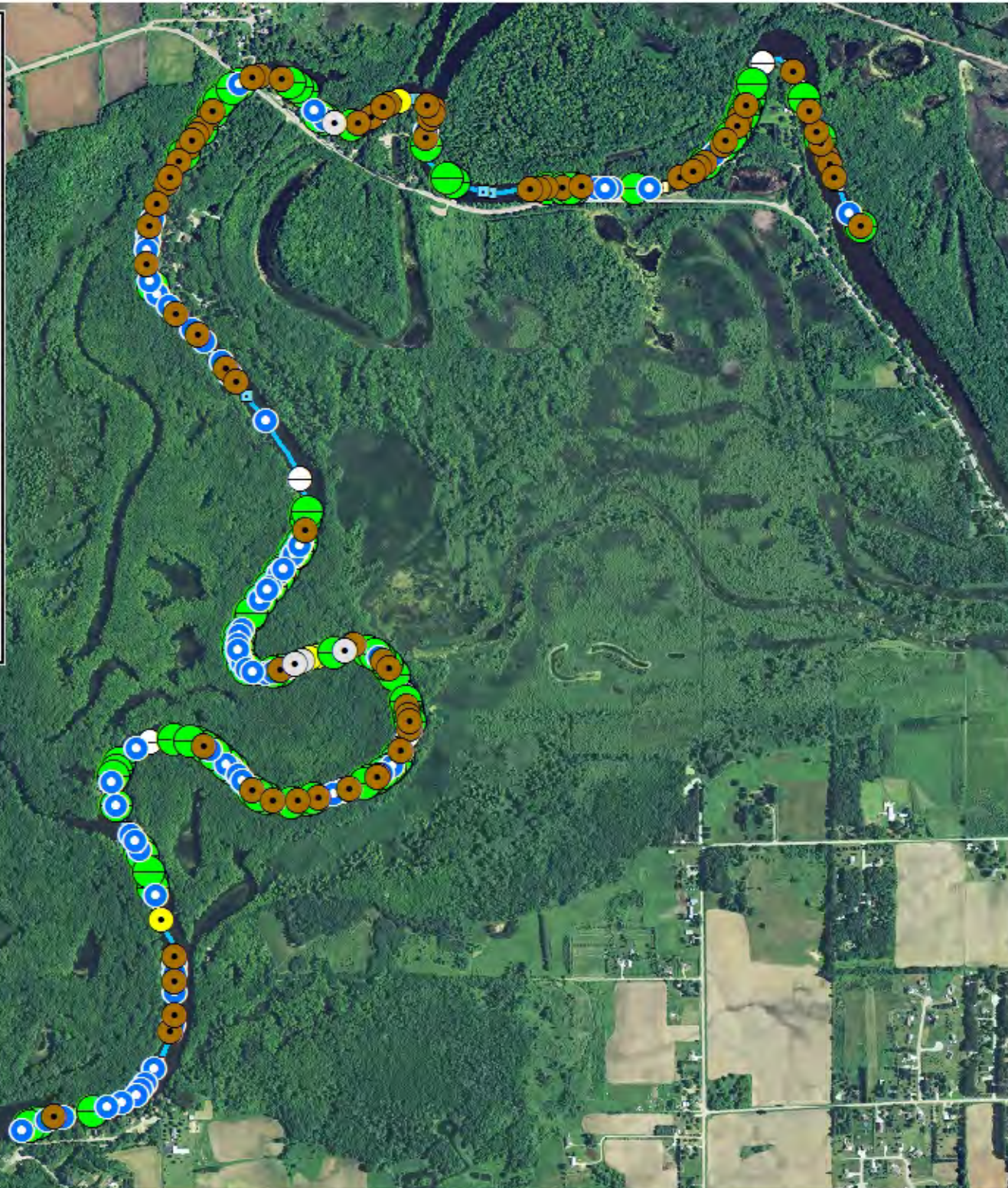


Acoustic Bat Encounters

Survey Route

SPECIES/GROUP

- High Frequency ≥ 35 kHz
 - Little Brown/
Northern Long-eared
 - Little Brown
 - Northern Long-eared
 - Eastern Red/ Pipistrelle
 - Eastern Red
 - Eastern Pipistrelle
- Low Frequency ≤ 35 kHz
 - Hoary
 - Big Brown/ Silver-haired
 - Big Brown
 - Silver-haired



SURVEY RESULTS

Waupaca County

Wolf River 1

15 July 2015

RT 3371

Surveyors: A Badje

Route Length: 8.07 km

4 Species Encountered

Time & Weather

Time (PM)

9:12 10:42

Temperature (F)

66.2 62.6

Relative Humidity (%)

64.0 59.0

Wind (m/s)

4.11 2.05

Notes: BATLAS Rt
Survey completed NE to SW



0 0.2 0.4 0.6
km