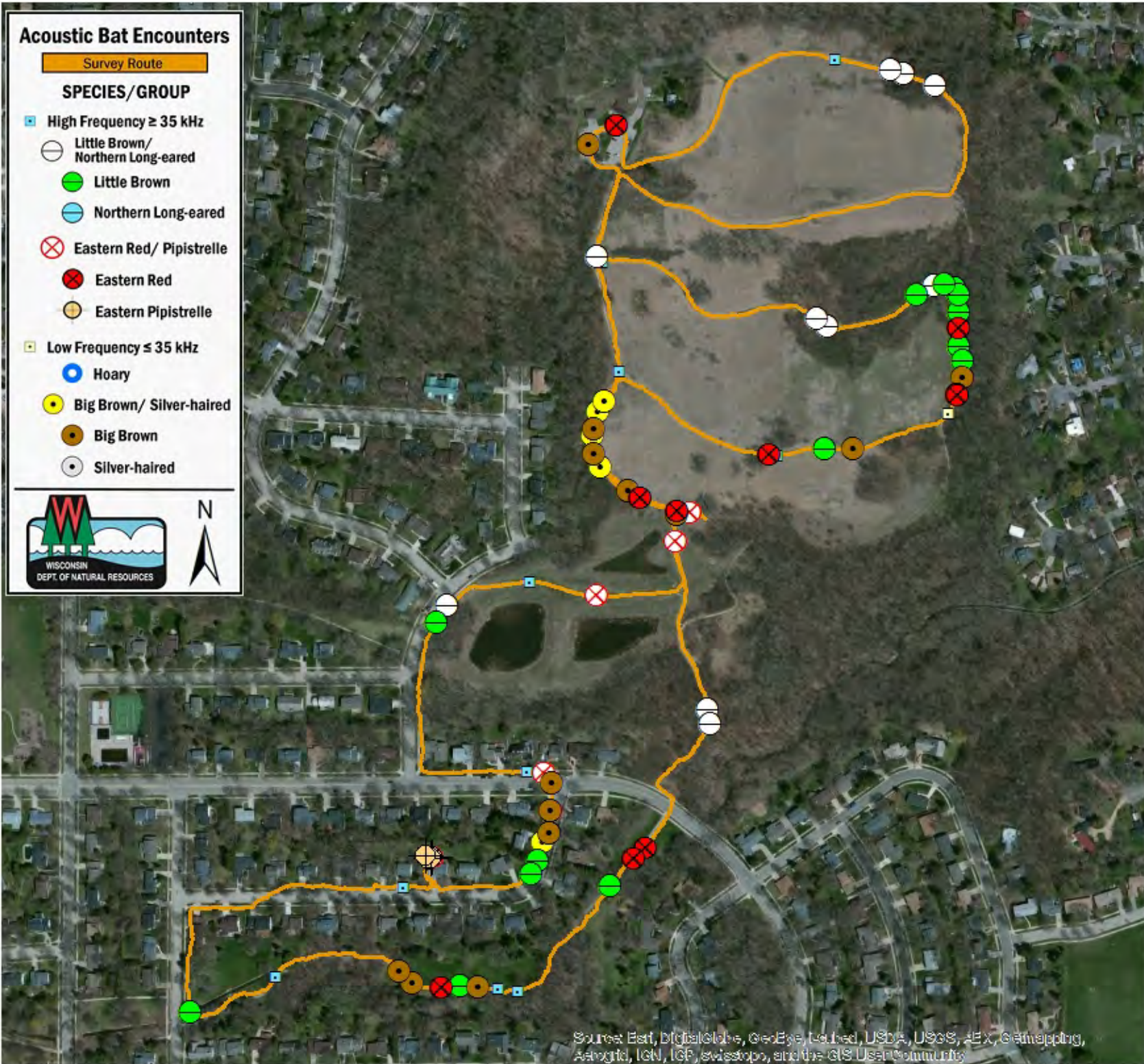


Acoustic Bat Encounters

Survey Route

SPECIES/GROUP

- High Frequency ≥ 35 kHz
- Little Brown/
Northern Long-eared
- Little Brown
- Northern Long-eared
- ⊗ Eastern Red/ Pipistrelle
- Eastern Red
- Eastern Pipistrelle
- Low Frequency ≤ 35 kHz
- Hoary
- Big Brown/ Silver-haired
- Big Brown
- Silver-haired



SURVEY RESULTS

Dane County
Owen Conservation Park
26 July 2015
RT 3415
Surveyors: J Mitchell
Route Length: 4.51 km
4 Species Encountered

Time & Weather

Time (PM)	
8:55	10:04
Temperature (F)	
76.9	75.6
Relative Humidity (%)	
65.0	68.0
Wind (m/s)	
3.31	2.86

Notes:



Source: Esri, DigitalGlobe, GeoEye, Earthstar, USDA, USGS, AeroGRID, IGN, ICG, swisstopo, and the GIS User Community

