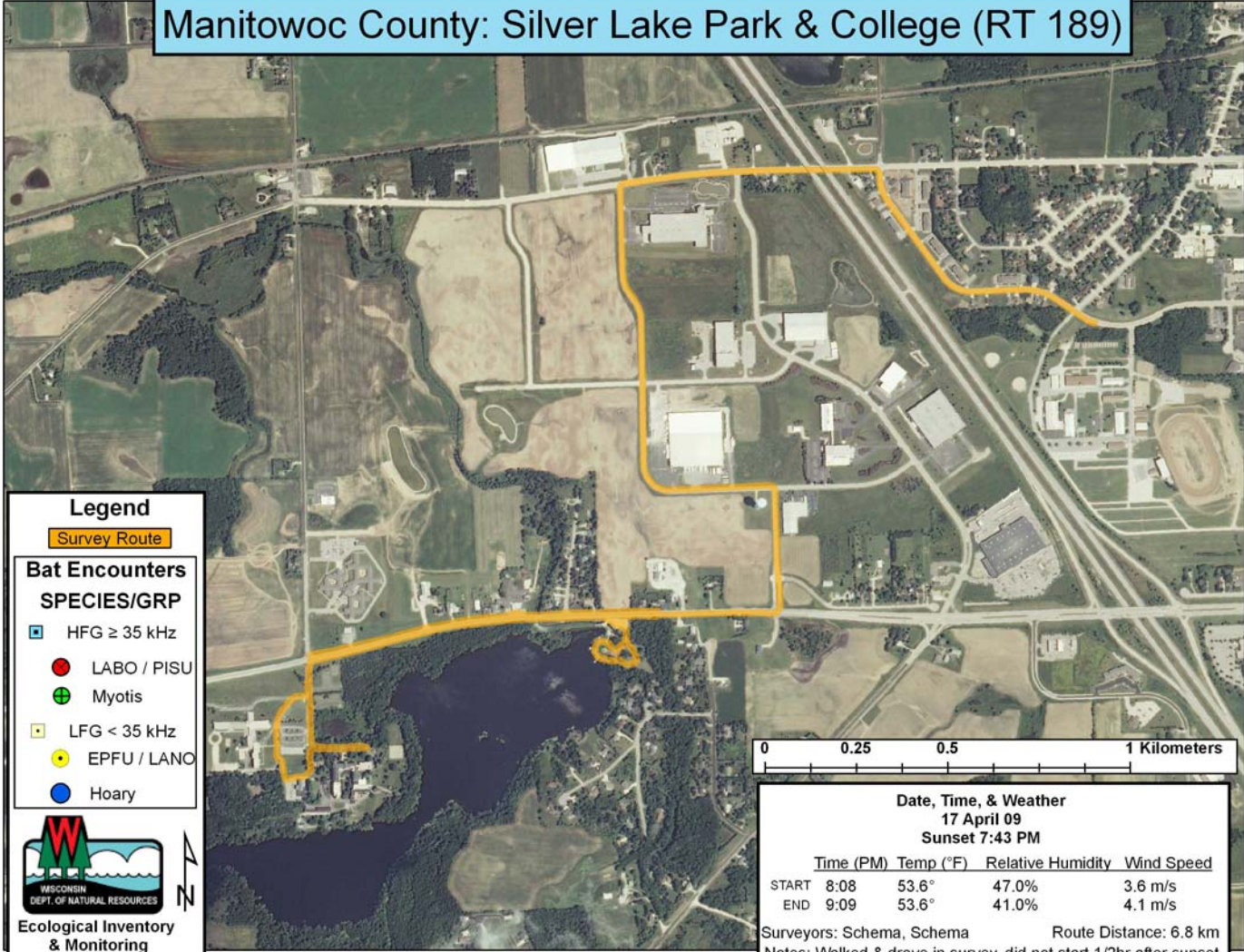


# Manitowoc County: Silver Lake Park & College (RT 189)



## Legend

Survey Route

### Bat Encounters SPECIES/GRP

- HFG  $\geq$  35 kHz
- LABO / PISU
- Myotis
- LFG < 35 kHz
- EPFU / LANO
- Hoary



Ecological Inventory  
& Monitoring

0 0.25 0.5 1 Kilometers

Date, Time, & Weather  
17 April 09  
Sunset 7:43 PM

Time (PM)	Temp (°F)	Relative Humidity	Wind Speed
START 8:08	53.6°	47.0%	3.6 m/s
END 9:09	53.6°	41.0%	4.1 m/s

Surveyors: Schema, Schema

Route Distance: 6.8 km

Notes: Walked & drove in survey, did not start 1/2hr after sunset