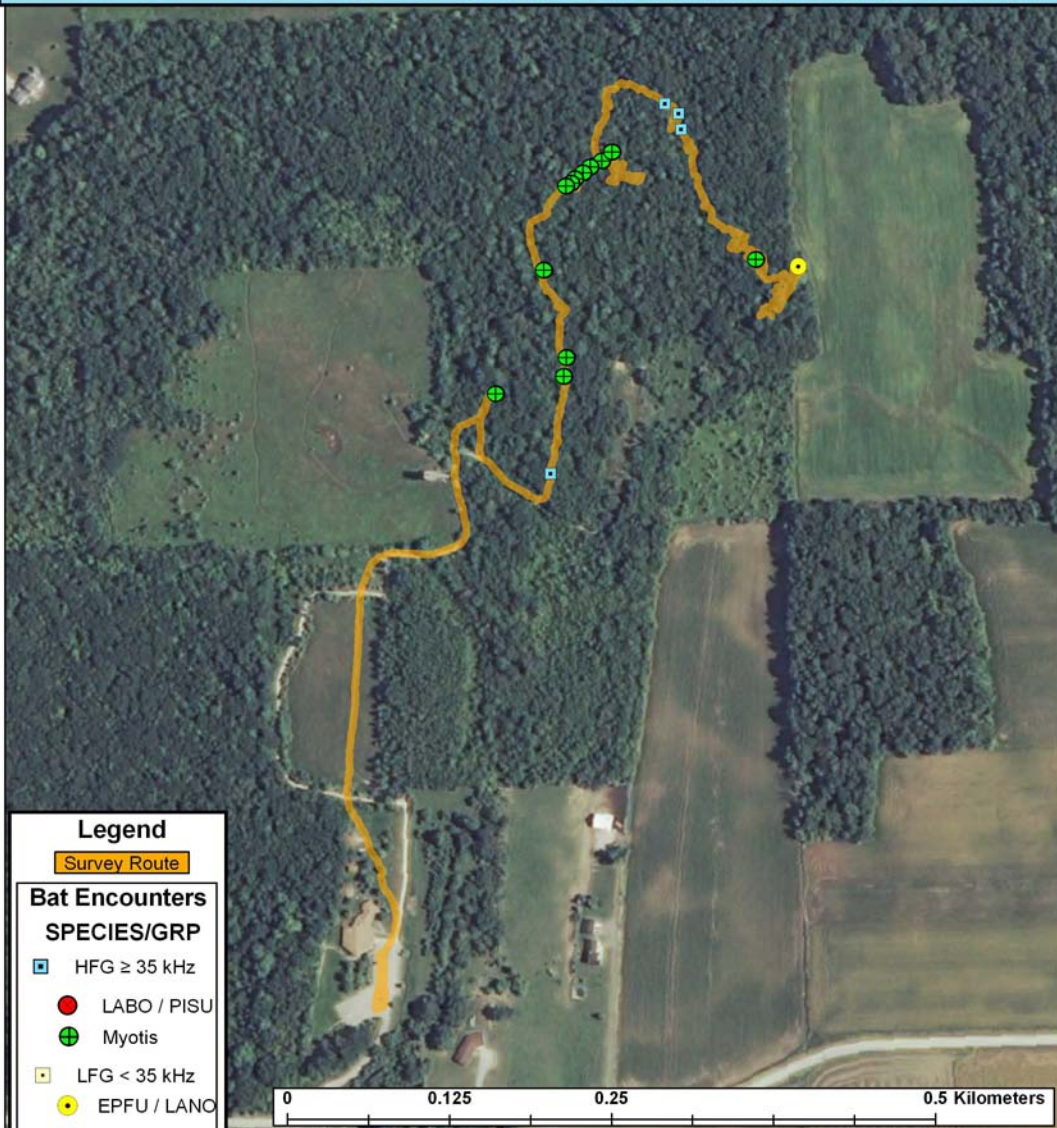


# Calumet County: Ledgview Caves & Nature Center (RT 190)



## Legend

Survey Route

### Bat Encounters

#### SPECIES/GRP

- HFG  $\geq$  35 kHz
- LABO / PISU
- ⊕ Myotis
- LFG < 35 kHz
- EPFU / LANO
- Hoary



Ecological Inventory  
& Monitoring

### Date, Time, & Weather

18 April 09

Sunset 7:43 PM

	Time (PM)	Temp (°F)	Relative Humidity	Wind Speed
START	8:01	66.0°	48.0%	2.6 m/s
END	9:04	60.1°	49.0%	5.1 m/s

Surveyors: Schema, Fiske

Route Distance: 1.4 km

Notes: did not start 1/2hr after sunset