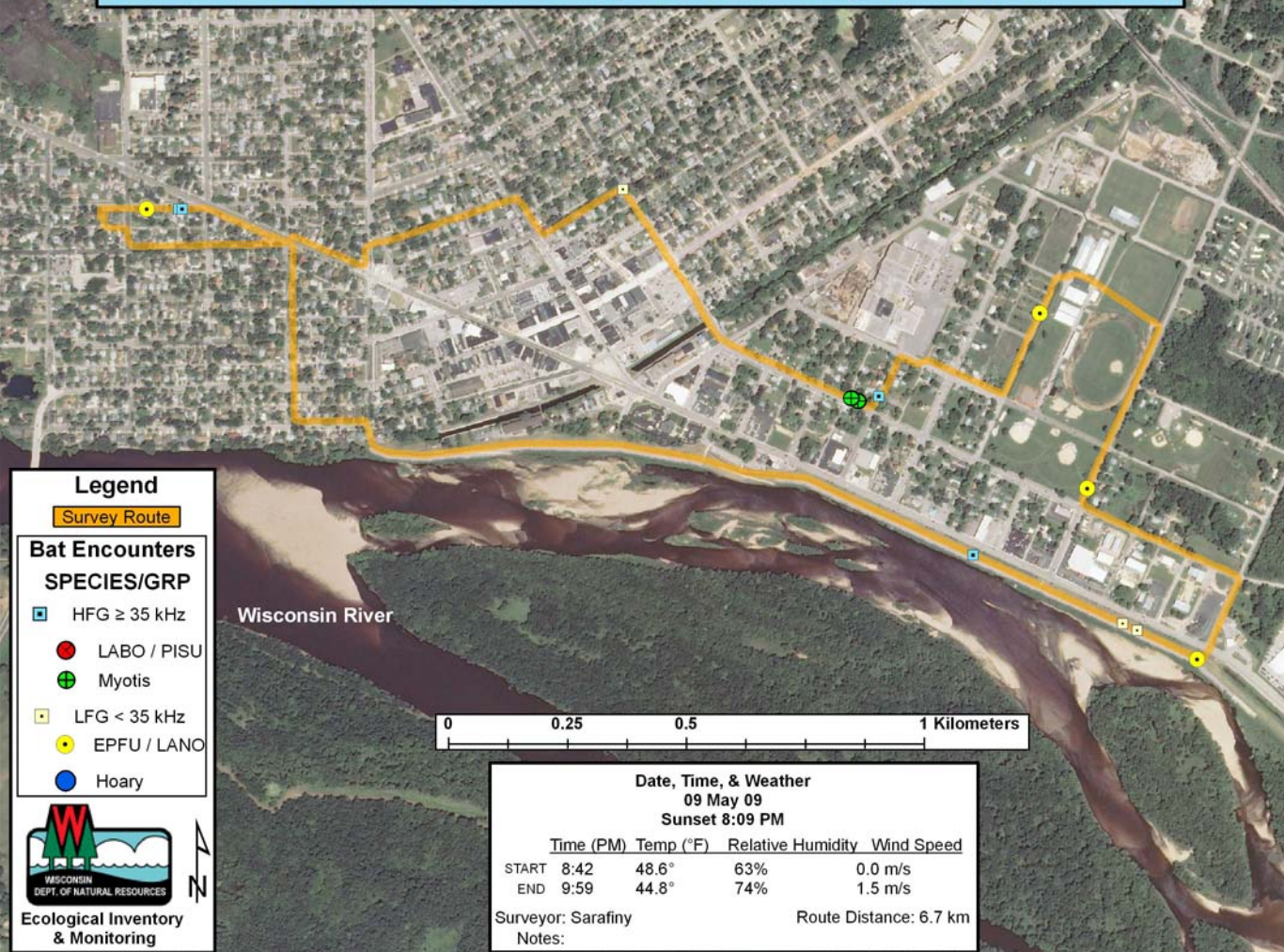


Columbia County: City of Portage/Levee along WI River (RT 227)



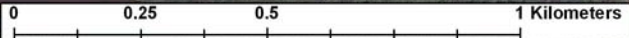
Legend

Survey Route

Bat Encounters SPECIES/GRP

- HFG \geq 35 kHz
- LABO / PISU
- ⊕ Myotis
- LFG < 35 kHz
- EPFU / LANO
- Hoary

Wisconsin River



Ecological Inventory
& Monitoring

Date, Time, & Weather 09 May 09 Sunset 8:09 PM

	Time (PM)	Temp (°F)	Relative Humidity	Wind Speed
START	8:42	48.6°	63%	0.0 m/s
END	9:59	44.8°	74%	1.5 m/s

Surveyor: Sarafiny
Notes:

Route Distance: 6.7 km