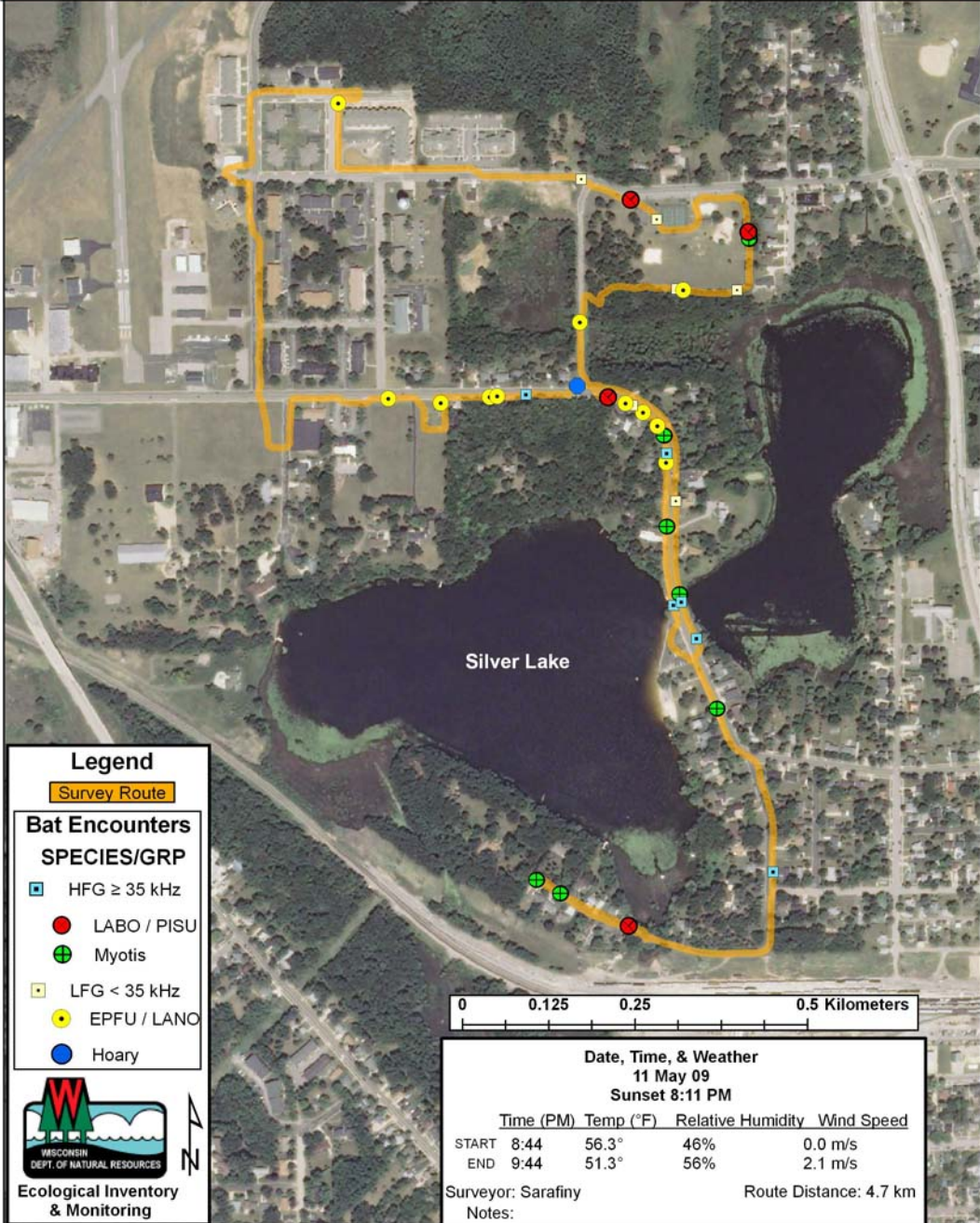


Columbia County: City of Portage/Silver Lake Area (RT 230)



Legend

Survey Route

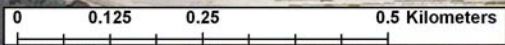
Bat Encounters

SPECIES/GRP

- HFG \geq 35 kHz
- LABO / PISU
- ⊕ Myotis
- LFG < 35 kHz
- EPFU / LANO
- Hoary



Ecological Inventory
& Monitoring



Date, Time, & Weather

11 May 09

Sunset 8:11 PM

	Time (PM)	Temp (°F)	Relative Humidity	Wind Speed
START	8:44	56.3°	46%	0.0 m/s
END	9:44	51.3°	56%	2.1 m/s

Surveyor: Sarafiny

Route Distance: 4.7 km

Notes: