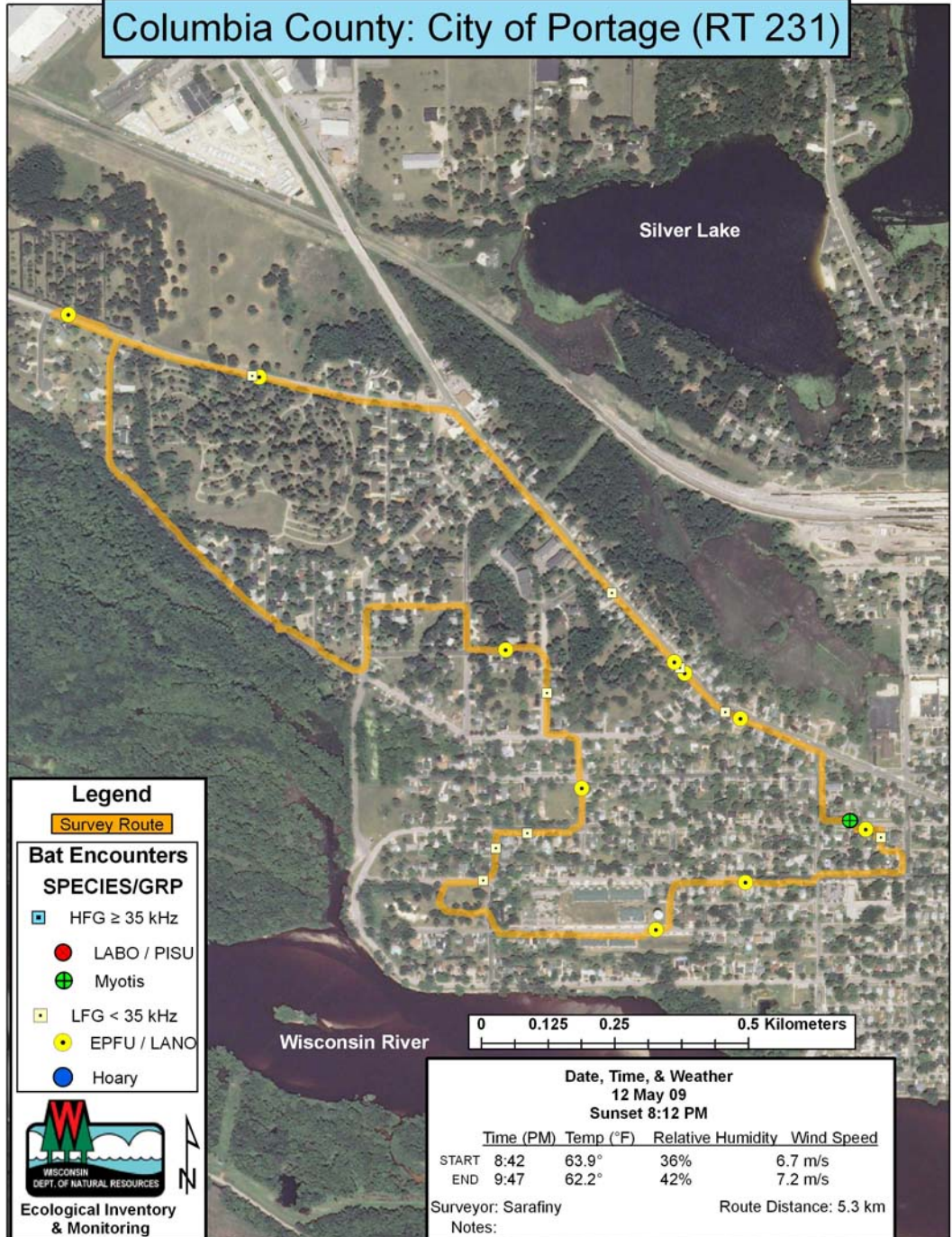


Columbia County: City of Portage (RT 231)



Legend

Survey Route

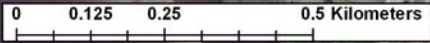
Bat Encounters

SPECIES/GRP

- HFG \geq 35 kHz
- LABO / PISU
- Myotis
- LFG < 35 kHz
- EPFU / LANO
- Hoary



Ecological Inventory
& Monitoring



Date, Time, & Weather

12 May 09

Sunset 8:12 PM

	Time (PM)	Temp (°F)	Relative Humidity	Wind Speed
START	8:42	63.9°	36%	6.7 m/s
END	9:47	62.2°	42%	7.2 m/s

Surveyor: Sarafiny

Route Distance: 5.3 km

Notes: