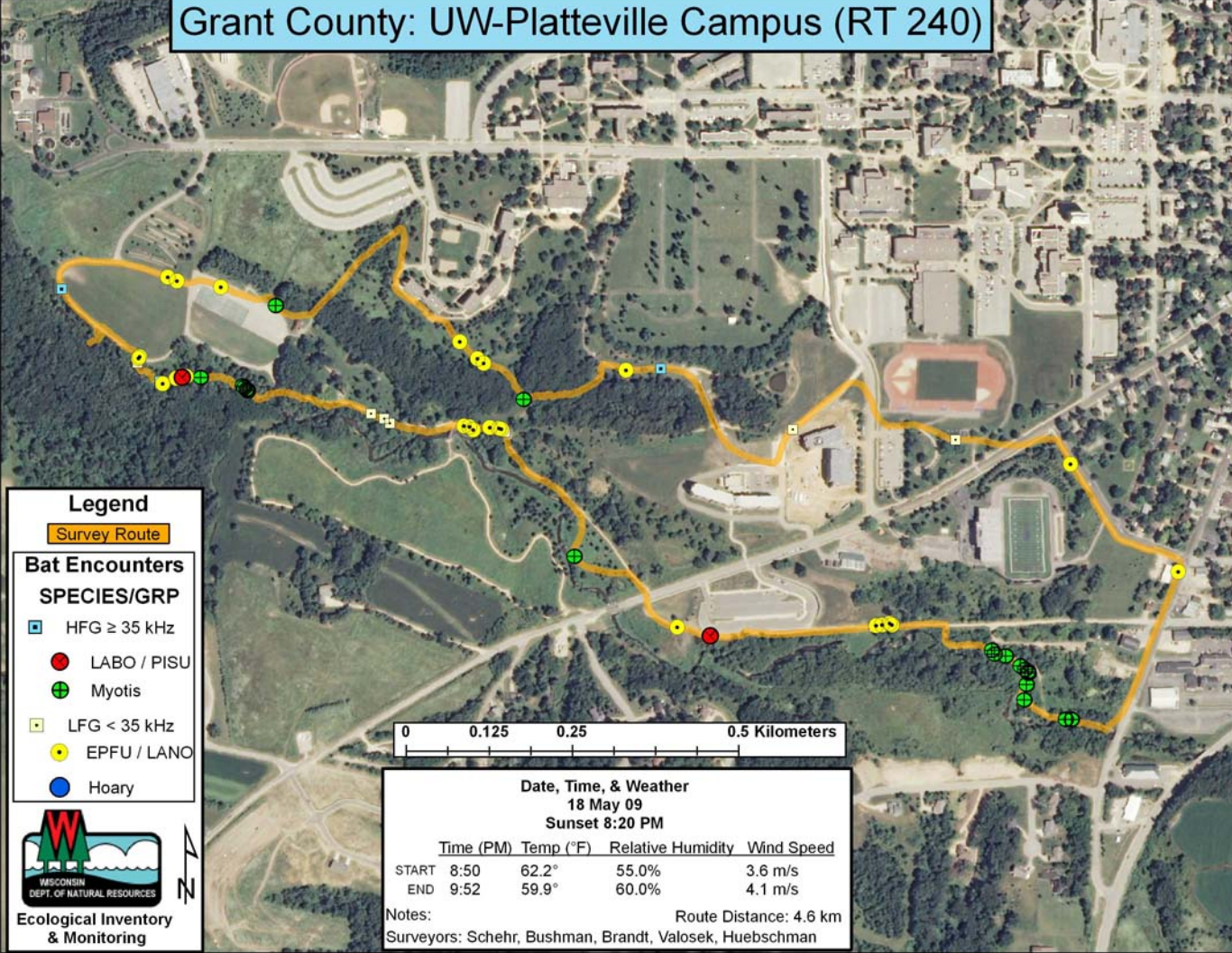


# Grant County: UW-Platteville Campus (RT 240)



## Legend

Survey Route

### Bat Encounters SPECIES/GRP

- HFG  $\geq$  35 kHz
- LABO / PISU
- Myotis
- LFG < 35 kHz
- EPFU / LANO
- Hoary

0 0.125 0.25 0.5 Kilometers

### Date, Time, & Weather

18 May 09

Sunset 8:20 PM

	Time (PM)	Temp (°F)	Relative Humidity	Wind Speed
START	8:50	62.2°	55.0%	3.6 m/s
END	9:52	59.9°	60.0%	4.1 m/s

Notes:

Route Distance: 4.6 km

Surveyors: Schehr, Bushman, Brandt, Valosek, Huebschman



Ecological Inventory  
& Monitoring