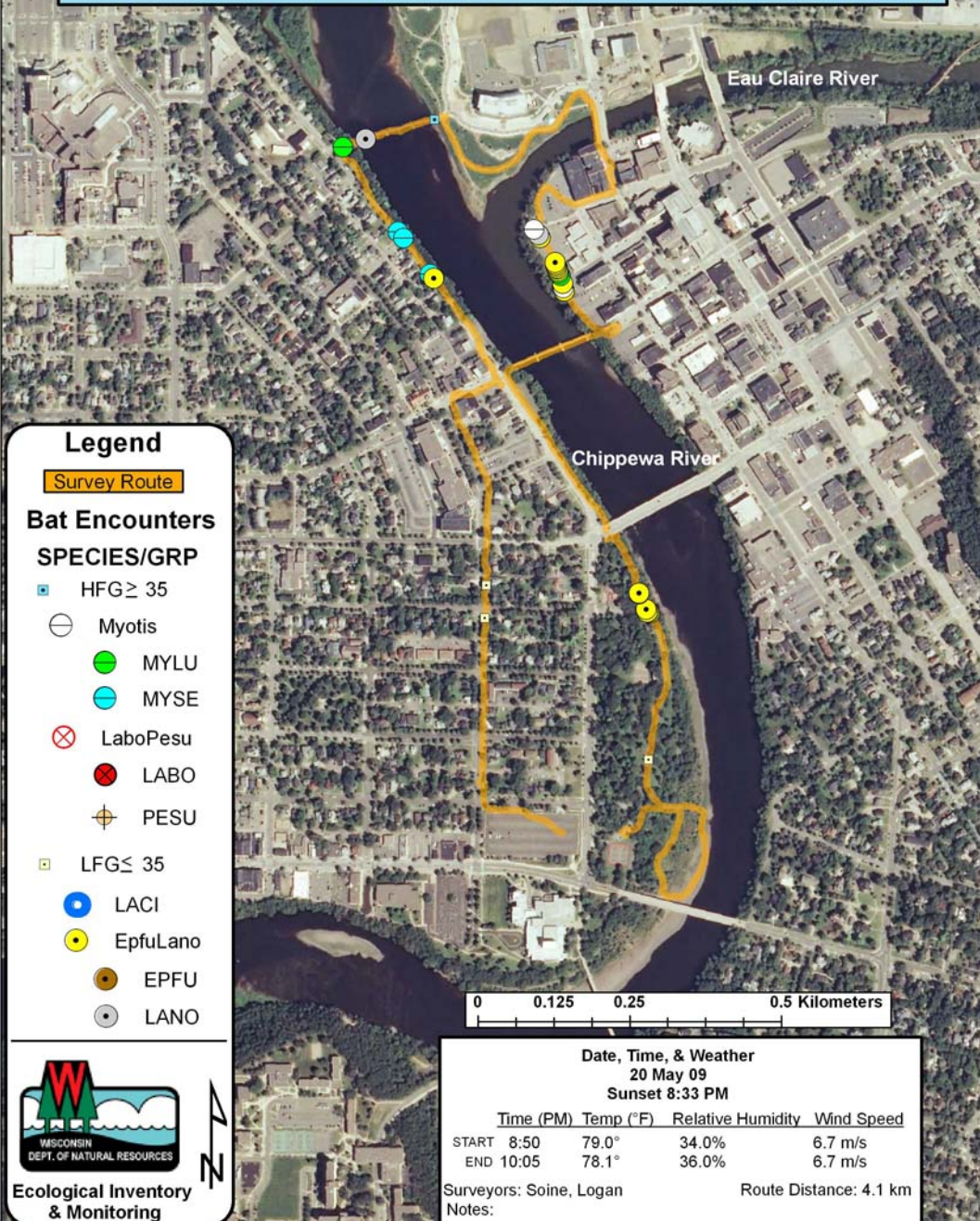


# Eau Claire County: Chippewa River Trail (RT 242)



## Legend

Survey Route

### Bat Encounters

#### SPECIES/GRP

HFG  $\geq$  35

Myotis

MYLU

MYSE

LaboPesu

LABO

PESU

LFG  $\leq$  35

LACI

EpfuLano

EPFU

LANO



Ecological Inventory  
& Monitoring

0 0.125 0.25 0.5 Kilometers

#### Date, Time, & Weather

20 May 09

Sunset 8:33 PM

	Time (PM)	Temp (°F)	Relative Humidity	Wind Speed
START	8:50	79.0°	34.0%	6.7 m/s
END	10:05	78.1°	36.0%	6.7 m/s

Surveyors: Soine, Logan

Route Distance: 4.1 km

Notes: