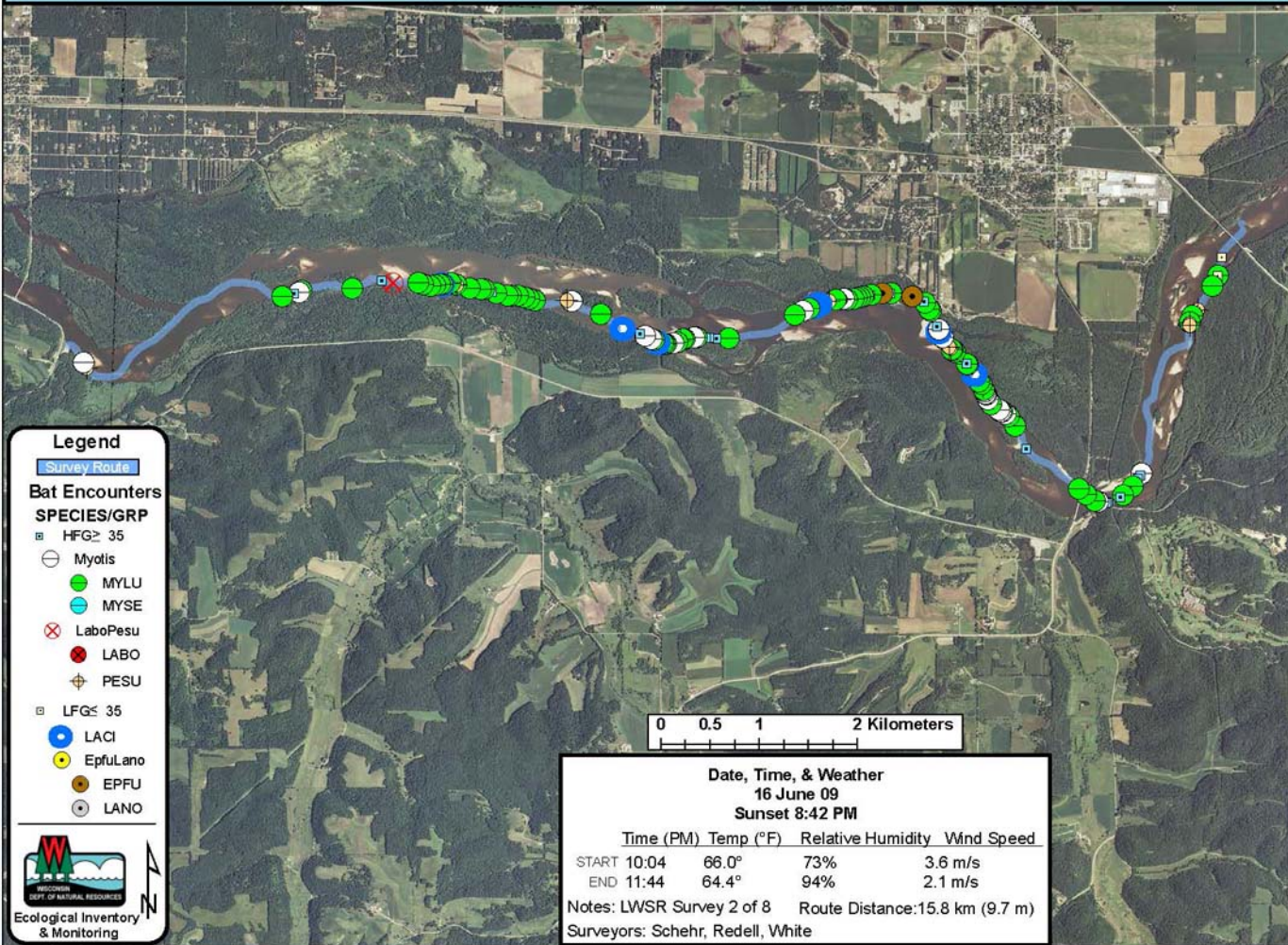


# Waukesha/Iowa/Richland Counties: WI River [Spring Green to Lone Rock] (RT 286)



## Legend

Survey Route

## Bat Encounters

### SPECIES/GRP

▣ HFG ≥ 35

⊖ Myotis

● MYLU

● MYSE

⊗ LaboPesu

⊗ LABO

⊕ PESU

▣ LFG ≤ 35

● LACI

● EpFuLano

● EPFU

● LANO



Ecological Inventory  
& Monitoring

0 0.5 1 2 Kilometers

## Date, Time, & Weather

16 June 09

Sunset 8:42 PM

	Time (PM)	Temp (°F)	Relative Humidity	Wind Speed
START	10:04	66.0°	73%	3.6 m/s
END	11:44	64.4°	94%	2.1 m/s

Notes: LWSR Survey 2 of 8      Route Distance: 15.8 km (9.7 m)

Surveyors: Schehr, Redell, White