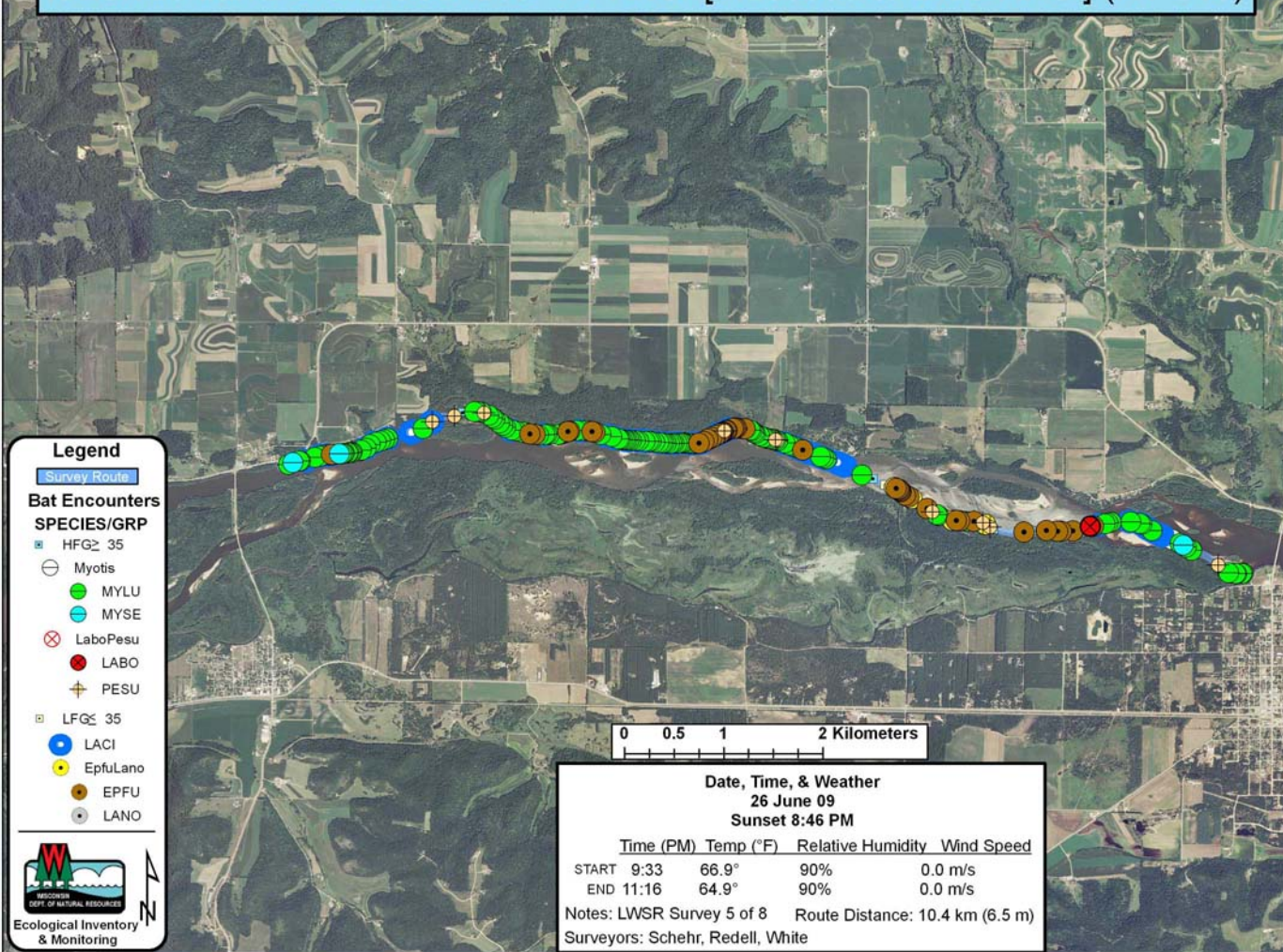


# Iowa/Richland/Grant Counties: WI River [Muscodia to Blue River] (RT 315)

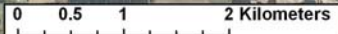


## Legend

Survey Route

### Bat Encounters SPECIES/GRP

- HFG ≥ 35
- Myotis
- MYLU
- MYSE
- LaboPesu
- LABO
- PESU
- LFG ≤ 35
- LACI
- Epfulano
- EPFU
- LANO



### Date, Time, & Weather

26 June 09

Sunset 8:46 PM

	Time (PM)	Temp (°F)	Relative Humidity	Wind Speed
START	9:33	66.9°	90%	0.0 m/s
END	11:16	64.9°	90%	0.0 m/s

Notes: LWSR Survey 5 of 8      Route Distance: 10.4 km (6.5 m)

Surveyors: Schehr, Redell, White

