

# Columbia County: Goose Pond (RT 332)

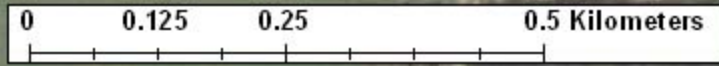
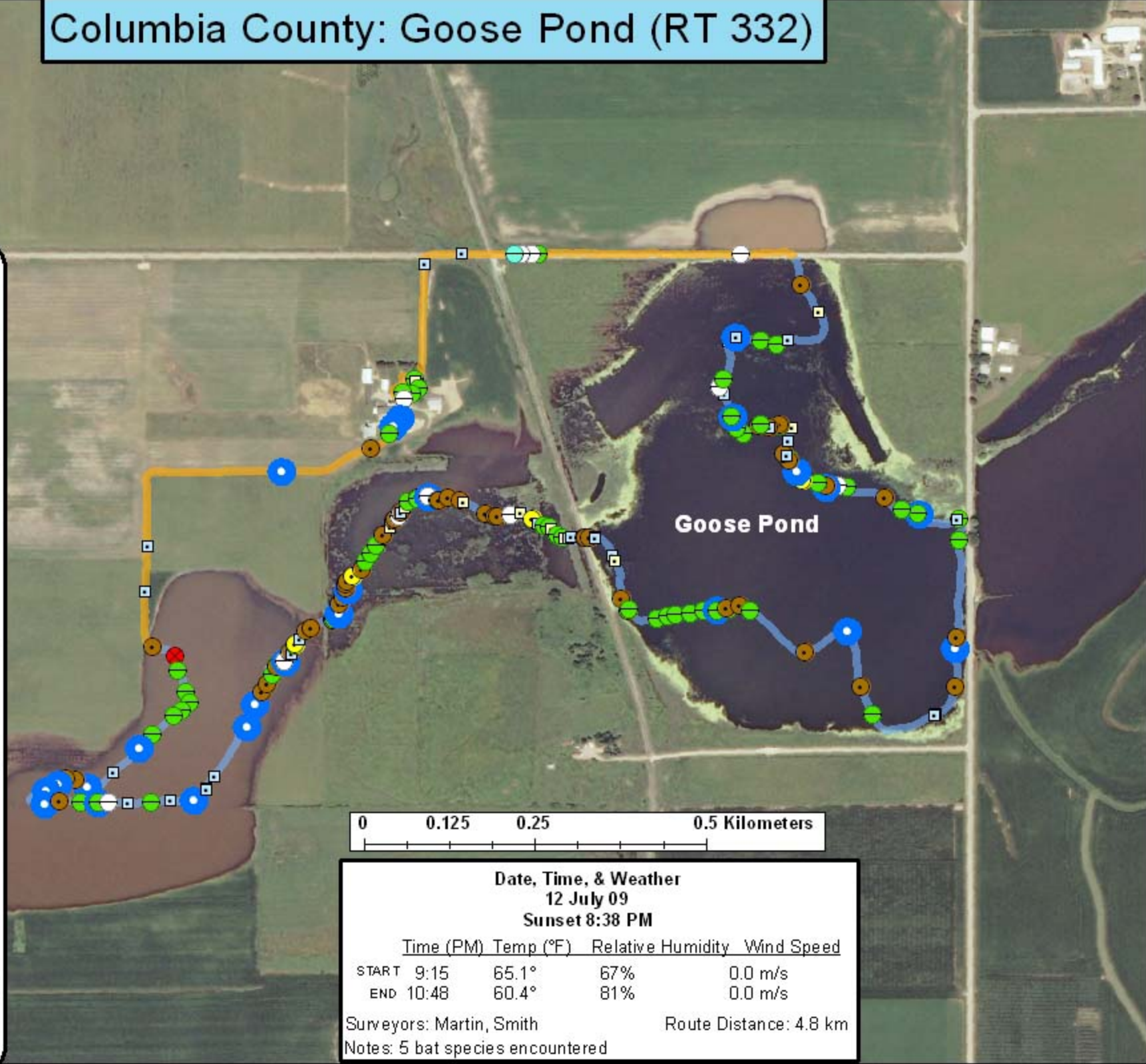
**Legend**

Water Route  
Land Route

**Bat Encounters**

**SPECIES/GRP**

- HFG ≥ 35
- ⊖ Myotis
- MYLU
- MYSE
- ⊗ LaboPesu
- LABO
- ⊕ PESU
- LFG ≤ 35
- LACI
- EpfuLano
- EPFU
- LANO



**Date, Time, & Weather**  
 12 July 09  
 Sunset 8:38 PM

	Time (PM)	Temp (°F)	Relative Humidity	Wind Speed
START	9:15	65.1°	67%	0.0 m/s
END	10:48	60.4°	81%	0.0 m/s

Surveyors: Martin, Smith      Route Distance: 4.8 km  
 Notes: 5 bat species encountered



**Ecological Inventory & Monitoring**

