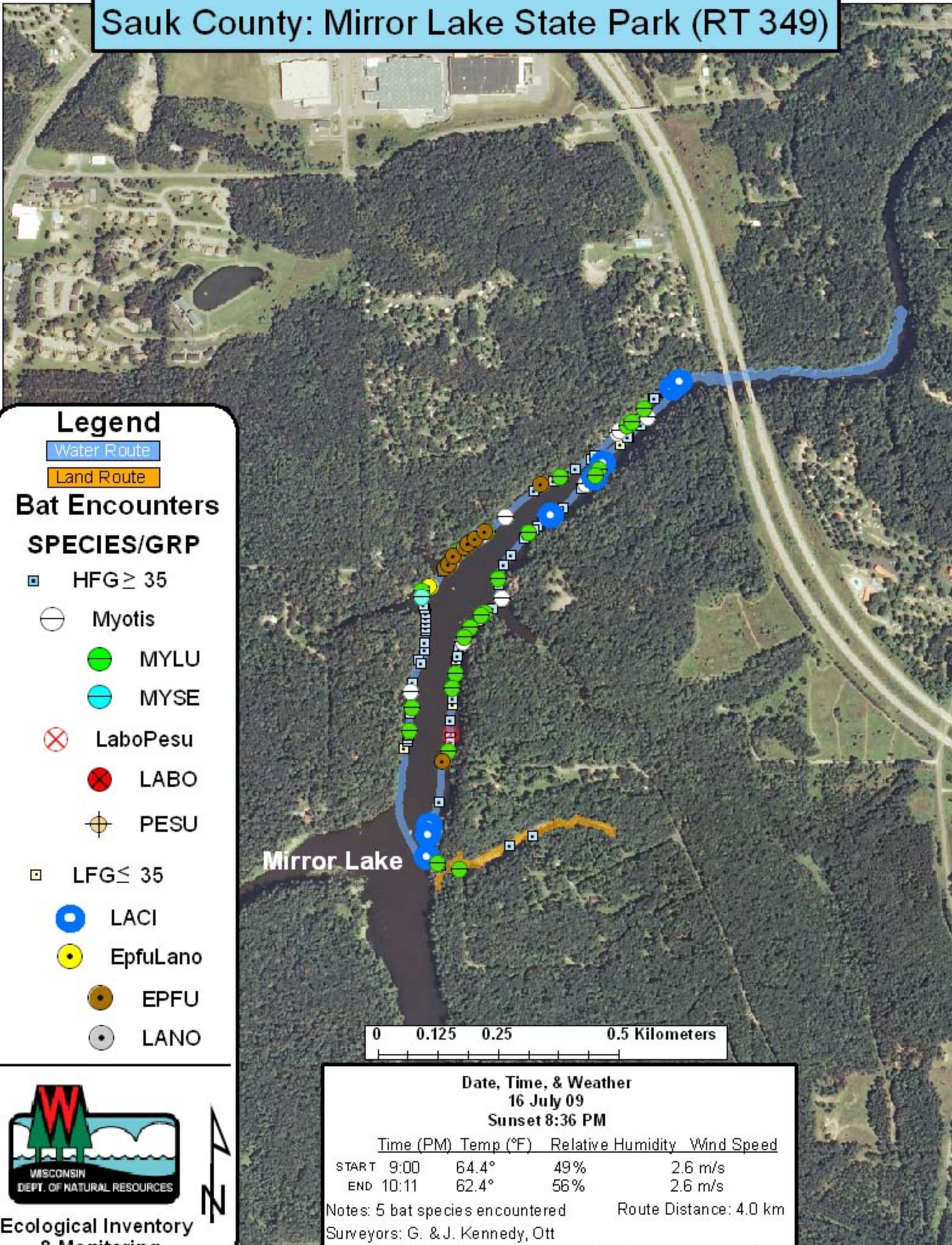


Sauk County: Mirror Lake State Park (RT 349)



Legend

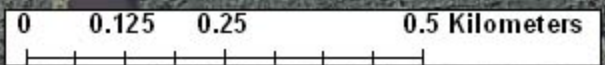
- Water Route
- Land Route

Bat Encounters

SPECIES/GRP

- HFG ≥ 35
- Myotis
- MYLU
- MYSE
- LaboPesu
- LABO
- PESU
- LFG ≤ 35
- LACI
- EpfuLano
- EPFU
- LANO

Mirror Lake



Ecological Inventory & Monitoring

Date, Time, & Weather

16 July 09
Sunset 8:36 PM

	Time (PM)	Temp (°F)	Relative Humidity	Wind Speed
START	9:00	64.4°	49%	2.6 m/s
END	10:11	62.4°	56%	2.6 m/s

Notes: 5 bat species encountered Route Distance: 4.0 km
Surveyors: G. & J. Kennedy, Ott