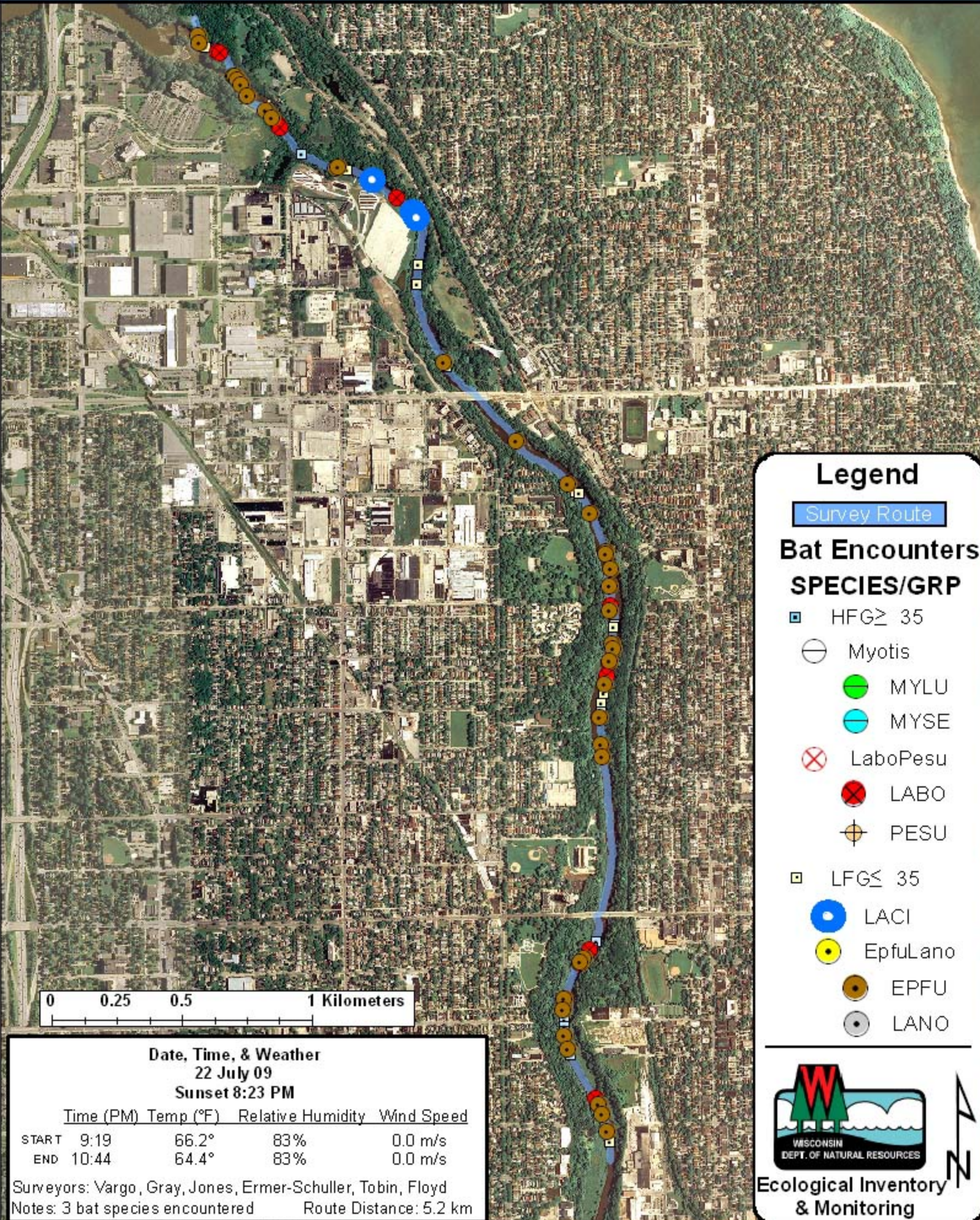


Milwaukee County: Milwaukee River - North of Downtown (RT 369)



Legend

Survey Route

Bat Encounters SPECIES/GRP

- ▣ HFG ≥ 35
- ⊖ Myotis
- MYLU
- MYSE
- ⊗ LaboPesu
- LABO
- ⊕ PESU
- ▣ LFG ≤ 35
- LACI
- EpfuLano
- EPFU
- LANO

0 0.25 0.5 1 Kilometers

Date, Time, & Weather
22 July 09
Sunset 8:23 PM

	Time (PM)	Temp (°F)	Relative Humidity	Wind Speed
START	9:19	66.2°	83%	0.0 m/s
END	10:44	64.4°	83%	0.0 m/s

Surveyors: Vargo, Gray, Jones, Ermer-Schuller, Tobin, Floyd
 Notes: 3 bat species encountered Route Distance: 5.2 km



Ecological Inventory & Monitoring

