

# Dane County: Yahara River [Token Creek to Lake Mendota] # 1 (RT 377)

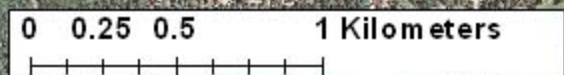
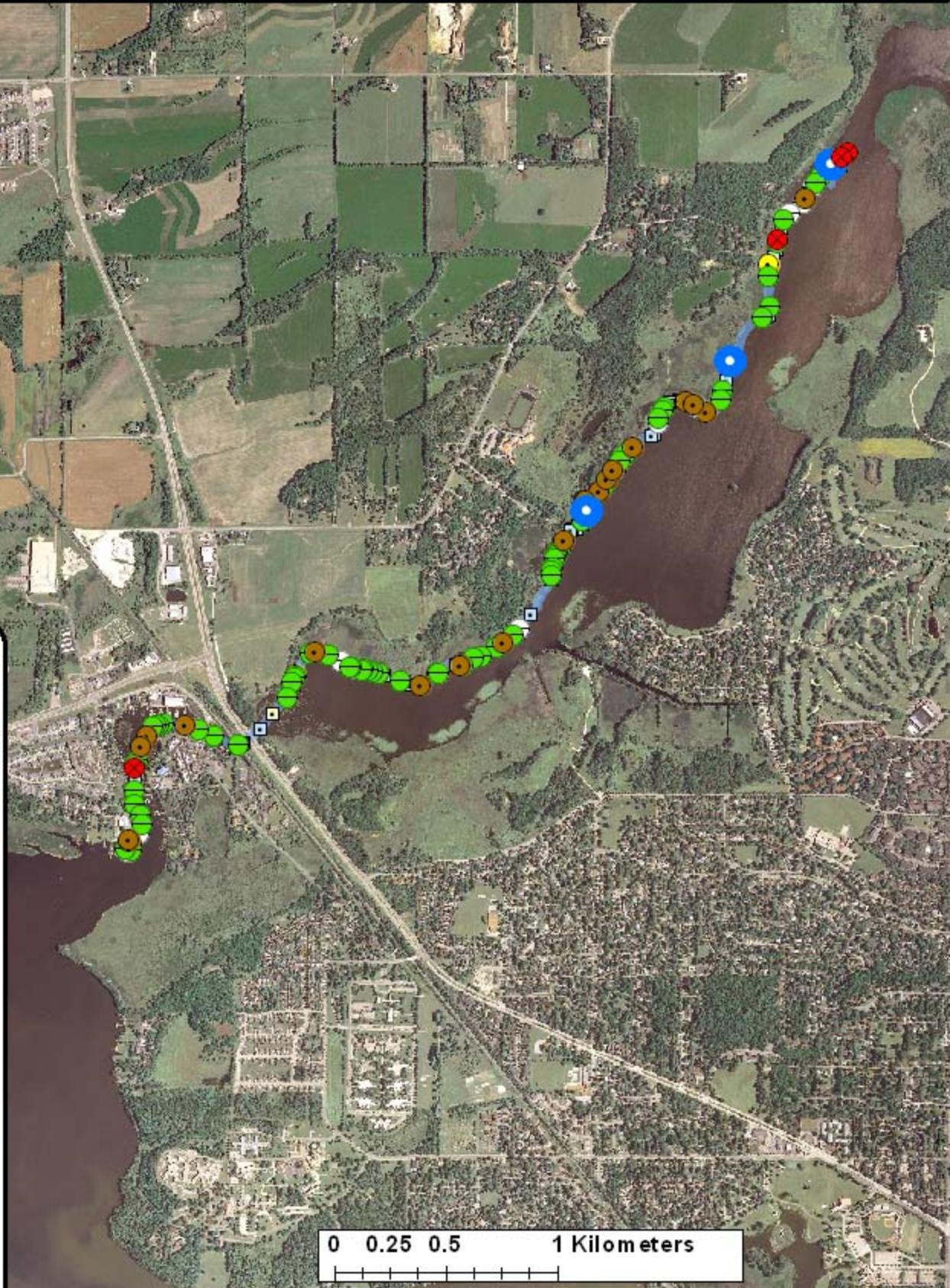
**Legend**

Survey Route

**Bat Encounters**

**SPECIES/GRP**

- HFG ≥ 35
- ⊖ Myotis
- MYLU
- MYSE
- ⊗ LaboPesu
- LABO
- ⊕ PESU
- LFG ≤ 35
- LACI
- EpfuLano
- EPFU
- LANO



Lake Mendota

**Date, Time, & Weather**  
**28 July 09**  
**Sunset 8:24 PM**

	Time (PM)	Temp (°F)	Relative Humidity	Wind Speed
START	9:20	70.0°	57%	0.0 m/s
END	10:40	63.0°	72%	2.6 m/s

Surveyors: Boos, Staffen      Route Distance: 5.5 km  
 Notes: 4 bat species found, Madison Chain of Lakes #1

**Ecological Inventory & Monitoring**