

Jefferson County: Haumerson's Pond, Fort Atkinson (RT 396)


Legend

Survey Route

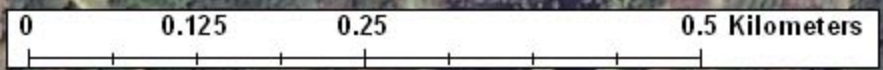
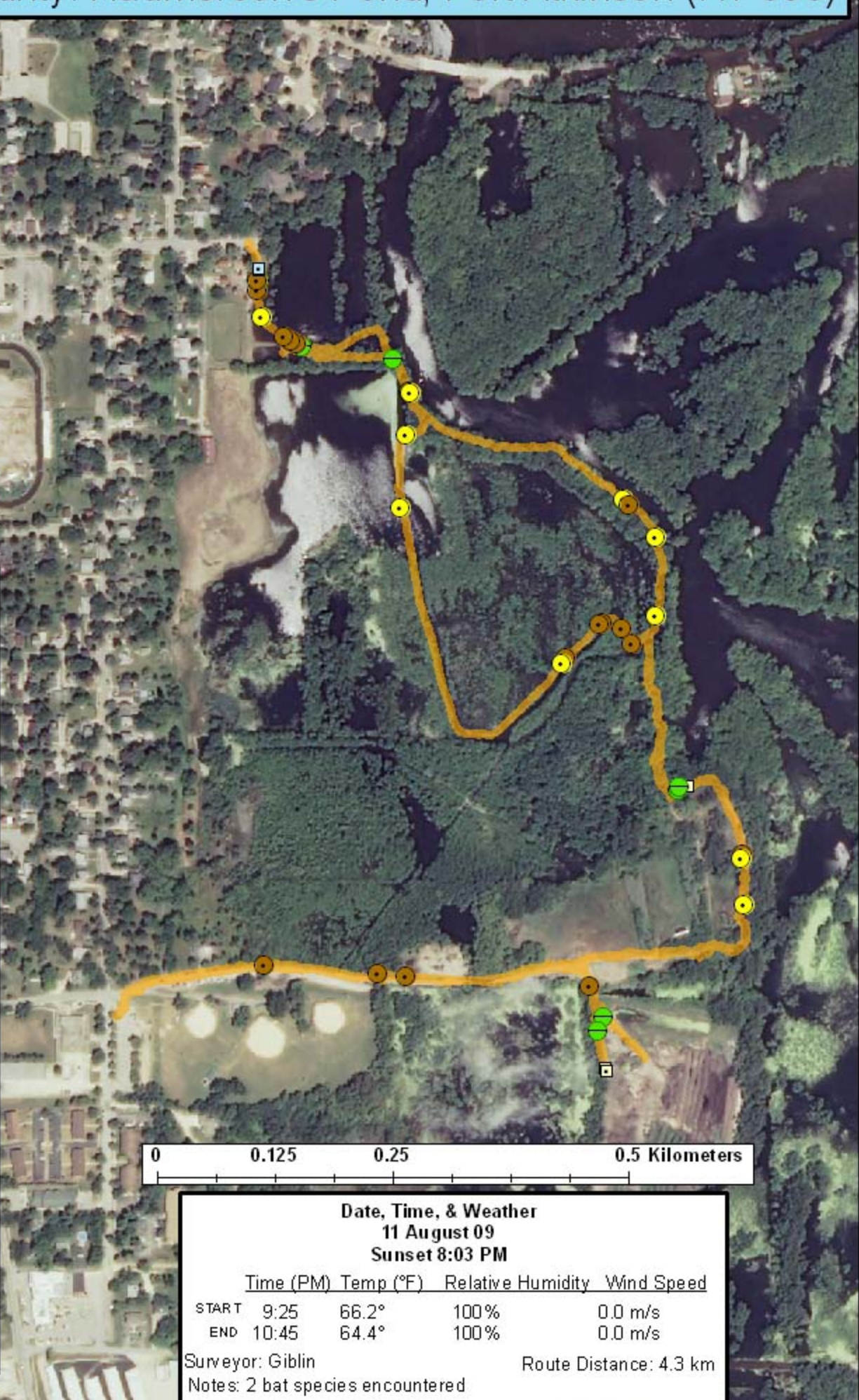
Bat Encounters

SPECIES/GRP

- HFG ≥ 35
- ⊖ Myotis
- MYLU
- MYSE
- ⊗ LaboPesu
- LABO
- ⊕ PESU
- LFG ≤ 35
- LACI
- EpfuLano
- EPFU
- LANO



Ecological Inventory & Monitoring



Date, Time, & Weather
11 August 09
Sunset 8:03 PM

	Time (PM)	Temp (°F)	Relative Humidity	Wind Speed
START	9:25	66.2°	100%	0.0 m/s
END	10:45	64.4°	100%	0.0 m/s

Surveyor: Giblin Route Distance: 4.3 km
Notes: 2 bat species encountered