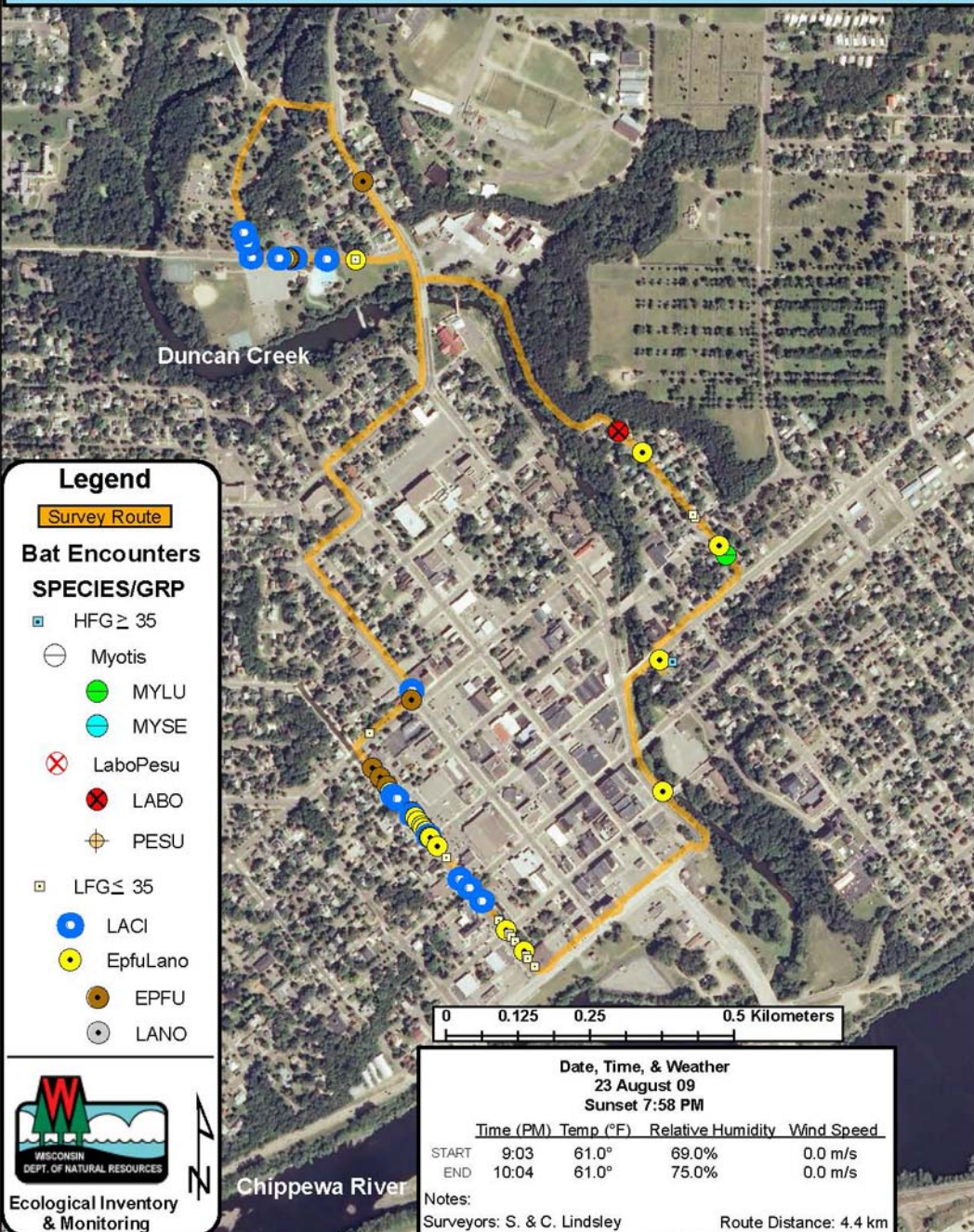


Chippewa County: Chippewa Falls [Duncan Creek] (RT 404)



Legend

Survey Route

Bat Encounters

SPECIES/GRP

▣ HFG ≥ 35

⊖ Myotis

● MYLU

● MYSE

⊗ LaboPesu

⊗ LABO

⊕ PESU

▣ LFG ≤ 35

● LACI

● EpfuLano

● EPFU

● LANO

0 0.125 0.25 0.5 Kilometers

Date, Time, & Weather

23 August 09

Sunset 7:58 PM

	Time (PM)	Temp (°F)	Relative Humidity	Wind Speed
START	9:03	61.0°	69.0%	0.0 m/s
END	10:04	61.0°	75.0%	0.0 m/s

Notes:

Surveyors: S. & C. Lindsley

Route Distance: 4.4 km



Ecological Inventory & Monitoring



Chippewa River