

# Columbia County: City of Portage (RT 408)


**Legend**

**Survey Route**

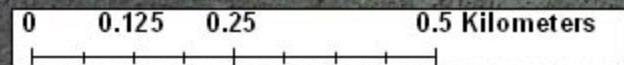
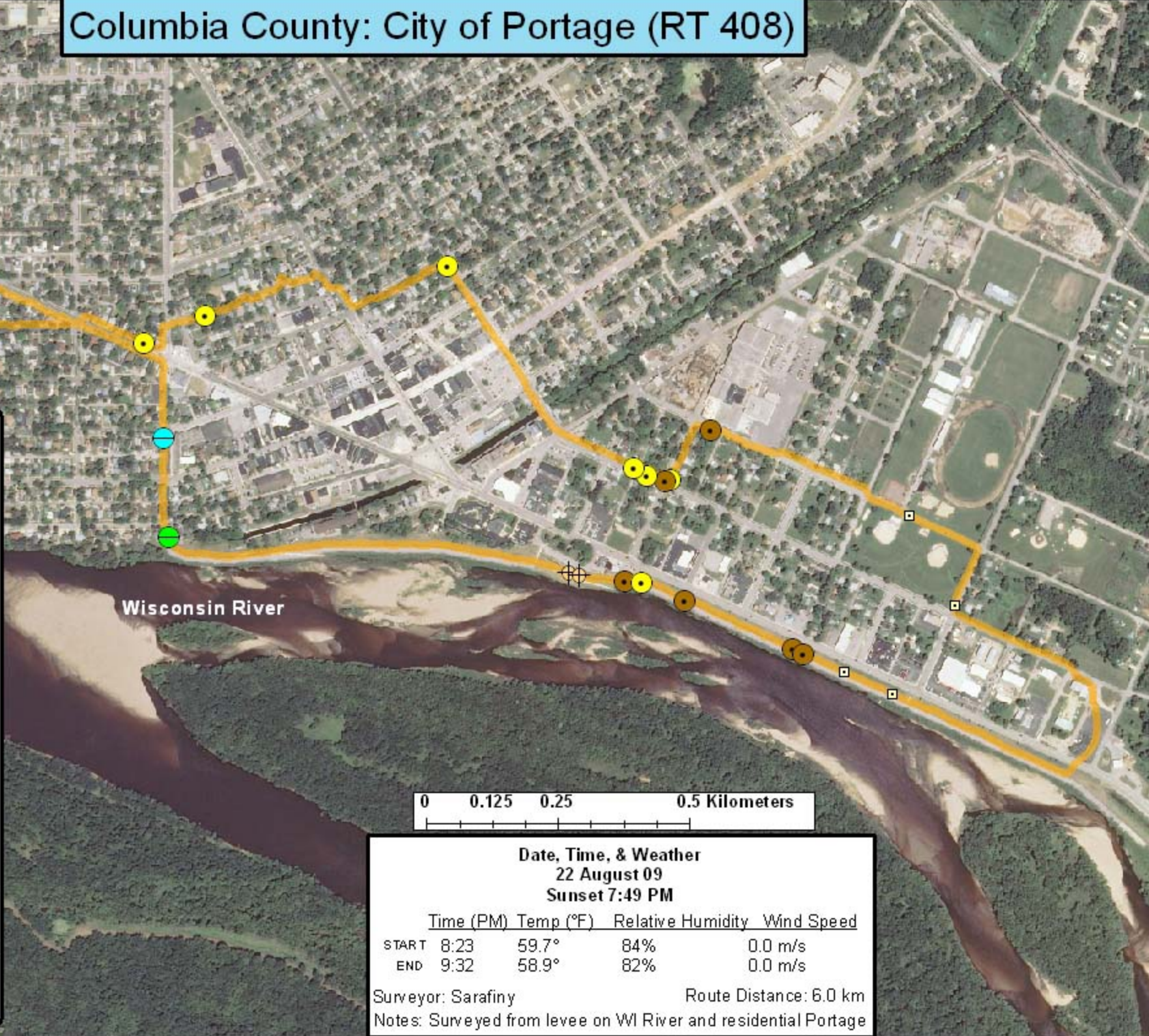
**Bat Encounters**

**SPECIES/GRP**

- HFG ≥ 35
- Myotis
- MYLU
- MYSE
- ⊗ LaboPesu
- LABO
- ⊕ PESU
- LFG ≤ 35
- LACI
- EpfuLano
- EPFU
- LANO



**Ecological Inventory & Monitoring**



**Date, Time, & Weather**  
**22 August 09**  
**Sunset 7:49 PM**

	Time (PM)	Temp (°F)	Relative Humidity	Wind Speed
START	8:23	59.7°	84%	0.0 m/s
END	9:32	58.9°	82%	0.0 m/s

Surveyor: Sarafiny      Route Distance: 6.0 km  
 Notes: Surveyed from levee on WI River and residential Portage