

# Columbia County: Harvey/Wangsness Wetland (RT 421)

**Legend**

Water Route  
Land Route

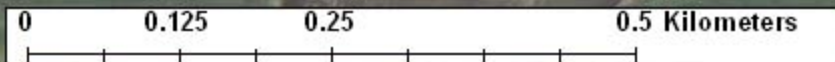
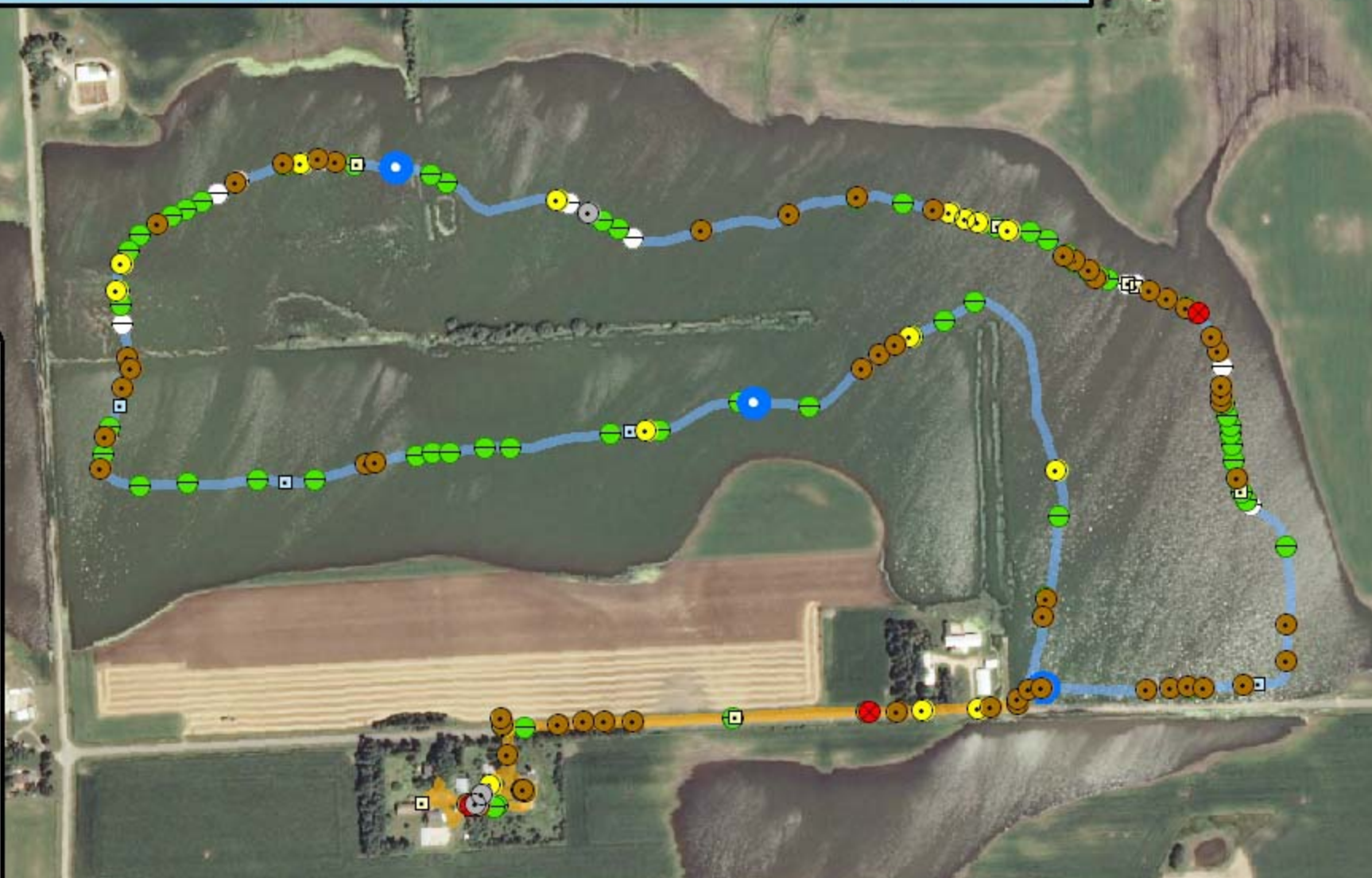
**Bat Encounters**

**SPECIES/GRP**

- HFG ≥ 35
- ⊖ Myotis
- MYLU
- MYSE
- ⊗ LaboPesu
- LABO
- ⊕ PESU
- LFG ≤ 35
- LACI
- EpfuLano
- EPFU
- LANO



**Ecological Inventory & Monitoring**



**Date, Time, & Weather**  
05 September 09  
Sunset 7:24 PM

	Time (PM)	Temp (°F)	Relative Humidity	Wind Speed
START	8:35	60.1°	78%	0.0 m/s
END	9:50	59.0°	87%	0.0 m/s

Surveyors: M. & J. McGinley  
Route Distance: 1.6 km (Land) +3.5 km (Water)= 5.1 km  
Notes: canoed wetland and walked back to farm, 5 bat species encountered