

# Racine County: Colonial Park [Racine] (RT 442)

**Legend**

**Survey Route**

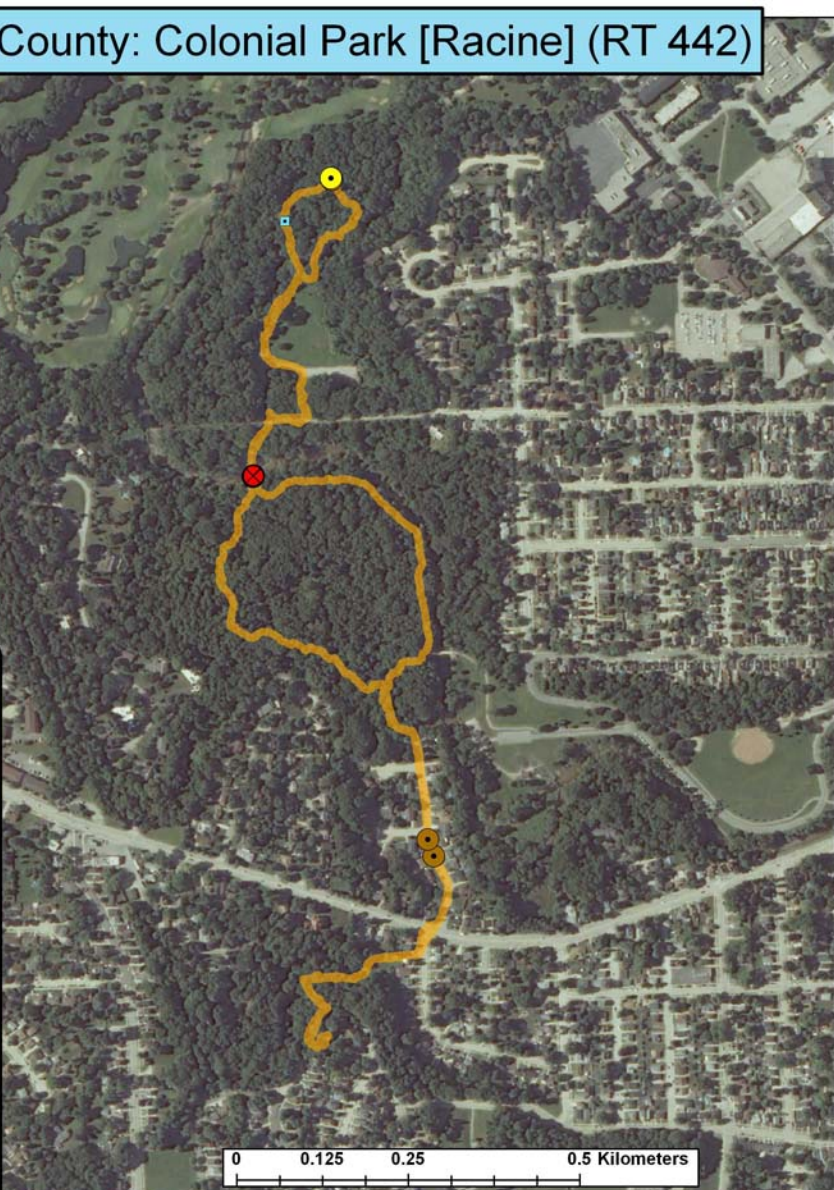
**Bat Encounters**

**SPECIES/GRP**

- HFG ≥ 35
- ⊖ Myotis
- MYLU
- MYSE
- ⊗ LaboPesu
- LABO
- ⊕ PESU
- LFG ≤ 35
- LACI
- EpfuLano
- EPFU
- LANO



Ecological Inventory & Monitoring



**Date, Time, & Weather**  
**22 September 09**  
**Sunset 6:48 PM**

|       | Time (PM) | Temp (°F) | Relative Humidity | Wind Speed |
|-------|-----------|-----------|-------------------|------------|
| START | 7:18      | 70.9°     | 88%               | 0.0 m/s    |
| END   | 8:30      | 68.9°     | 88%               | 0.0 m/s    |

Surveyor: Hamisko  
 Route Distance: 3.8 km  
 Notes: