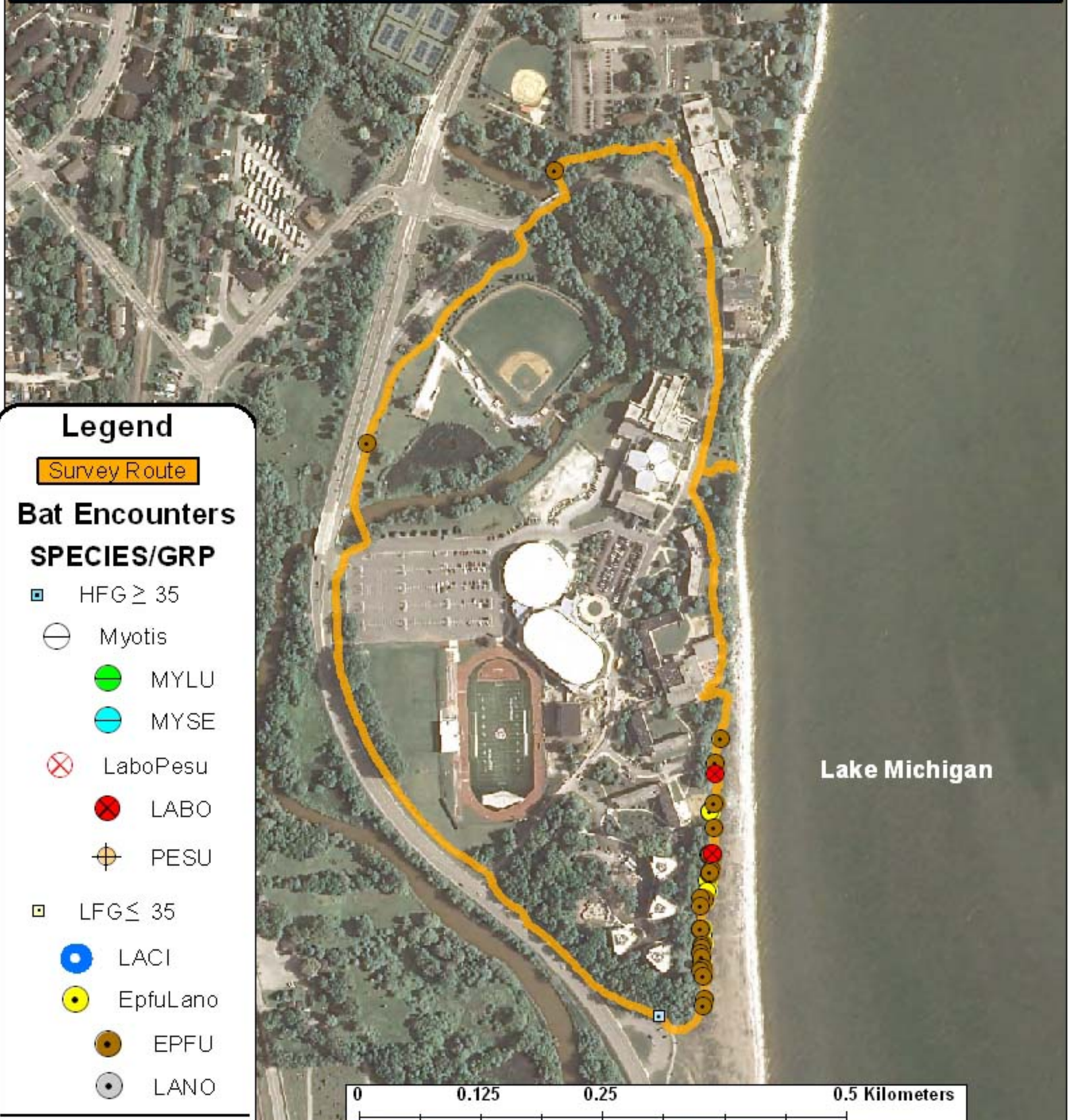


Kenosha County: Carthage College Campus (RT 450)



Legend

Survey Route

Bat Encounters

SPECIES/GRP

▣ HFG ≥ 35

⊖ Myotis

● MYLU

● MYSE

⊗ LaboPesu

● LABO

⊕ PESU

▣ LFG ≤ 35

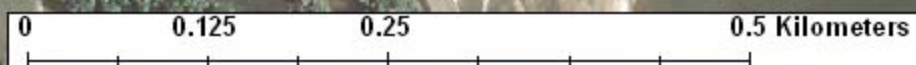
● LACI

● EpfuLano

● EPFU

● LANO

Lake Michigan



Ecological Inventory & Monitoring



Date, Time, & Weather

22 September 09

Sunset 6:50 PM

	Time (PM)	Temp (°F)	Relative Humidity	Wind Speed
START	7:20	69.1°	85.0%	0.0 m/s
END	8:30	66.9°	90.0%	0.0 m/s

Surveyors: Byrnes, Hellyer, Solorio, Quebbemann, Moyta

Notes: 2 bat species found

Route Distance: 2.3 km