

# Racine County: Colonial Park [Racine] (RT 472)

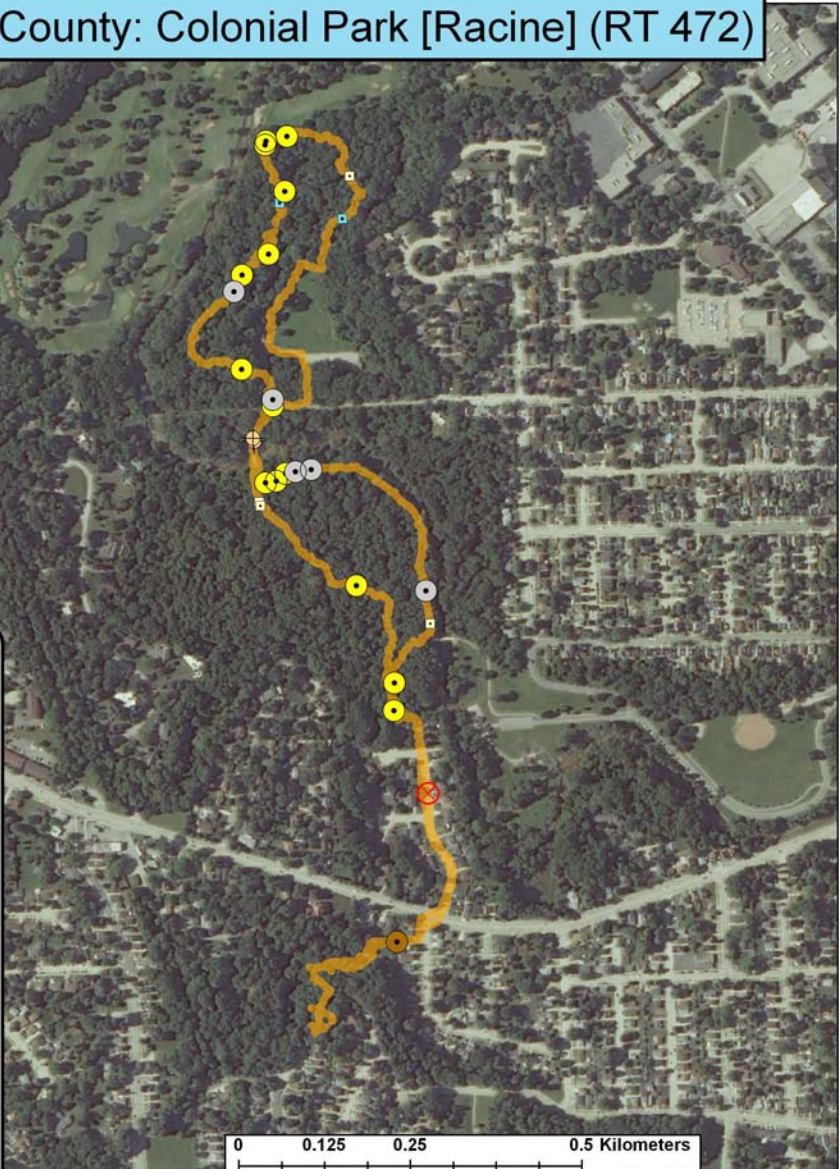
**Legend**

**Survey Route**

**Bat Encounters**

**SPECIES/GRP**

- HFG ≥ 35
- ⊖ Myotis
- MYLU
- MYSE
- ⊗ LaboPesu
- LABO
- ⊕ PESU
- LFG ≤ 35
- LACI
- EpfuLano
- EPFU
- LANO



Ecological Inventory & Monitoring

**Date, Time, & Weather**  
26 June 09  
Sunset 8:23 PM

	Time (PM)	Temp (°F)	Relative Humidity	Wind Speed
START	9:03	70.0°	64%	2.2 m/s
END	10:10	69.0°	63%	0.0 m/s

Surveyor: Hamisko      Route Distance: 3.6 km  
Notes: