

Acoustic Bat Encounters

Survey Route

SPECIES/GROUP

High Frequency ≥ 35 kHz

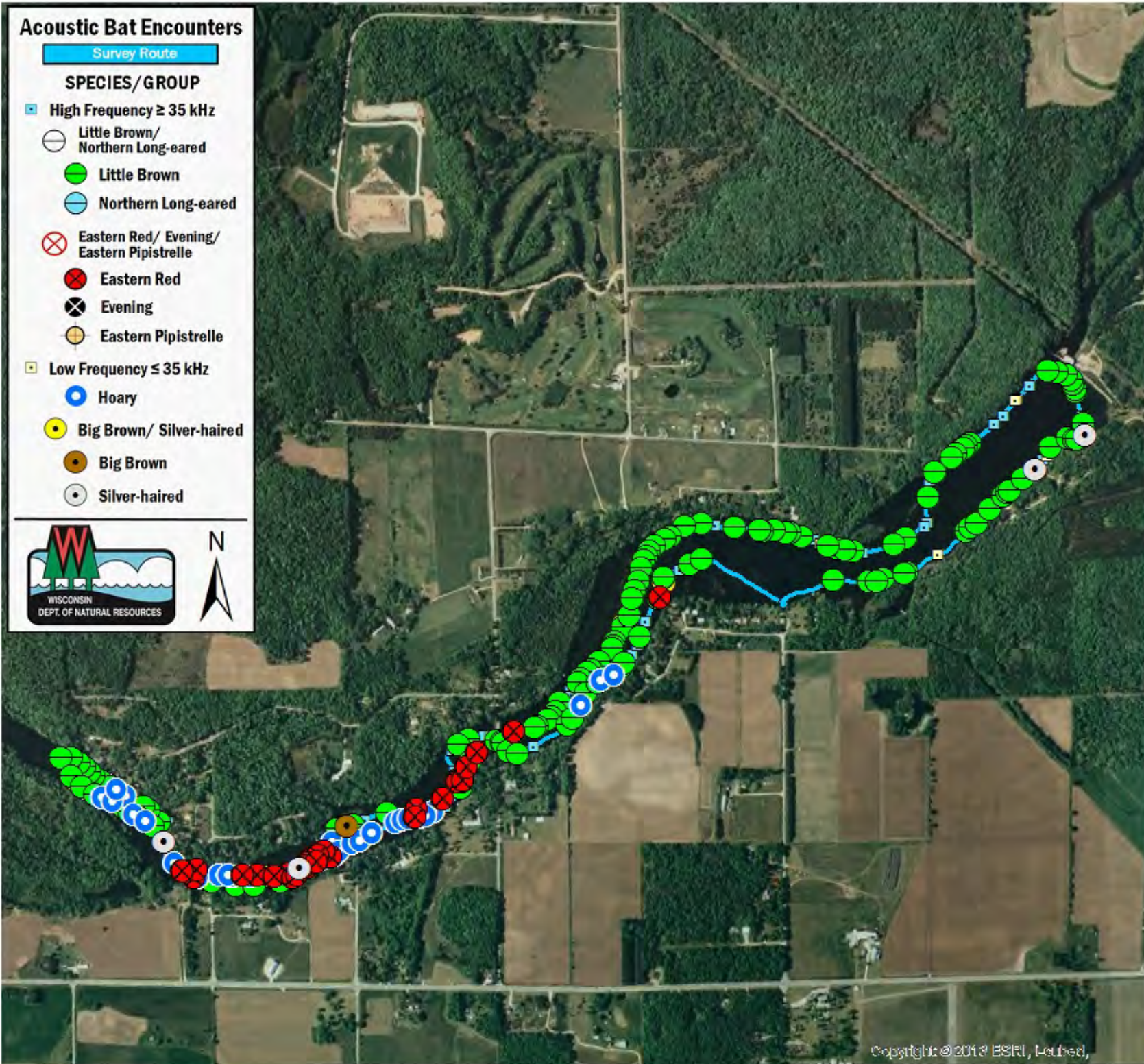
- Little Brown/
Northern Long-eared
- Little Brown
- Northern Long-eared

Eastern Red/ Evening/
Eastern Pipistrelle

- Eastern Red
- Evening
- Eastern Pipistrelle

Low Frequency ≤ 35 kHz

- Hoary
- Big Brown/ Silver-haired
- Big Brown
- Silver-haired



SURVEY RESULTS

Marinette County
Sandstone Flowage
28 July 2010
RT 1003

Surveyors: R Novy & D Romback
Route Length: 7.91 km
5 Species Encountered
190.36 Passes/Detector Hr

Time & Weather

Time (PM)

9:12 11:02

Temperature (F)

69.8 62.6

Relative Humidity (%)

60.0 77.0

Wind (m/s)

2.1 1.5

Notes: BATLAS Rt.
Survey completed
counter-clockwise.



0 0.15 0.3 0.45
km