

## Acoustic Bat Encounters

Survey Route

### SPECIES/GROUP

High Frequency  $\geq 35$  kHz

Little Brown/  
Northern Long-eared

Little Brown

Northern Long-eared

Eastern Red/ Pipistrelle

Eastern Red

Eastern Pipistrelle

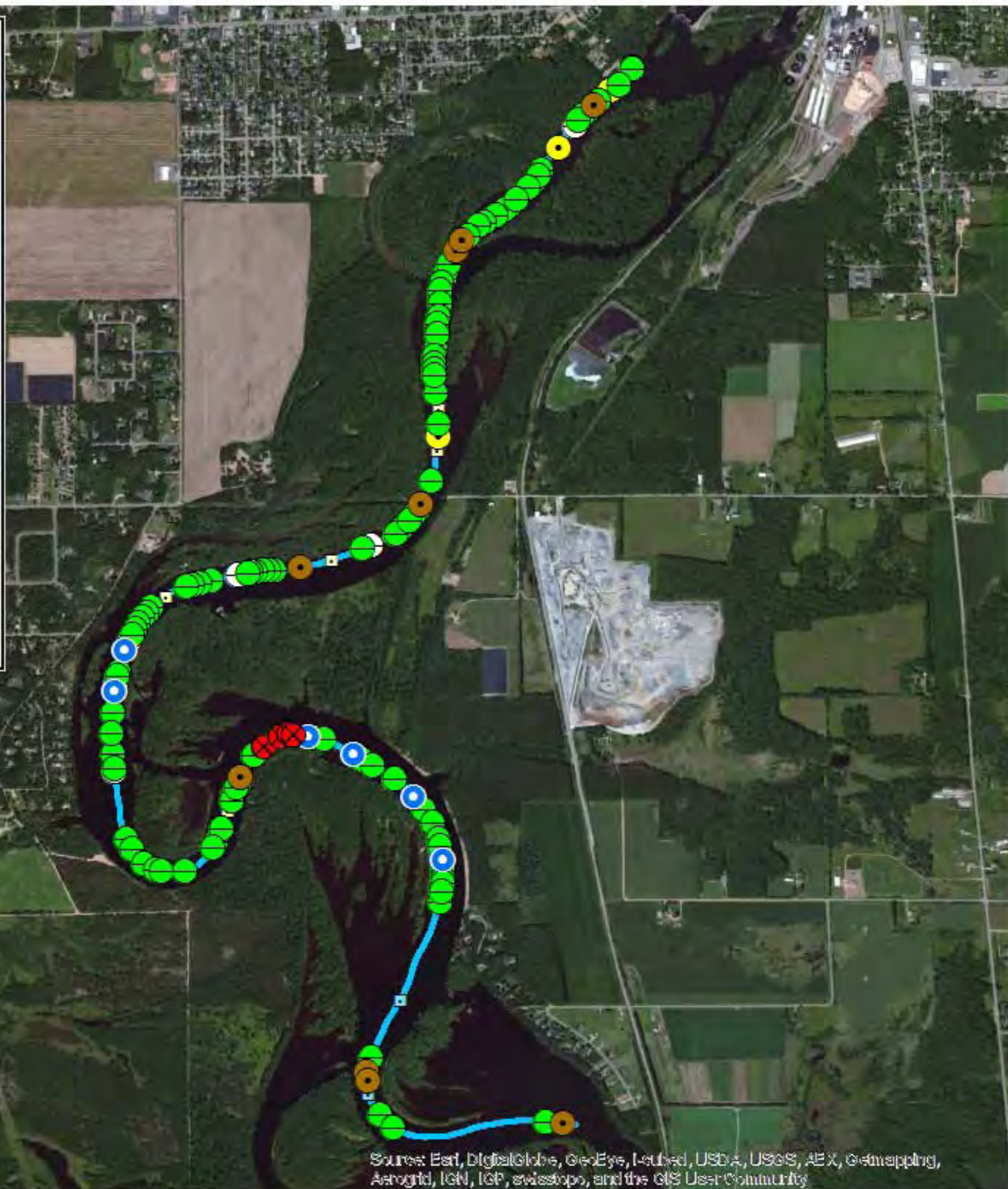
Low Frequency  $\leq 35$  kHz

Hoary

Big Brown/ Silver-haired

Big Brown

Silver-haired



## SURVEY RESULTS

Marathon County

Wisconsin River 4-4

28 July 2010

RT 1021

Surveyors: M Keenan &  
A & B Sadler

Route Length: 8.03 km

4 Species Encountered

### Time & Weather

Time (PM)

9:04      10:30

Temperature (F)

69.8      65.3

Relative Humidity (%)

68.0      80.0

Wind (m/s)

2.6      1.5

Notes: BATLAS Rt  
Surveyed North to South



0   0.25   0.5   0.75  
km

Source: Esri, DigitalGlobe, GeoEye, Earthstar, USDA, USGS, AeroGRID, IGN, IGP, swisstopo, and the GIS User Community