



SURVEY RESULTS

St. Croix County
Pine Lake
29 July 2010
RT 1022

Surveyors: A Frank, A Badje,
G Emerson

Route Length: 7.92 km
5 Species Encountered

91.2 Passes/Detector Hr

Time & Weather

Time (PM)

9:12 11:17

Temperature (F)

68.0 65.3

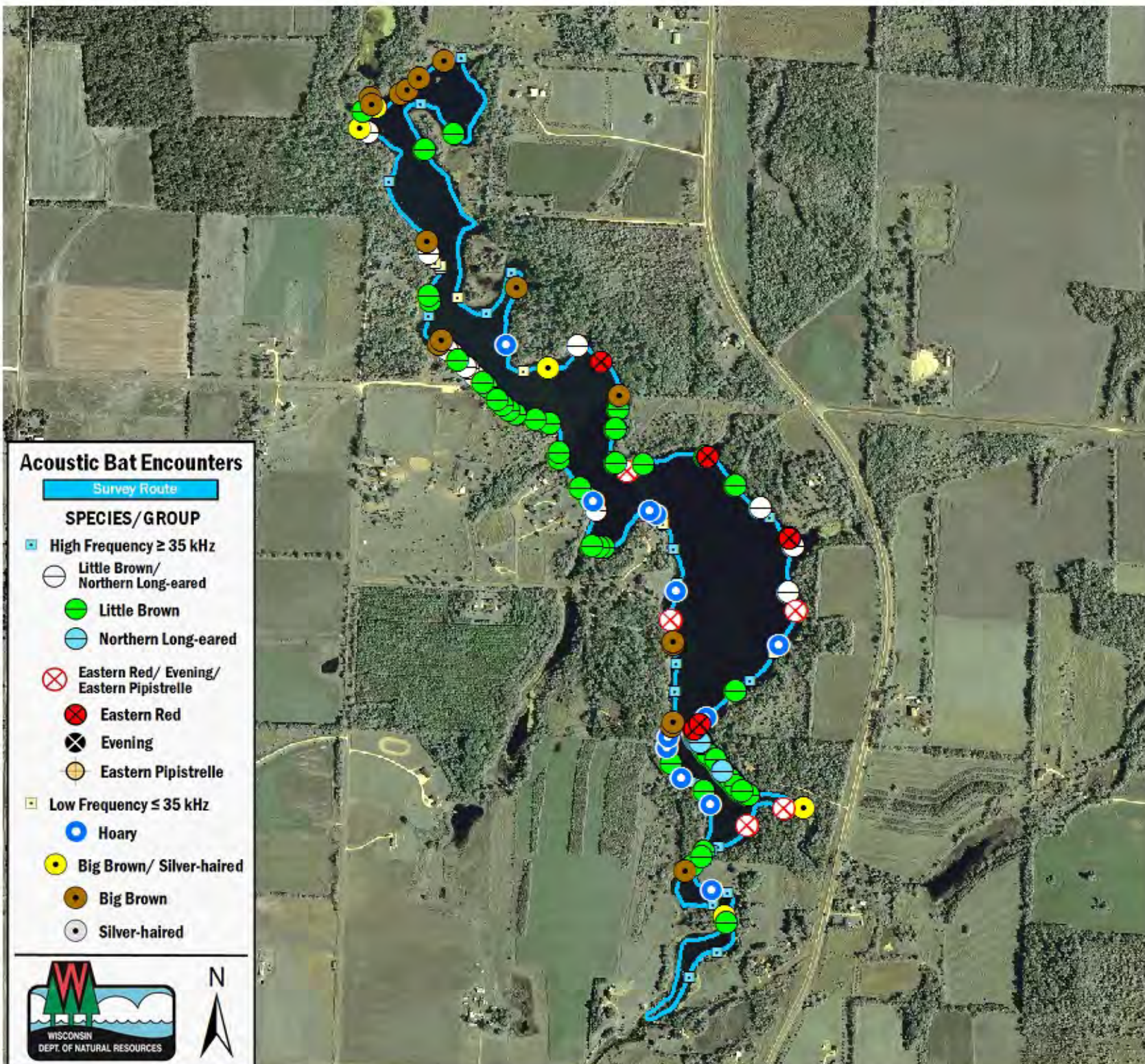
Relative Humidity (%)

88.0 89.0

Wind (m/s)

2.1 0.0

Notes: BATLAS Rt.
Survey completed clockwise.



Acoustic Bat Encounters

Survey Route

SPECIES/GROUP

- ▣ High Frequency ≥ 35 kHz
 - Little Brown/
Northern Long-eared
 - Little Brown
 - Northern Long-eared
 - ⊗ Eastern Red/ Evening/
Eastern Pipistrelle
 - ⊗ Eastern Red
 - ⊗ Evening
 - ⊗ Eastern Pipistrelle
- ▣ Low Frequency ≤ 35 kHz
 - Hoary
 - Big Brown/ Silver-haired
 - Big Brown
 - Silver-haired

