



## SURVEY RESULTS

Florence County

Pine River 6-1

29 July 2010

RT 1027

Surveyors: R & C Novy

Route Length: 9.38 km

4 Species Encountered

110.56 Passes/Detector Hr

### Time & Weather

Time (PM)

8:49      10:18

Temperature (F)

68.0      63.0

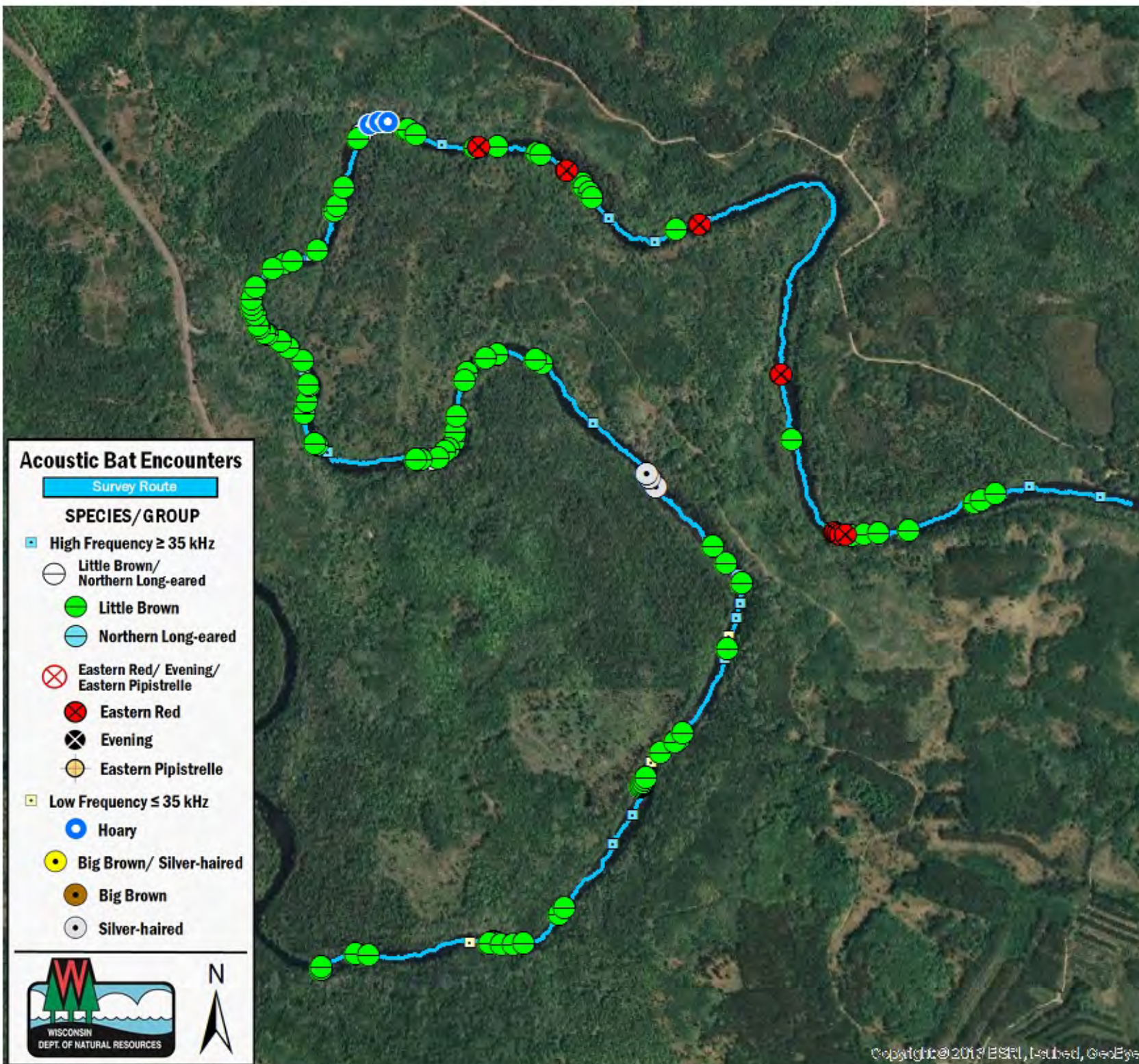
Relative Humidity (%)

68.0      84.0

Wind (m/s)

1.5      0.0

Notes: BATLAS Rt.  
Survey completed W to E.



### Acoustic Bat Encounters

Survey Route

#### SPECIES/GROUP

High Frequency  $\geq 35$  kHz

Little Brown/  
Northern Long-eared

Little Brown

Northern Long-eared

Eastern Red/ Evening/  
Eastern Pipistrelle

Eastern Red

Evening

Eastern Pipistrelle

Low Frequency  $\leq 35$  kHz

Hoary

Big Brown/ Silver-haired

Big Brown

Silver-haired



0 0.15 0.3 0.45  
km