

Acoustic Bat Encounters

Survey Route

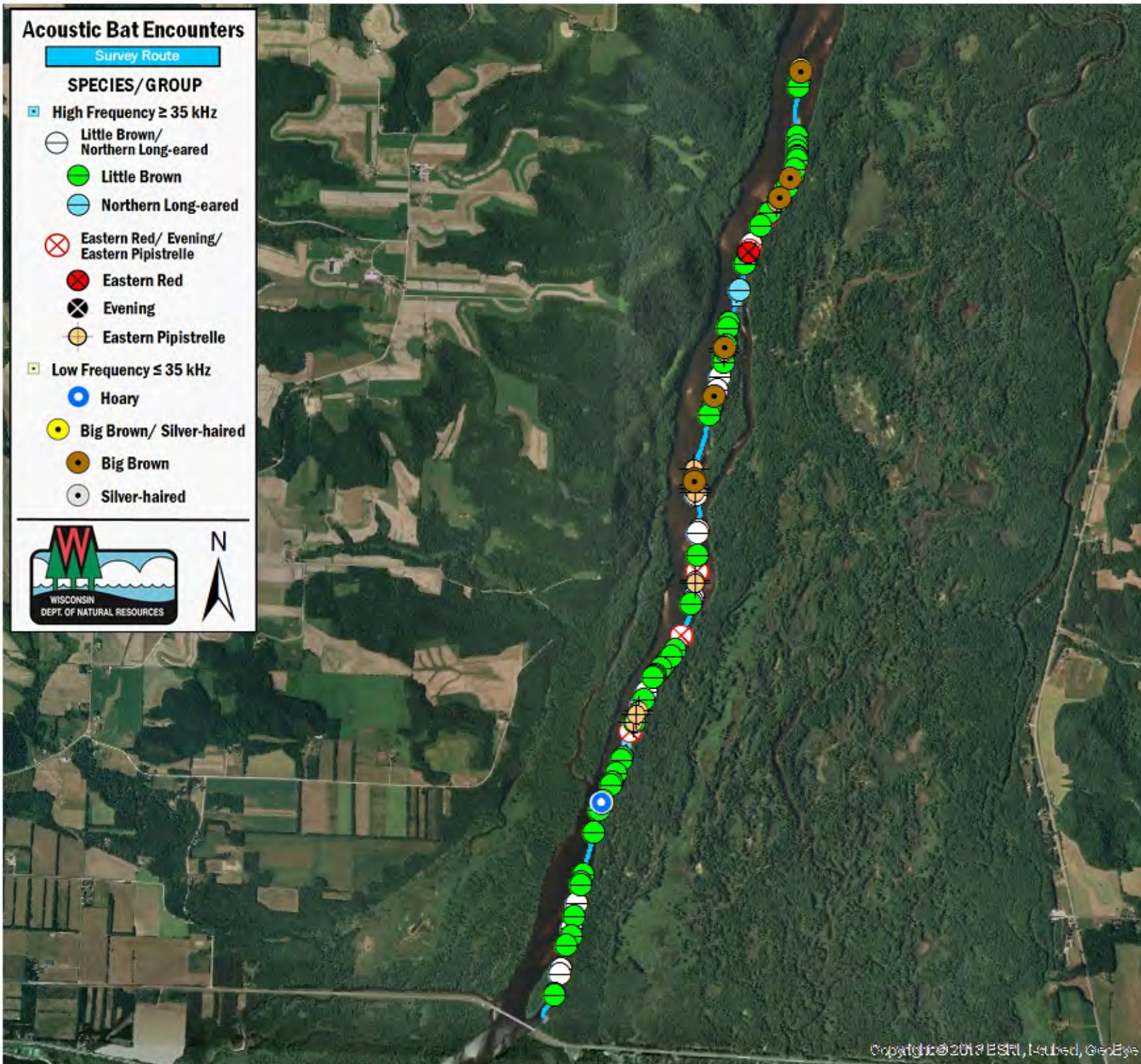
SPECIES/GROUP

High Frequency ≥ 35 kHz

- Little Brown/
Northern Long-eared
- Little Brown
- Northern Long-eared
- ⊗ Eastern Red/ Evening/
Eastern Pipistrelle
- Eastern Red
- ⊗ Evening
- Eastern Pipistrelle

Low Frequency ≤ 35 kHz

- Hoary
- Big Brown/ Silver-haired
- Big Brown
- Silver-haired



SURVEY RESULTS

Buffalo/Pepin County
Chippewa River 7
30 July 2010
RT 1028

Surveyors: J White & T Brandt
Route Length: 7.48 km
6 Species Encountered
126.18 Passes/Detector Hr

Time & Weather

Time (PM)	
9:16	10:24
Temperature (F)	
71.6	69.8
Relative Humidity (%)	
83.0	88.0
Wind (m/s)	
2.1	1.6
Notes: BATLAS Rt. Survey completed N to S.	

