

# Acoustic Bat Encounters

Survey Route

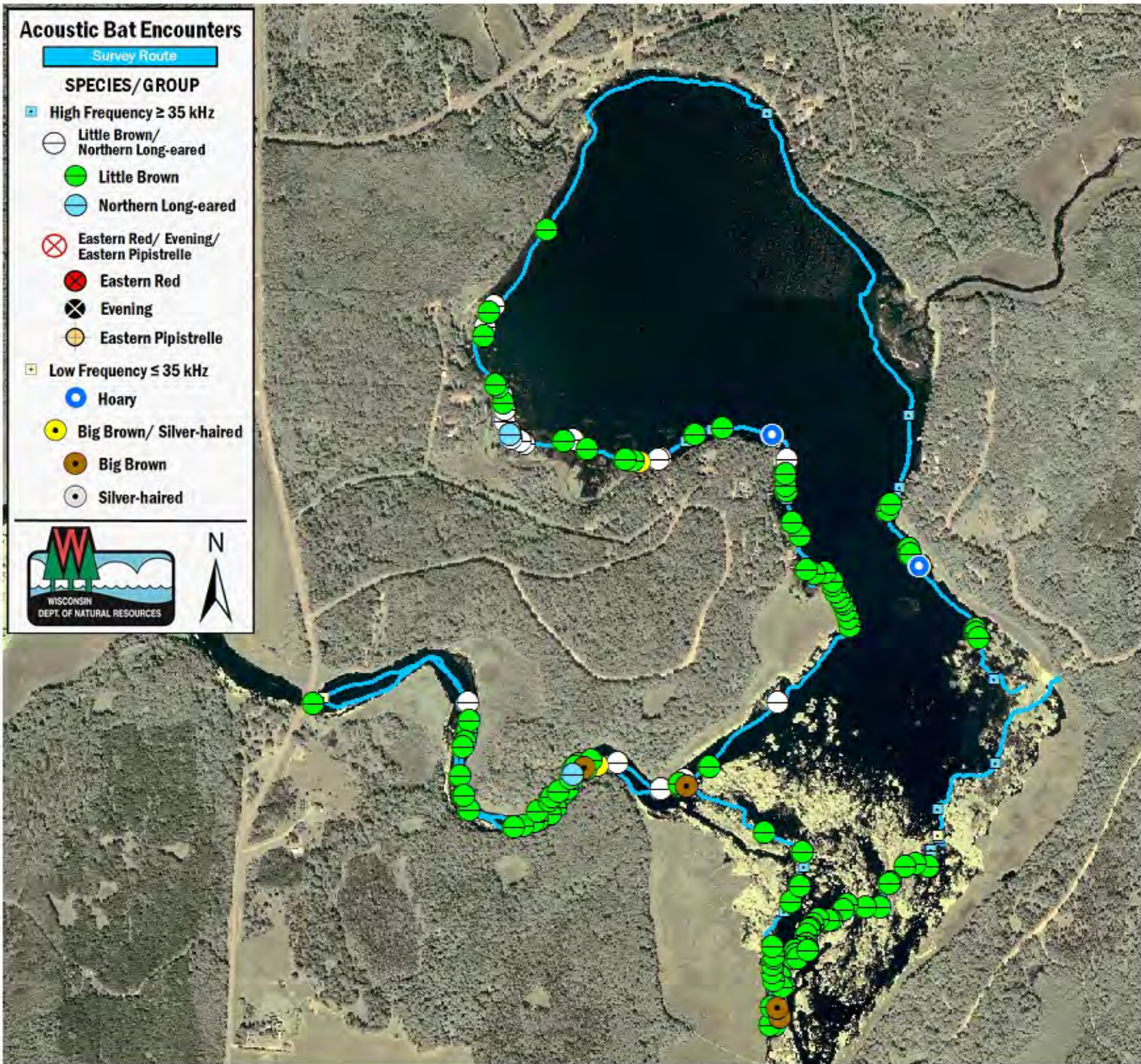
## SPECIES/GROUP

### High Frequency $\geq 35$ kHz

- Little Brown/  
Northern Long-eared
- Little Brown
- Northern Long-eared
- ⊗ Eastern Red/ Evening/  
Eastern Pipistrelle
- Eastern Red
- ⊗ Evening
- Eastern Pipistrelle

### Low Frequency $\leq 35$ kHz

- Hoary
- Big Brown/ Silver-haired
- Big Brown
- Silver-haired



## SURVEY RESULTS

Burnett County

Rice Lake

30 July 2010

RT 1031

Surveyors: S McIntyre & J Klemish

Route Length: 8.95 km

4 Species Encountered

82.46 Passes/Detector Hr

### Time & Weather

Time (PM)

9:17      12:08 AM

Temperature (F)

69.4      67.6

Relative Humidity (%)

83.0      87.0

Wind (m/s)

1.5      2.6

Notes: BATLAS Rt.

Survey completed clockwise.

