




Acoustic Bat Encounters

Survey Route

SPECIES/GROUP

High Frequency ≥ 35 kHz

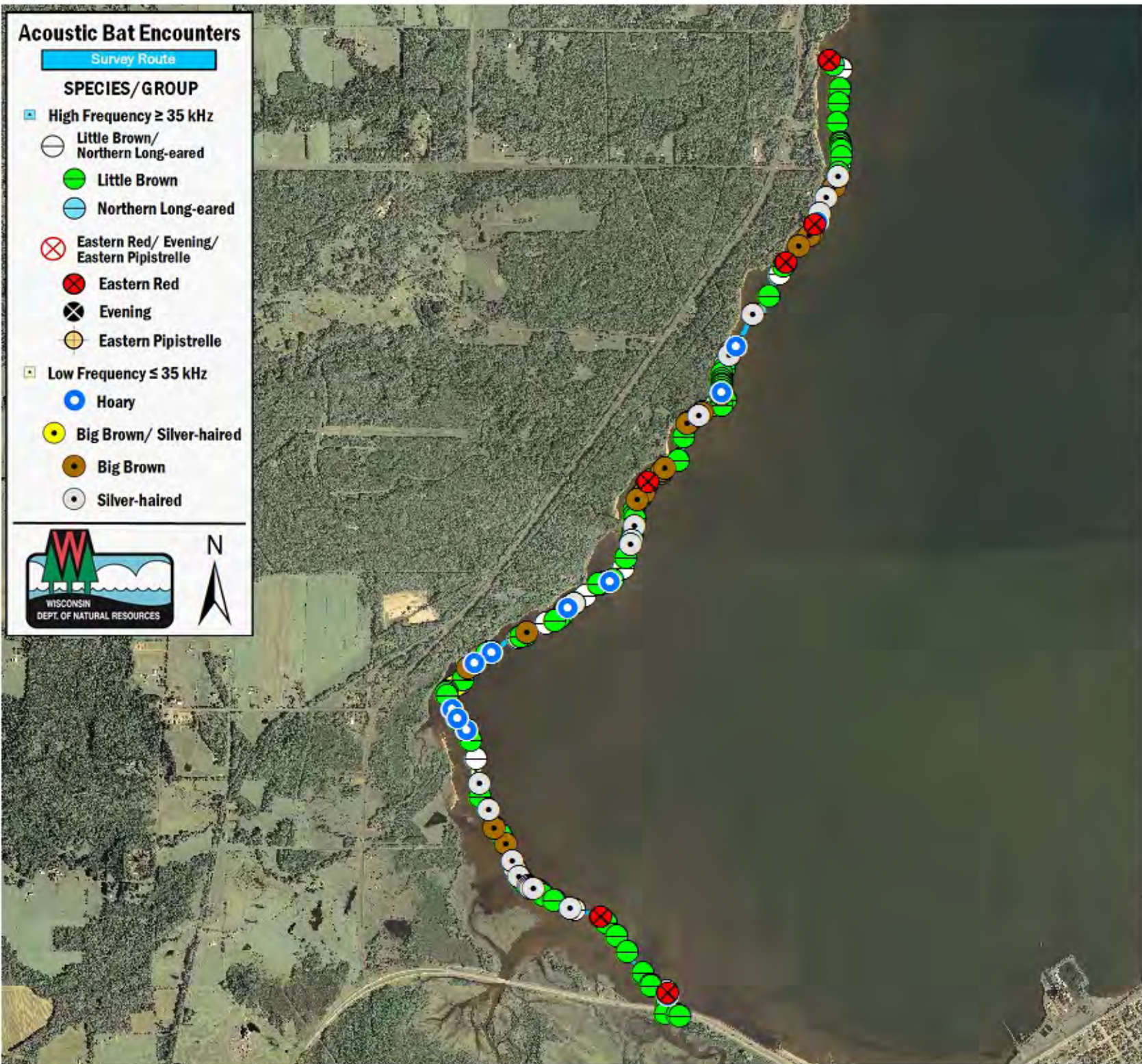
-  Little Brown/
Northern Long-eared
-  Little Brown
-  Northern Long-eared

Eastern Red/ Evening/ Eastern Pipistrelle

-  Eastern Red
-  Evening
-  Eastern Pipistrelle

Low Frequency ≤ 35 kHz

-  Hoary
-  Big Brown/ Silver-haired
-  Big Brown
-  Silver-haired



SURVEY RESULTS

Bayfield County

Lake Superior - Washburn

29 July 2010

RT 1047

Surveyors: R Brady & D Lindsey

Route Length: 7.6 km

5 Species Encountered

142.0 Passes/Detector Hr

Time & Weather

Time (PM)

9:32 11:32

Temperature (F)

61.0 57.9

Relative Humidity (%)

93.0 97.0

Wind (m/s)

3.5 0.0

Notes: BATLAS Rt.
Survey completed N to S.

