

Acoustic Bat Encounters

Survey Route

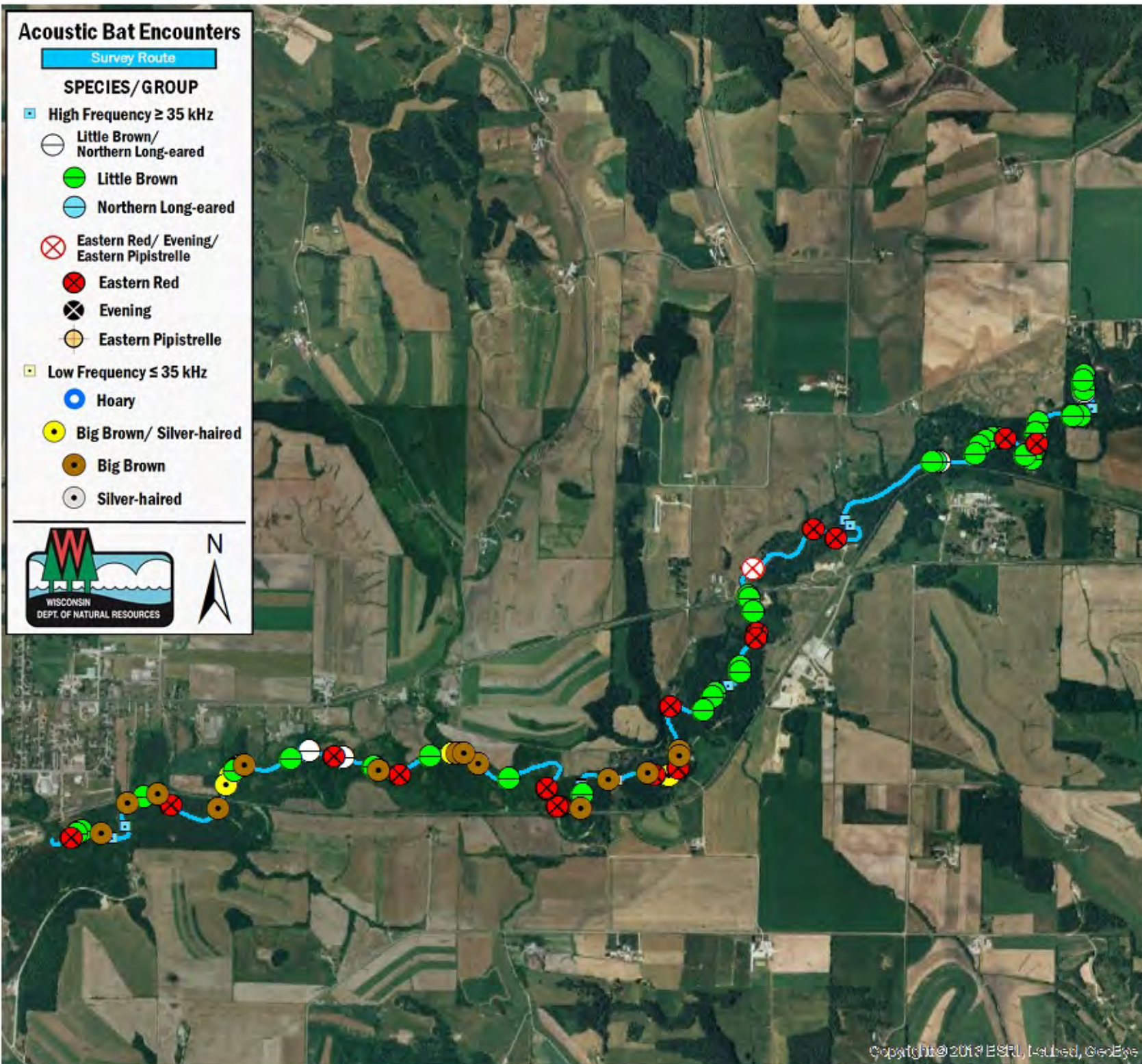
SPECIES/GROUP

High Frequency ≥ 35 kHz

- Little Brown/
Northern Long-eared
- Little Brown
- Northern Long-eared
- ⊗ Eastern Red/ Evening/
Eastern Pipistrelle
- Eastern Red
- ⊗ Evening
- Eastern Pipistrelle

Low Frequency ≤ 35 kHz

- Hoary
- Big Brown/ Silver-haired
- Big Brown
- Silver-haired



SURVEY RESULTS

Trempealeau County
Trempealeau River 1
31 July 2010
RT 1050

Surveyors: P White & T Brandt
Route Length: 8.94 km
3 Species Encountered
90.0 Passes/ Detector Hr

Time & Weather

Time (PM)	
9:12	10:32
Temperature (F)	
71.6	68.0
Relative Humidity (%)	
78.0	88.0
Wind (m/s)	
0.0	0.0

Notes: BATLAS Rt.
Survey completed E to W.

