




Acoustic Bat Encounters



Survey Route

SPECIES/GROUP



High Frequency ≥ 35 kHz

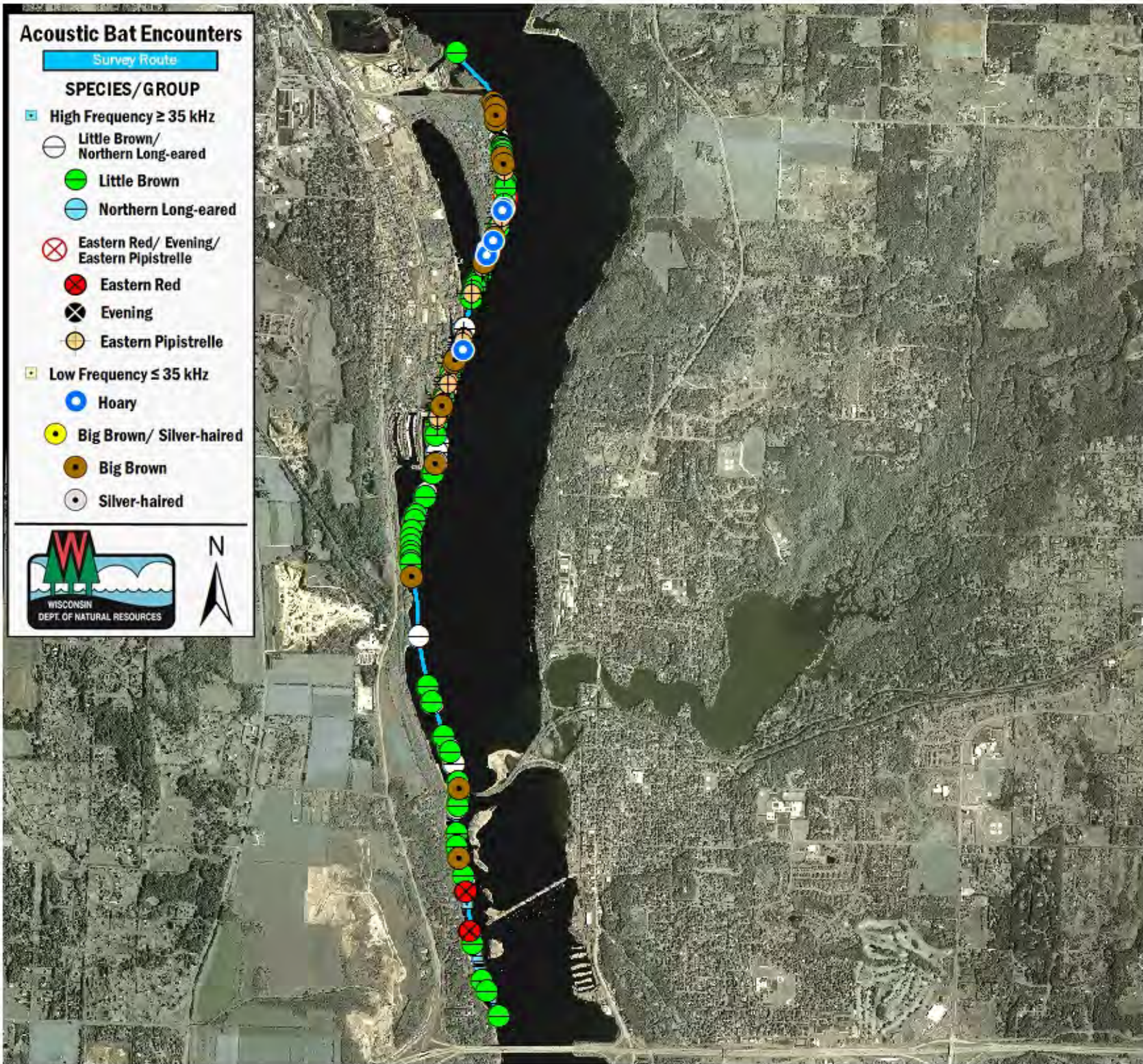
-  Little Brown/
Northern Long-eared
-  Little Brown
-  Northern Long-eared

Eastern Red/ Evening/ Eastern Pipistrelle

-  Eastern Red
-  Evening
-  Eastern Pipistrelle

Low Frequency ≤ 35 kHz

-  Hoary
-  Big Brown/ Silver-haired
-  Big Brown
-  Silver-haired



SURVEY RESULTS

St. Croix County
St. Croix River 16-4
31 July 2010
RT 1055

Surveyors: G Emerson & J Pechacek

Route Length: 7.94 km
5 Species Encountered
145.36 Passes/Detector Hr

Time & Weather

Time (PM)	
9:16	10:53
Temperature (F)	
69.8	68.0
Relative Humidity (%)	
88.0	88.0
Wind (m/s)	
0.0	0.0

Notes: BATLAS Rt.
Survey completed N to S.



0 0.5 1 1.5 km