



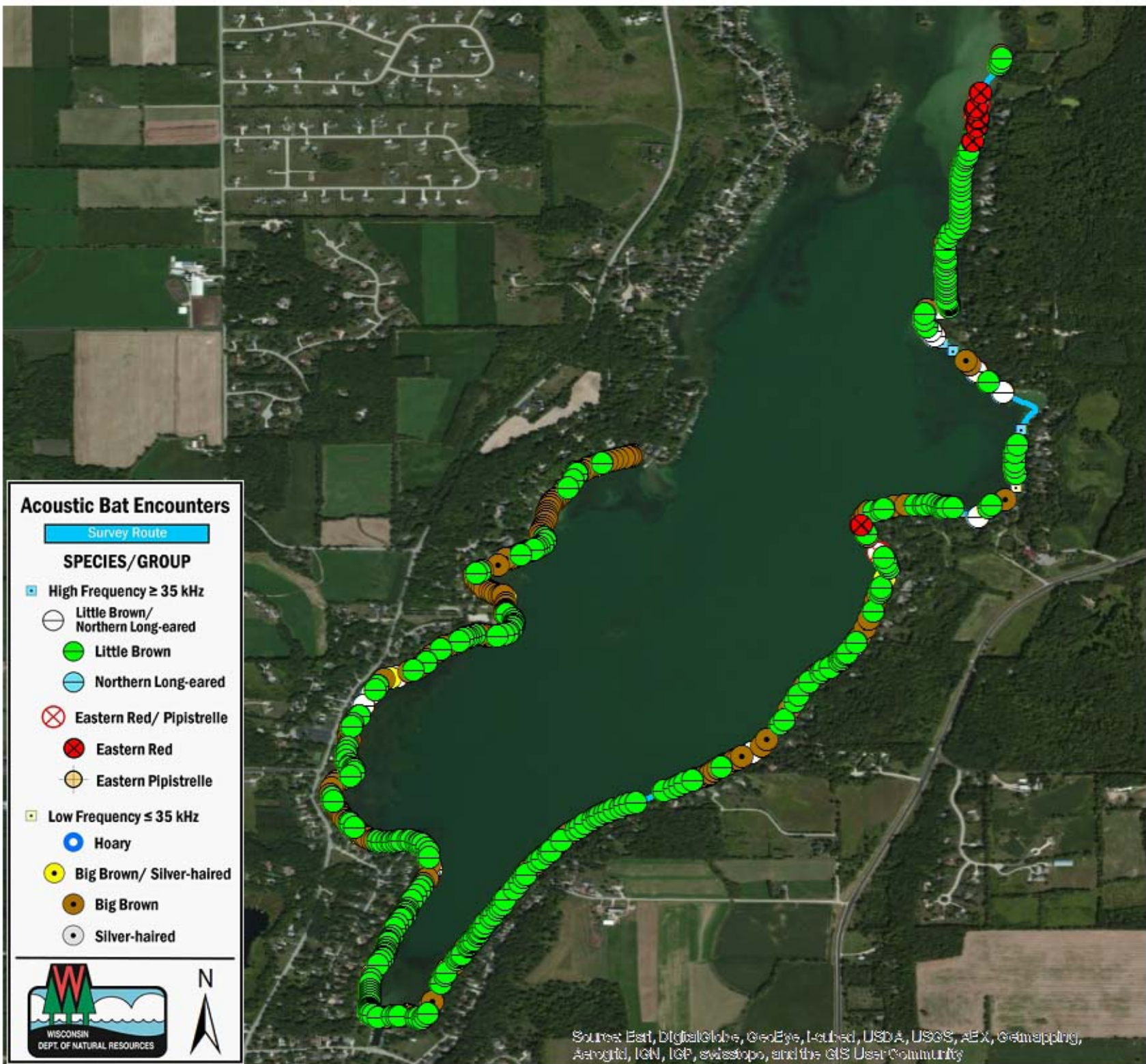
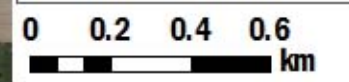
SURVEY RESULTS

Washington County
 Big Cedar Lake
 31 July 2010
 RT 1058
 Surveyors: M & L Keenan
 Route Length: 7.64 km
 3 Species Encountered

Time & Weather

Time (PM)	
9:12	12:05AM
Temperature (F)	
66.2	70.0
Relative Humidity (%)	
92.0	83.0
Wind (m/s)	
0.0	1.5

Notes: BATLAS Survey. Route completed counter-clockwise. MYLU overlaps much of EPFU.



Acoustic Bat Encounters

- Survey Route**
- SPECIES/GROUP**
- High Frequency ≥ 35 kHz
 - Little Brown/ Northern Long-eared
 - Little Brown
 - Northern Long-eared
 - ⊗ Eastern Red/ Pipistrelle
 - Eastern Red
 - Eastern Pipistrelle
 - Low Frequency ≤ 35 kHz
 - Hoary
 - Big Brown/ Silver-haired
 - Big Brown
 - Silver-haired



Source: Esri, DigitalGlobe, GeoEye, Earthstar, USDA, USGS, AeroGRID, IGN, IGP, swisstopo, and the GIS User Community