



SURVEY RESULTS

Bayfield/Douglas County
 Lake Superior - Brule Point
 31 July 2010
 RT 1062

Surveyors: J Klemish & S McIntyre
 Route Length: 11.96 km
 4 Species Encountered
 84.43 Passes/ Detector Hr

Time & Weather

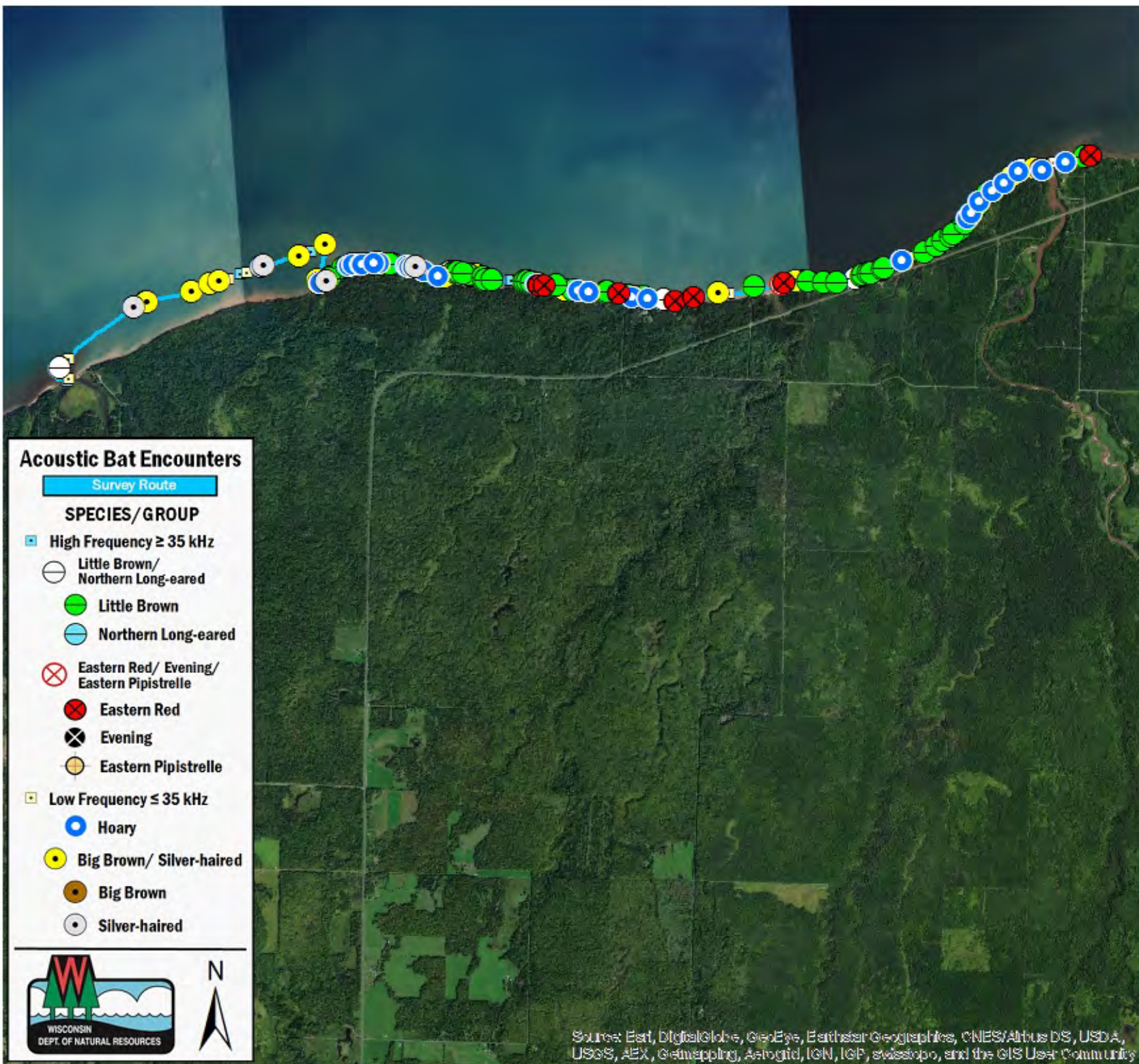
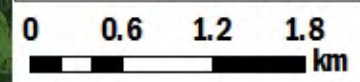
Time (PM)
 9:25 12:12 AM

Temperature (F)
 62.1 59.0

Relative Humidity (%)
 100.0 100.0

Wind (m/s)
 0.0 0.0

Notes: BATLAS Rt.
 Survey completed W to E.
 Began 3.7 km W of starting point.



Acoustic Bat Encounters

- Survey Route**
- SPECIES/GROUP**
- ▣ High Frequency ≥ 35 kHz
 - Little Brown/
Northern Long-eared
 - Little Brown
 - Northern Long-eared
 - ⊗ Eastern Red/ Evening/
Eastern Pipistrelle
 - Eastern Red
 - ⊗ Evening
 - Eastern Pipistrelle
 - ▣ Low Frequency ≤ 35 kHz
 - Hoary
 - Big Brown/ Silver-haired
 - Big Brown
 - Silver-haired



Source: Esri, DigitalGlobe, GeoEye, Earthstar Geographics, CNES/Airbus DS, USDA, USGS, AEX, Geomatics, AeroGRID, IGN, IGP, swisstopo, and the GIS User Community