

Racine County: Colonial Park (RT1066)


Legend

Survey Route

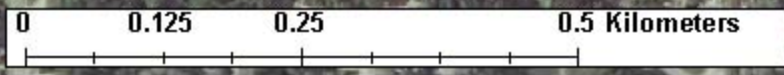
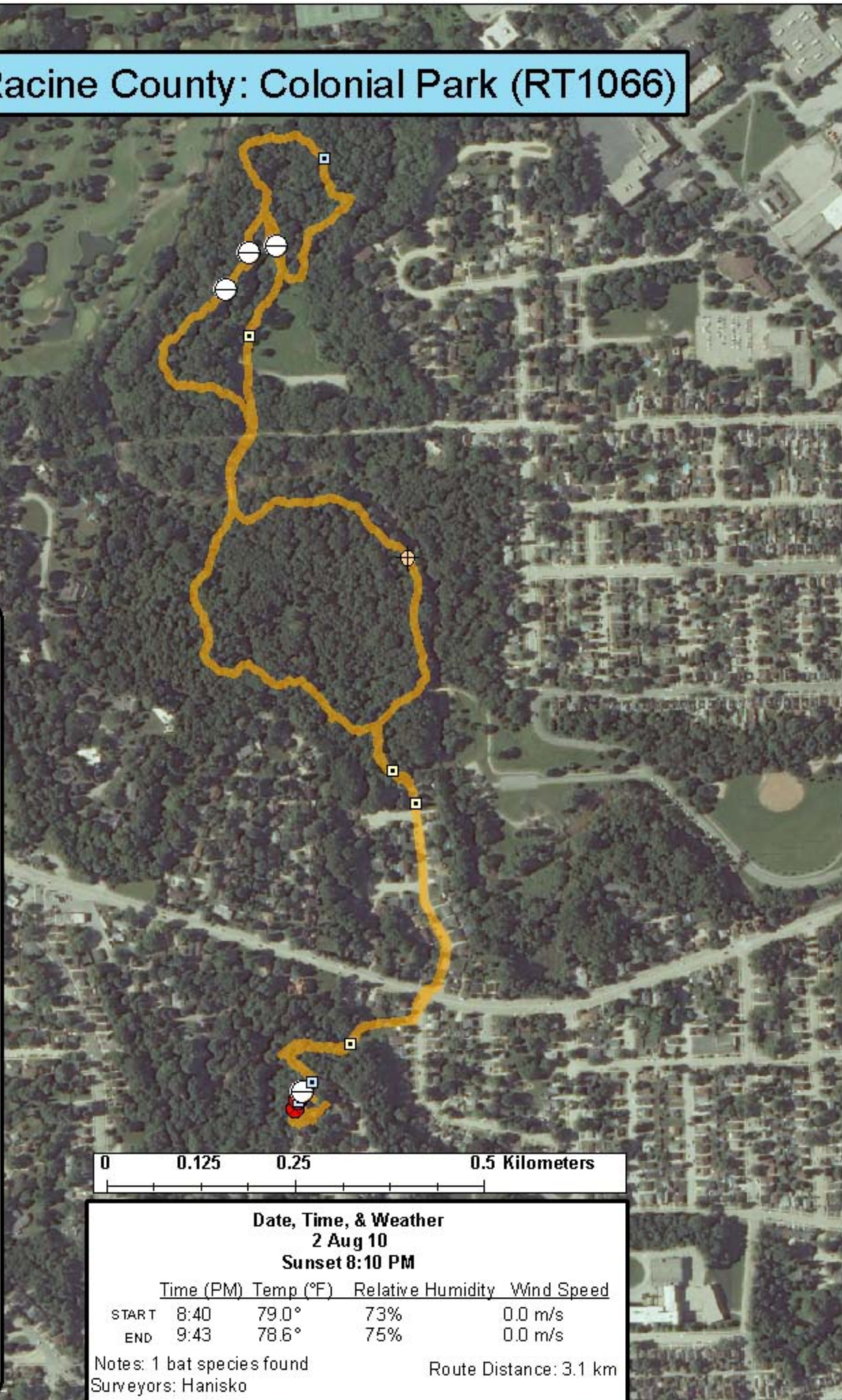
Bat Encounters

SPECIES/GRP

- ▣ HFG ≥ 35
- ⊖ Myotis
- MYLU
- MYSE
- ⊗ LaboPesu
- ⊗ LABO
- ⊕ PESU
- ▣ LFG ≤ 35
- LACI
- EpfuLano
- EPFU
- LANO



Ecological Inventory & Monitoring



Date, Time, & Weather
2 Aug 10
Sunset 8:10 PM

	Time (PM)	Temp (°F)	Relative Humidity	Wind Speed
START	8:40	79.0°	73%	0.0 m/s
END	9:43	78.6°	75%	0.0 m/s

Notes: 1 bat species found
 Surveyors: Hanisko

Route Distance: 3.1 km